

Product datasheet for **TA501384M**

XPNPEP1 Mouse Monoclonal Antibody [Clone ID: OTI1E7]

Product data:

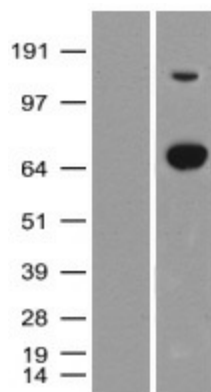
Product Type:	Primary Antibodies
Clone Name:	OTI1E7
Applications:	IF, IHC, WB
Recommended Dilution:	WB 1:2000, IF 1:100, IHC: 1:150
Reactivity:	Human, Mouse, Rat
Host:	Mouse
Isotype:	IgG1
Clonality:	Monoclonal
Immunogen:	Full length human recombinant protein of human XPNPEP1 (NP_065116) produced in HEK293T cell.
Formulation:	PBS (pH 7.3) containing 1% BSA, 50% glycerol and 0.02% sodium azide.
Concentration:	0.58 mg/ml
Purification:	Purified from mouse ascites fluids or tissue culture supernatant by affinity chromatography (protein A/G)
Conjugation:	Unconjugated
Storage:	Store at -20°C as received.
Stability:	Stable for 12 months from date of receipt.
Predicted Protein Size:	74.6 kDa
Gene Name:	X-prolyl aminopeptidase 1
Database Link:	NP_065116 Entrez Gene 170750 Mouse Entrez Gene 170751 Rat Entrez Gene 7511 Human Q9NQW7
Background:	This gene encodes the cytosolic form of a metalloaminopeptidase that catalyzes the cleavage of the N-terminal amino acid adjacent to a proline residue. The gene product may play a role in degradation and maturation of tachykinins, neuropeptides, and peptide hormones. Alternative splicing results in multiple transcript variants.
Synonyms:	APP1; SAMP; XPNPEP; XPNPEPL; XPNPEPL1



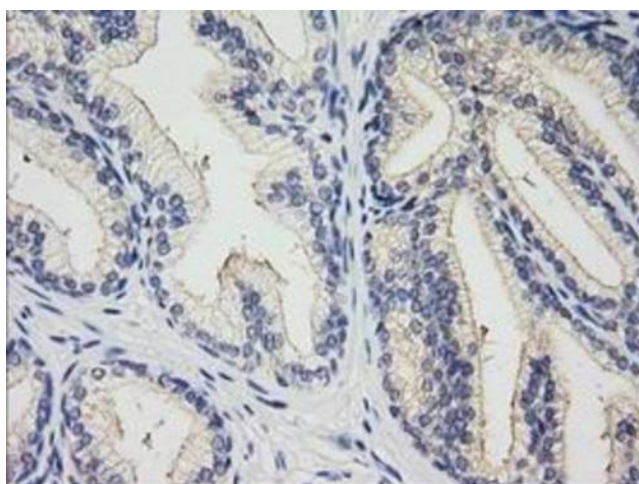
[View online »](#)

Protein Families: Druggable Genome, Protease

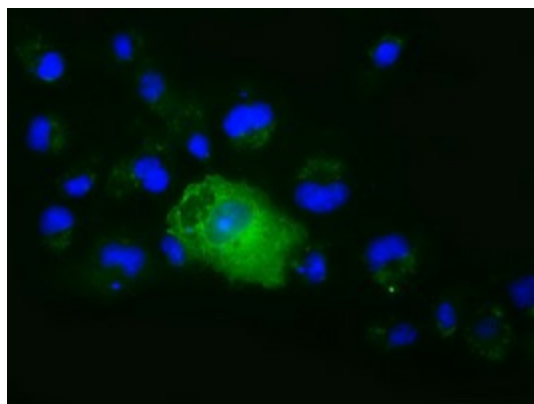
Product images:



HEK293T cells were transfected with the pCMV6-ENTRY control (Left lane) or pCMV6-ENTRY XPNPEP1 ([RC203535], Right lane) cDNA for 48 hrs and lysed. Equivalent amounts of cell lysates (5 ug per lane) were separated by SDS-PAGE and immunoblotted with anti-XPNPEP1. Positive lysates [LY402779] (100ug) and [LC402779] (20ug) can be purchased separately from OriGene.



Immunohistochemical staining of paraffin-embedded Human prostate tissue within the normal limits using anti-XPNPEP1 mouse monoclonal antibody. ([TA501384]). Heat-induced epitope retrieval by EDTA solution buffer pH 8.0 at 120°C for 3 min.



Anti-XPNPEP1 mouse monoclonal antibody ([TA501384]) immunofluorescent staining of COS7 cells transiently transfected by pCMV6-ENTRY XPNPEP1 ([RC203535]).