

## Product datasheet for **TA501384**

### XPNPEP1 Mouse Monoclonal Antibody [Clone ID: OTI1E7]

#### Product data:

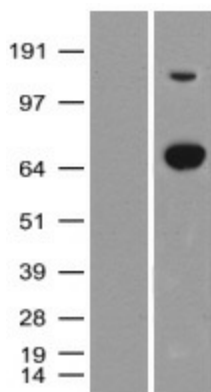
|                         |   |
|-------------------------|---|
| Product Type:           | Primary Antibodies  |
| Clone Name:             | OTI1E7  |
| Applications:           | IF, IHC, WB   |
| Recommended Dilution:   | WB 1:2000, IF 1:100, IHC: 1:150   |
| Reactivity:             | Human, Mouse, Rat   |
| Host:                   | Mouse   |
| Isotype:                | IgG1  |
| Clonality:              | Monoclonal  |
| Immunogen:              | Full length human recombinant protein of human XPNPEP1 (NP_065116) produced in HEK293T cell.  |
| Formulation:            | PBS (pH 7.3) containing 1% BSA, 50% glycerol and 0.02% sodium azide.  |
| Concentration:          | 0.58 mg/ml  |
| Purification:           | Purified from mouse ascites fluids or tissue culture supernatant by affinity chromatography (protein A/G)   |
| Conjugation:            | Unconjugated  |
| Storage:                | Store at -20°C as received.   |
| Stability:              | Stable for 12 months from date of receipt.  |
| Predicted Protein Size: | 74.6 kDa  |
| Gene Name:              | X-prolyl aminopeptidase 1   |
| Database Link:          | <a href="#">NP_065116</a><br><a href="#">Entrez Gene 170750 Mouse</a> <a href="#">Entrez Gene 170751 Rat</a> <a href="#">Entrez Gene 7511 Human</a><br><a href="#">Q9NQW7</a>   |
| Background:             | This gene encodes the cytosolic form of a metalloaminopeptidase that catalyzes the cleavage of the N-terminal amino acid adjacent to a proline residue. The gene product may play a role in degradation and maturation of tachykinins, neuropeptides, and peptide hormones. Alternative splicing results in multiple transcript variants. |
| Synonyms:               | APP1; SAMP; XPNPEP; XPNPEPL; XPNPEPL1   |



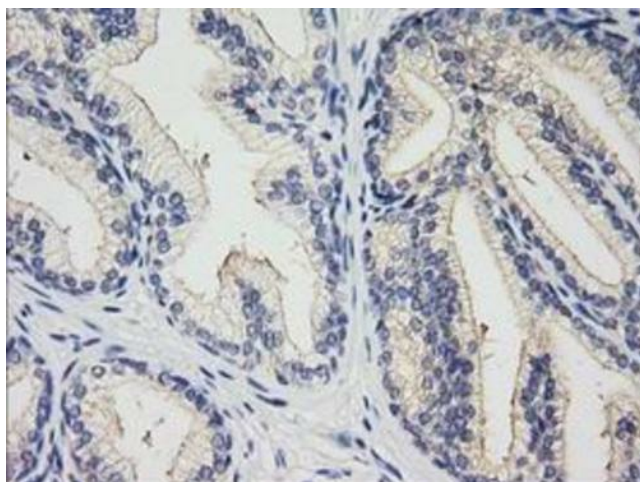
[View online »](#)

Protein Families: Druggable Genome, Protease

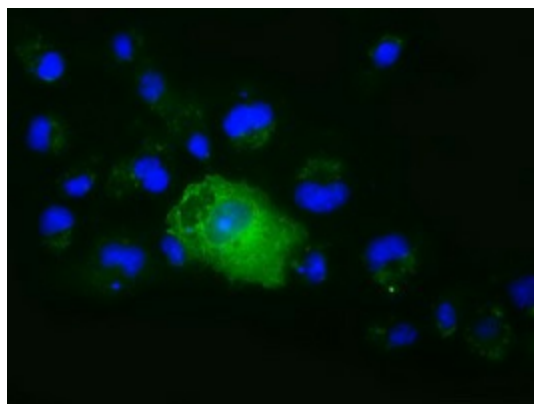
**Product images:**



HEK293T cells were transfected with the pCMV6-ENTRY control (Left lane) or pCMV6-ENTRY XPNPEP1 ([RC203535], Right lane) cDNA for 48 hrs and lysed. Equivalent amounts of cell lysates (5 ug per lane) were separated by SDS-PAGE and immunoblotted with anti-XPNPEP1. Positive lysates [LY402779] (100ug) and [LC402779] (20ug) can be purchased separately from OriGene.



Immunohistochemical staining of paraffin-embedded Human prostate tissue within the normal limits using anti-XPNPEP1 mouse monoclonal antibody. (TA501384). Heat-induced epitope retrieval by EDTA solution buffer pH 8.0 at 120°C for 3 min.



Anti-XPNPEP1 mouse monoclonal antibody (TA501384) immunofluorescent staining of COS7 cells transiently transfected by pCMV6-ENTRY XPNPEP1 ([RC203535]).