

## Product datasheet for **TA501383M**

### **XPNPEP1 Mouse Monoclonal Antibody [Clone ID: OTI1E3]**

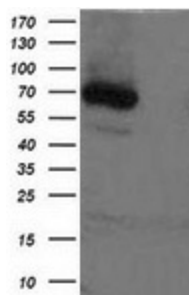
#### **Product data:**

Product Type:	Primary Antibodies
Clone Name:	OTI1E3
Applications:	IF, IHC, WB
Recommended Dilution:	WB: 1:200 - 1:1000, IHC 1:150, IF 1:100
Reactivity:	Human, Mouse, Rat
Host:	Mouse
Isotype:	IgG1
Clonality:	Monoclonal
Immunogen:	Full length human recombinant protein of human XPNPEP1 (NP_065116) produced in HEK293T cell.
Formulation:	PBS (pH 7.3) containing 1% BSA, 50% glycerol and 0.02% sodium azide.
Concentration:	1 mg/ml
Purification:	Purified from mouse ascites fluids or tissue culture supernatant by affinity chromatography (protein A/G)
Conjugation:	Unconjugated
Storage:	Store at -20°C as received.
Stability:	Stable for 12 months from date of receipt.
Predicted Protein Size:	74.6 kDa
Gene Name:	X-prolyl aminopeptidase 1
Database Link:	<a href="#">NP_065116</a> <a href="#">Entrez Gene 170750 Mouse</a> <a href="#">Entrez Gene 170751 Rat</a> <a href="#">Entrez Gene 7511 Human</a> <a href="#">Q9NQW7</a>
Background:	This gene encodes the cytosolic form of a metalloaminopeptidase that catalyzes the cleavage of the N-terminal amino acid adjacent to a proline residue. The gene product may play a role in degradation and maturation of tachykinins, neuropeptides, and peptide hormones. Alternative splicing results in multiple transcript variants.
Synonyms:	APP1; SAMP; XPNPEP; XPNPEPL; XPNPEPL1

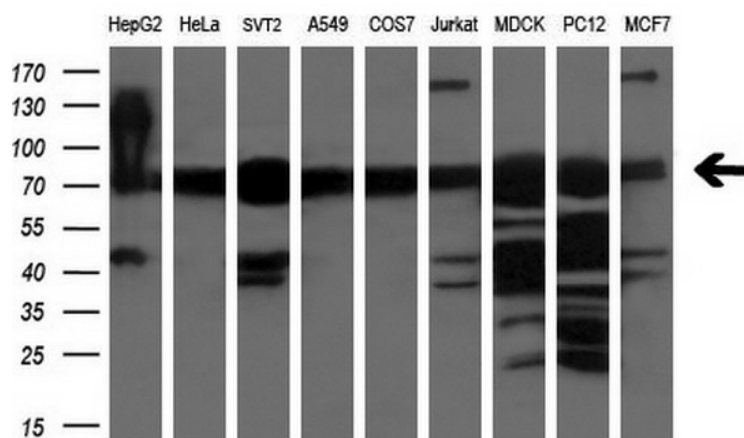

[View online »](#)

Protein Families: Druggable Genome, Protease

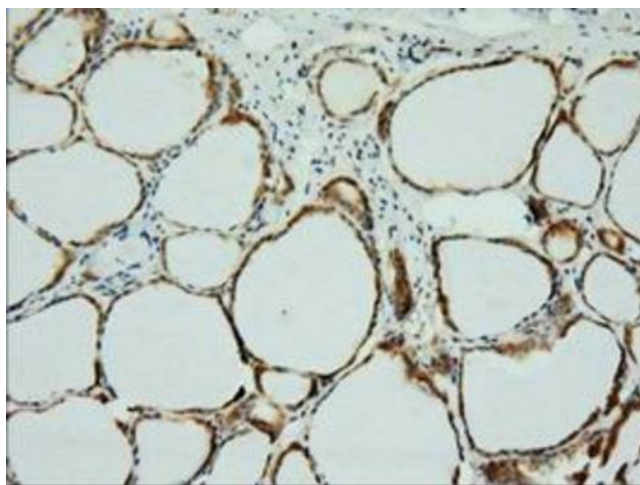
## Product images:



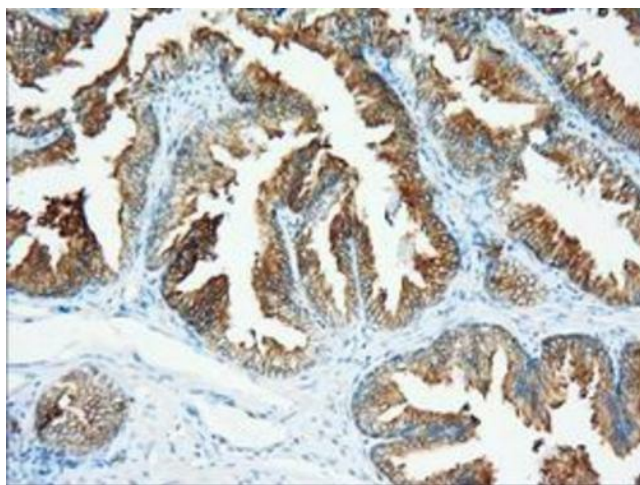
HEK293T cells were transfected with pCMV6-ENTRY XPNPEP1 (Cat# [RC203535], Left lane) or the pCMV6-ENTRY control (Cat# [PS100001], Right lane) cDNA for 48 hrs and lysed. Equivalent amounts of cell lysates (5 ug per lane) were separated by SDS-PAGE and immunoblotted with anti-XPNPEP1 (Cat# [TA501383]).



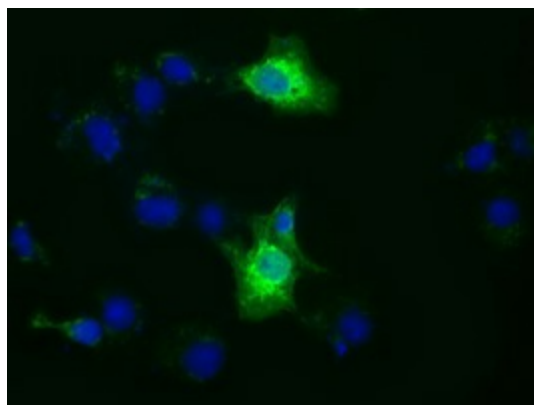
Western blot analysis of extracts (35ug) from 9 different cell lines by using anti-XPNPEP1 monoclonal antibody (HepG2: human; HeLa: human; SVT2: mouse; A549: human; COS7: monkey; Jurkat: human; MDCK: canine; PC12: rat; MCF7: human) (1:200).



Immunohistochemical staining of paraffin-embedded Human thyroid tissue within the normal limits using anti-XPNPEP1 mouse monoclonal antibody. Heat-induced epitope retrieval by EDTA solution buffer pH 8.0 at 120°C for 3 min.



Immunohistochemical staining of paraffin-embedded Human prostate tissue within the normal limits using anti-XPNPEP1 mouse monoclonal antibody. Heat-induced epitope retrieval by EDTA solution buffer pH 8.0 at 120°C for 3 min.



Anti-XPNPEP1 mouse monoclonal antibody ([TA501383]) immunofluorescent staining of COS7 cells transiently transfected by pCMV6-ENTRY XPNPEP1 ([RC203535]).