

Product datasheet for **TA501377**

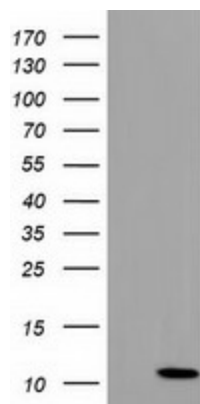
COX6B2 Mouse Monoclonal Antibody [Clone ID: OTI1F5]

Product data:

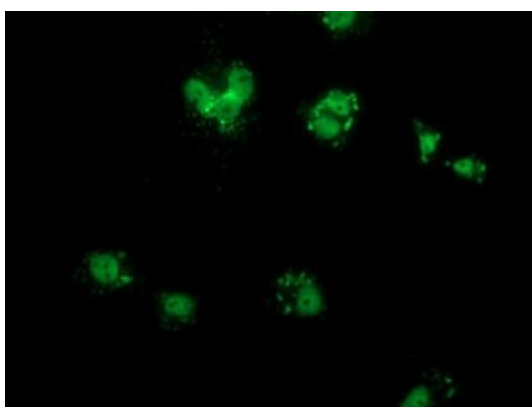
| | |
|-------------------------|---|
| Product Type: | Primary Antibodies |
| Clone Name: | OTI1F5 |
| Applications: | IF, WB |
| Recommended Dilution: | WB 1:500, IF 1:100 |
| Reactivity: | Human |
| Host: | Mouse |
| Isotype: | IgG1 |
| Clonality: | Monoclonal |
| Immunogen: | Full length human recombinant protein of human COX6B2 (NP_653214) produced in HEK293T cell. |
| Formulation: | PBS (pH 7.3) containing 1% BSA, 50% glycerol and 0.02% sodium azide. |
| Concentration: | 0.84 mg/ml |
| Purification: | Purified from mouse ascites fluids or tissue culture supernatant by affinity chromatography (protein A/G) |
| Conjugation: | Unconjugated |
| Storage: | Store at -20°C as received. |
| Stability: | Stable for 12 months from date of receipt. |
| Predicted Protein Size: | 10.3 kDa |
| Gene Name: | cytochrome c oxidase subunit 6B2 |
| Database Link: | NP_653214 Entrez Gene 125965 Human Q6YFQ2 |
| Synonyms: | COXVIB2; CT59 |
| Protein Pathways: | Alzheimer's disease, Cardiac muscle contraction, Huntington's disease, Metabolic pathways, Oxidative phosphorylation, Parkinson's disease |



[View online »](#)

Product images:

HEK293T cells were transfected with the pCMV6-ENTRY control (Cat# [PS100001], Left lane) or pCMV6-ENTRY COX6B2 (Cat# [RC206224], Right lane) cDNA for 48 hrs and lysed. Equivalent amounts of cell lysates (5 ug per lane) were separated by SDS-PAGE and immunoblotted with anti-COX6B2(Cat# TA501377). Positive lysates [LY408248] (100ug) and [LC408248] (20ug) can be purchased separately from OriGene.



Anti-COX6B2 mouse monoclonal antibody (TA501377) immunofluorescent staining of COS7 cells transiently transfected by pCMV6-ENTRY COX6B2 ([RC206224]).