

## Product datasheet for **TA501358S**

### **TBXAS1 Mouse Monoclonal Antibody [Clone ID: OTI2C1]**

#### **Product data:**

Product Type:	Primary Antibodies
Clone Name:	OTI2C1
Applications:	FC, IF, IHC, WB
Recommended Dilution:	WB 1:1000~2000, IHC 1:50, IF 1:100, FLOW 1:100
Reactivity:	Human, Rat
Host:	Mouse
Isotype:	IgG2a
Clonality:	Monoclonal
Immunogen:	Full length human recombinant protein of human TBXAS1(NP_001052) produced in HEK293T cell.
Formulation:	PBS (pH 7.3) containing 1% BSA, 50% glycerol and 0.02% sodium azide.
Concentration:	0.86 mg/ml
Purification:	Purified from mouse ascites fluids or tissue culture supernatant by affinity chromatography (protein A/G)
Conjugation:	Unconjugated
Storage:	Store at -20°C as received.
Stability:	Stable for 12 months from date of receipt.
Predicted Protein Size:	60.5 kDa
Gene Name:	thromboxane A synthase 1
Database Link:	<a href="#">NP_001052</a> <a href="#">Entrez Gene 24886 Rat</a> <a href="#">Entrez Gene 6916 Human</a> <a href="#">P24557</a>



[View online »](#)

**Background:**

This gene encodes a member of the cytochrome P450 superfamily of enzymes. The cytochrome P450 proteins are monooxygenases which catalyze many reactions involved in drug metabolism and synthesis of cholesterol, steroids and other lipids. However, this protein is considered a member of the cytochrome P450 superfamily on the basis of sequence similarity rather than functional similarity. This endoplasmic reticulum membrane protein catalyzes the conversion of prostglandin H2 to thromboxane A2, a potent vasoconstrictor and inducer of platelet aggregation. The enzyme plays a role in several pathophysiological processes including hemostasis, cardiovascular disease, and stroke. Alternatively spliced transcript variants encoding different isoforms have been found for this gene. [provided by RefSeq]

**Synonyms:**

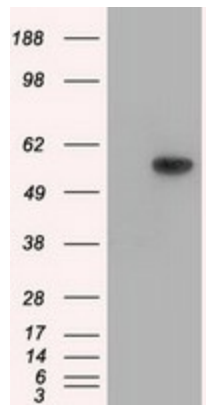
BDPLT14; CYP5; CYP5A1; GHOSAL; THAS; TS; TXAS; TXS

**Protein Families:**

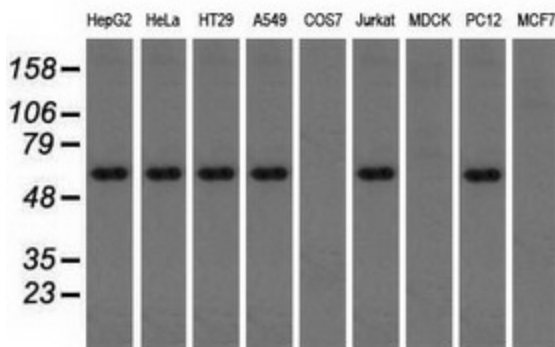
Druggable Genome, P450

**Protein Pathways:**

Arachidonic acid metabolism, Metabolic pathways

**Product images:**


HEK293T cells were transfected with the pCMV6-ENTRY control (Cat# [PS100001], Left lane) or pCMV6-ENTRY TBXAS1 (Cat# [RC208028], Right lane) cDNA for 48 hrs and lysed. Equivalent amounts of cell lysates (5 ug per lane) were separated by SDS-PAGE and immunoblotted with anti-TBXAS1(Cat# [TA501358]). Positive lysates [LY420741] (100ug) and [LC420741] (20ug) can be purchased separately from OriGene.



Western blot analysis of extracts (35ug) from 9 different cell lines by using anti-TBXAS1 monoclonal antibody.

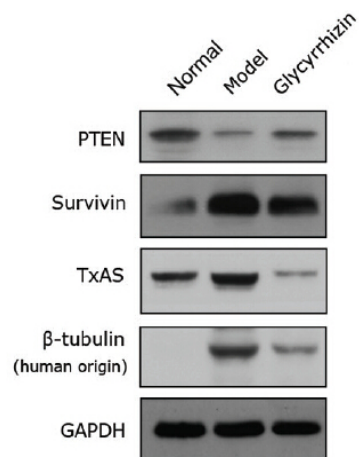
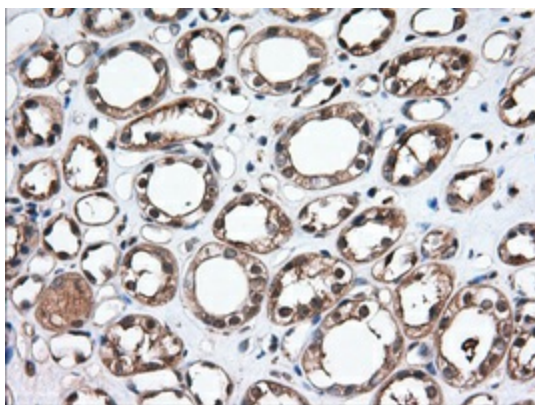
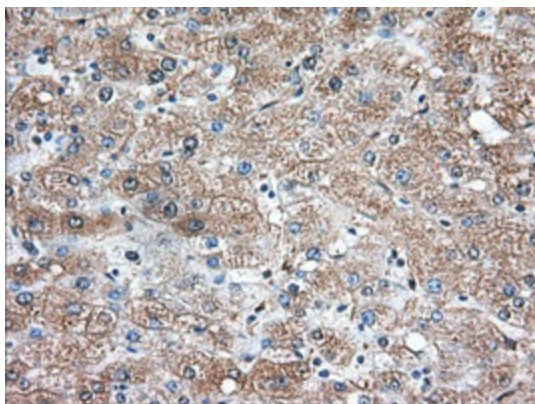


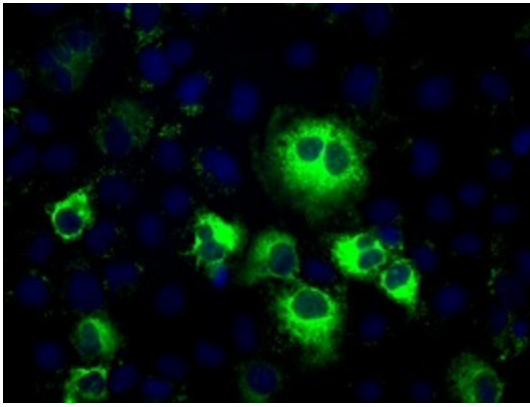
Figure from citation: Western Blot of TBXAS1 (TxAS) protein level by using anti-TBXAS1 antibody in human lung adenocarcinoma. Dilution: 1:1000 [View Citation](#)



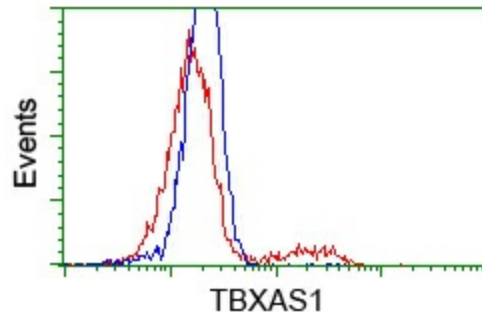
Immunohistochemical staining of paraffin-embedded Human Kidney tissue within the normal limits using anti-TBXAS1 mouse monoclonal antibody. (Heat-induced epitope retrieval by 10mM citric buffer, pH6.0, 100°C for 10min, [TA501358], Dilution 1:50)



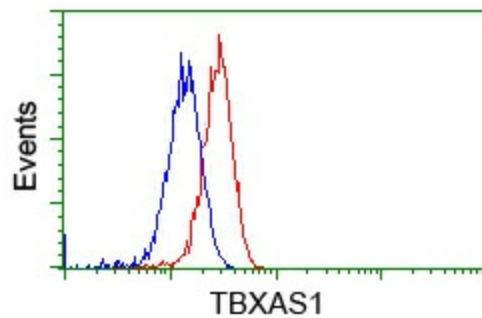
Immunohistochemical staining of paraffin-embedded Human liver tissue within the normal limits using anti-TBXAS1 mouse monoclonal antibody. (Heat-induced epitope retrieval by 10mM citric buffer, pH6.0, 100°C for 10min, [TA501358], Dilution 1:50)



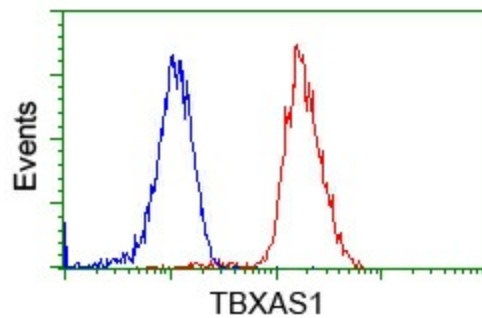
Anti-TBXAS1 mouse monoclonal antibody ([TA501358]) immunofluorescent staining of COS7 cells transiently transfected by pCMV6-ENTRY TBXAS1 ([RC208028]).



HEK293T cells transfected with either [RC208028] overexpress plasmid (Red) or empty vector control plasmid (Blue) were immunostained by anti-TBXAS1 antibody ([TA501358]), and then analyzed by flow cytometry.



Flow cytometric Analysis of HeLa cells, using anti-TBXAS1 antibody ([TA501358]), (Red), compared to a nonspecific negative control antibody (TA50011), (Blue).



Flow cytometric Analysis of Jurkat cells, using anti-TBXAS1 antibody ([TA501358]), (Red), compared to a nonspecific negative control antibody (TA50011), (Blue).