

Product datasheet for **TA501353AM**

CYB5R3 Mouse Monoclonal Antibody (Biotin conjugated) [Clone ID: OTI2A10]

Product data:

Product Type:	Primary Antibodies
Clone Name:	OTI2A10
Applications:	FC, IHC, WB
Recommended Dilution:	WB 1:200~500, IHC 1:150, FLOW 1:100
Reactivity:	Human, Dog, Monkey
Host:	Mouse
Isotype:	IgG2b
Clonality:	Monoclonal
Immunogen:	Full length human recombinant protein of human CYB5R3 (NP_000389) produced in HEK293T cell.
Formulation:	PBS (pH 7.3) containing 1% BSA, 50% glycerol and 0.02% sodium azide.
Concentration:	0.5 mg/ml
Purification:	Purified from mouse ascites fluids or tissue culture supernatant by affinity chromatography (protein A/G)
Conjugation:	Biotin
Storage:	Store at -20°C as received.
Stability:	Stable for 12 months from date of receipt.
Predicted Protein Size:	34.1 kDa
Gene Name:	cytochrome b5 reductase 3
Database Link:	NP_000389 Entrez Gene 474479 Dog Entrez Gene 714058 Monkey Entrez Gene 1727 Human P00387



[View online »](#)

Background:

This gene encodes cytochrome b5 reductase, which includes a membrane-bound form in somatic cells (anchored in the endoplasmic reticulum, mitochondrial and other membranes) and a soluble form in erythrocytes. The membrane-bound form exists mainly on the cytoplasmic side of the endoplasmic reticulum and functions in desaturation and elongation of fatty acids, in cholesterol biosynthesis, and in drug metabolism. The erythrocyte form is located in a soluble fraction of circulating erythrocytes and is involved in methemoglobin reduction. The membrane-bound form has both membrane-binding and catalytic domains, while the soluble form has only the catalytic domain. Alternate splicing results in multiple transcript variants. Mutations in this gene cause methemoglobinemias. [provided by RefSeq]

Synonyms:

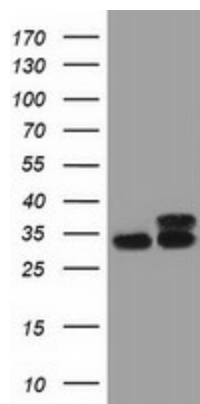
B5R; DIA1

Protein Families:

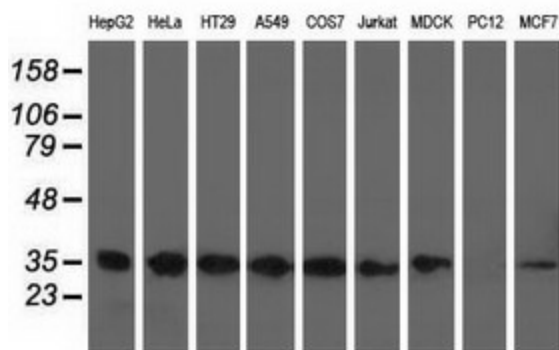
Druggable Genome

Protein Pathways:

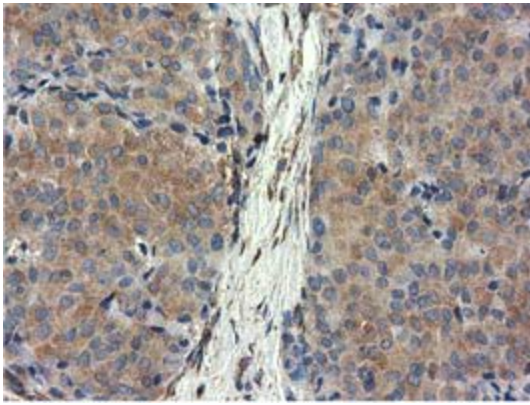
Amino sugar and nucleotide sugar metabolism

Product images:


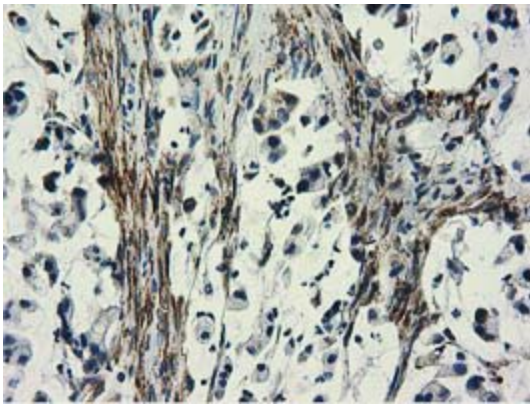
HEK293T cells were transfected with the pCMV6-ENTRY control (Cat# [PS100001], Left lane) or pCMV6-ENTRY CYB5R3 (Cat# [RC201592], Right lane) cDNA for 48 hrs and lysed. Equivalent amounts of cell lysates (5 ug per lane) were separated by SDS-PAGE and immunoblotted with anti-CYB5R3 (Cat# [TA501353]). Positive lysates [LY400140] (100ug) and [LC400140] (20ug) can be purchased separately from OriGene.



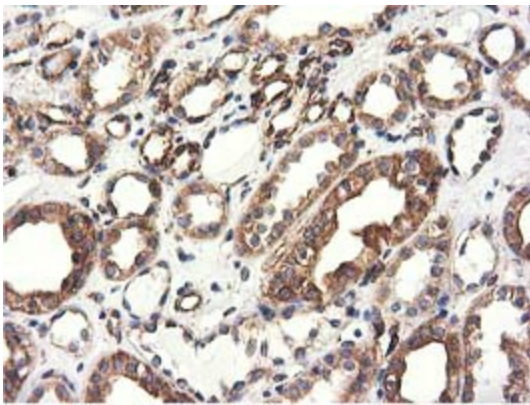
Western blot analysis of extracts (35ug) from 9 different cell lines by using anti-CYB5R3 monoclonal antibody.



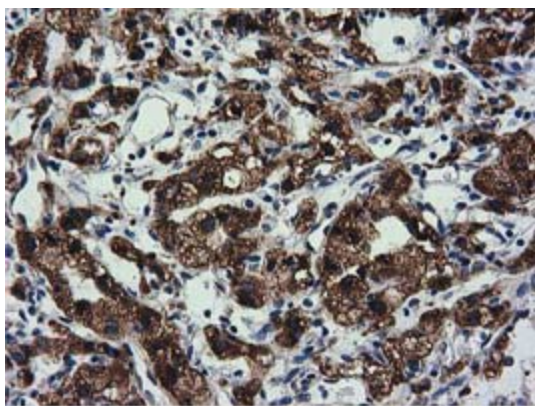
Immunohistochemical staining of paraffin-embedded Adenocarcinoma of Human breast tissue using anti-CYB5R3 mouse monoclonal antibody. (Heat-induced epitope retrieval by 10mM citric buffer, pH6.0, 100°C for 10min, [TA501353])



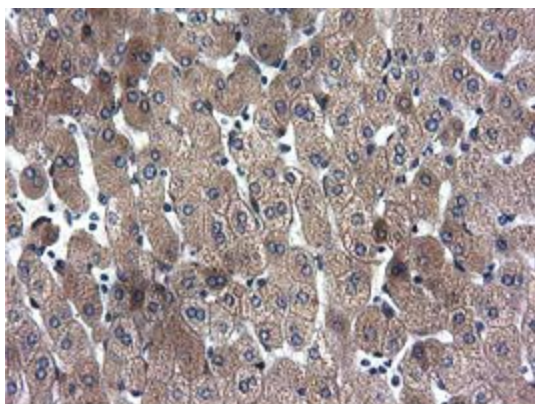
Immunohistochemical staining of paraffin-embedded Adenocarcinoma of Human colon tissue using anti-CYB5R3 mouse monoclonal antibody. (Heat-induced epitope retrieval by 10mM citric buffer, pH6.0, 100°C for 10min, [TA501353])



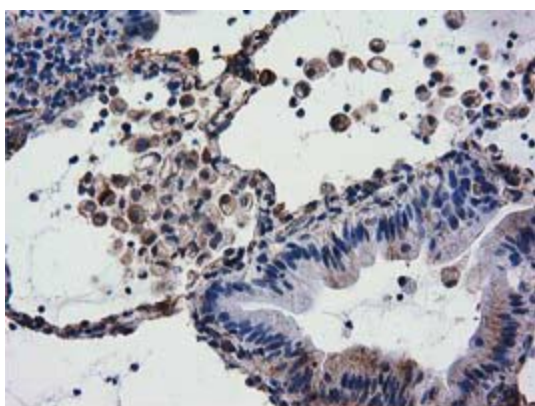
Immunohistochemical staining of paraffin-embedded Human Kidney tissue within the normal limits using anti-CYB5R3 mouse monoclonal antibody. (Heat-induced epitope retrieval by 10mM citric buffer, pH6.0, 100°C for 10min, [TA501353])



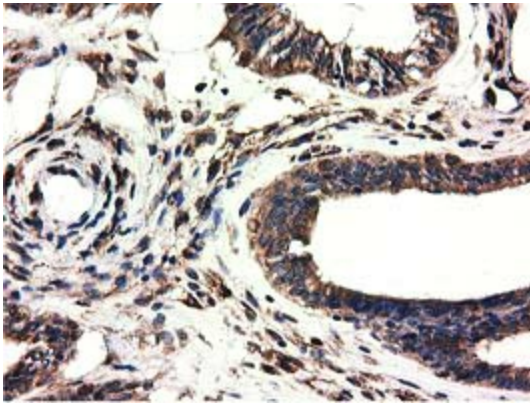
Immunohistochemical staining of paraffin-embedded Carcinoma of Human kidney tissue using anti-CYB5R3 mouse monoclonal antibody. (Heat-induced epitope retrieval by 10mM citric buffer, pH6.0, 100°C for 10min, [TA501353])



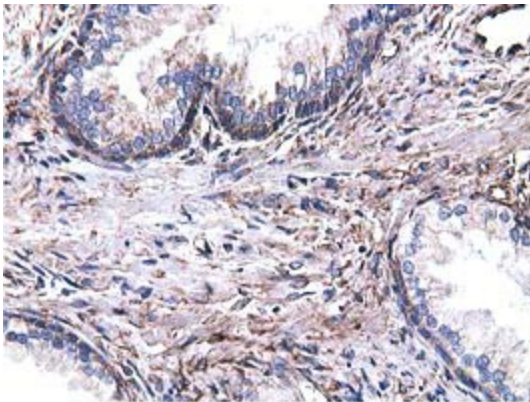
Immunohistochemical staining of paraffin-embedded Human liver tissue within the normal limits using anti-CYB5R3 mouse monoclonal antibody. (Heat-induced epitope retrieval by 10mM citric buffer, pH6.0, 100°C for 10min, [TA501353])



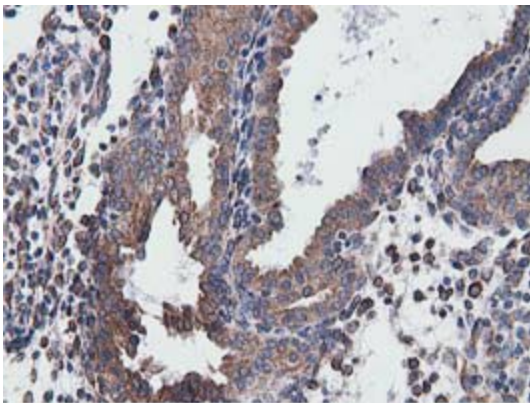
Immunohistochemical staining of paraffin-embedded Carcinoma of Human lung tissue using anti-CYB5R3 mouse monoclonal antibody. (Heat-induced epitope retrieval by 10mM citric buffer, pH6.0, 100°C for 10min, [TA501353])



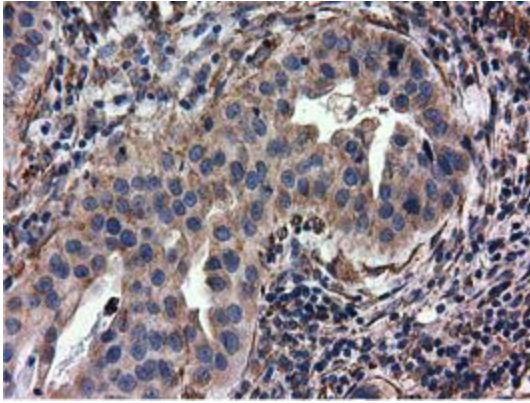
Immunohistochemical staining of paraffin-embedded Adenocarcinoma of Human endometrium tissue using anti-CYB5R3 mouse monoclonal antibody. (Heat-induced epitope retrieval by 10mM citric buffer, pH6.0, 100°C for 10min, [TA501353])



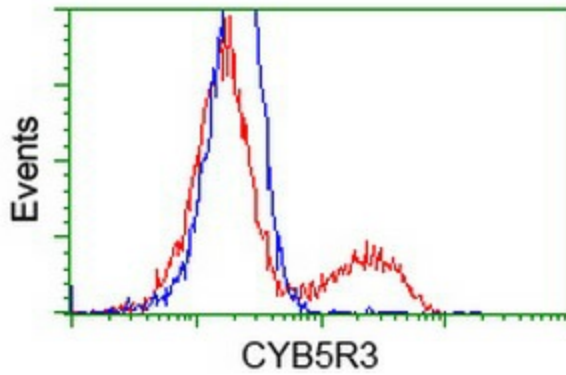
Immunohistochemical staining of paraffin-embedded Human prostate tissue within the normal limits using anti-CYB5R3 mouse monoclonal antibody. (Heat-induced epitope retrieval by 10mM citric buffer, pH6.0, 100°C for 10min, [TA501353])



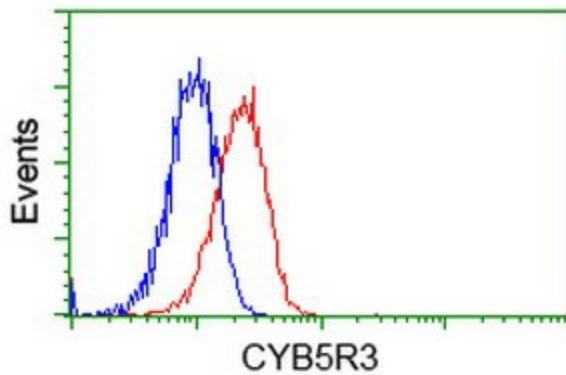
Immunohistochemical staining of paraffin-embedded Carcinoma of Human prostate tissue using anti-CYB5R3 mouse monoclonal antibody. (Heat-induced epitope retrieval by 10mM citric buffer, pH6.0, 100°C for 10min, [TA501353])



Immunohistochemical staining of paraffin-embedded Carcinoma of Human bladder tissue using anti-CYB5R3 mouse monoclonal antibody. (Heat-induced epitope retrieval by 10mM citric buffer, pH6.0, 100°C for 10min, [TA501353])



HEK293T cells transfected with either [RC201592] overexpress plasmid (Red) or empty vector control plasmid (Blue) were immunostained by anti-CYB5R3 antibody ([TA501353]), and then analyzed by flow cytometry.



Flow cytometric Analysis of Jurkat cells, using anti-CYB5R3 antibody ([TA501353]), (Red), compared to a nonspecific negative control antibody (TA50011), (Blue).