

Product datasheet for **TA501352S**

GRASP65 (GORASP1) Mouse Monoclonal Antibody [Clone ID: OTI5C5]

Product data:

Product Type:	Primary Antibodies
Clone Name:	OTI5C5
Applications:	FC, IF, IHC, WB
Recommended Dilution:	WB 1:1000~2000, IHC 1:50, IF 1:100, FLOW 1:100
Reactivity:	Human, Dog, Rat
Host:	Mouse
Isotype:	IgG2a
Clonality:	Monoclonal
Immunogen:	Full length human recombinant protein of human GORASP1 (NP_114105) produced in HEK293T cell.
Formulation:	PBS (pH 7.3) containing 1% BSA, 50% glycerol and 0.02% sodium azide.
Concentration:	0.96 mg/ml
Purification:	Purified from mouse ascites fluids or tissue culture supernatant by affinity chromatography (protein A/G)
Conjugation:	Unconjugated
Storage:	Store at -20°C as received.
Stability:	Stable for 12 months from date of receipt.
Predicted Protein Size:	46.3 kDa
Gene Name:	golgi reassembly stacking protein 1
Database Link:	NP_114105 Entrez Gene 56082 Rat Entrez Gene 485594 Dog Entrez Gene 64689 Human Q9BQQ3



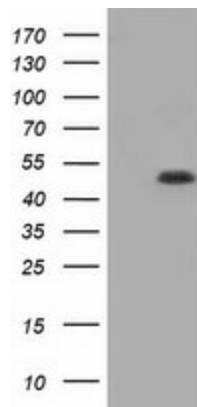
[View online »](#)

Background:

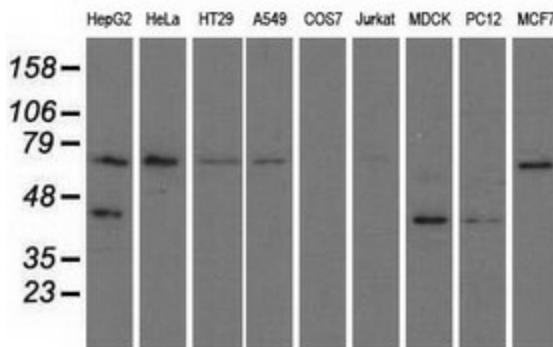
The Golgi complex plays a key role in the sorting and modification of proteins exported from the endoplasmic reticulum. The protein encoded by this gene is a membrane protein involved in establishing the stacked structure of the Golgi apparatus. It is a caspase-3 substrate, and cleavage of this encoded protein contributes to Golgi fragmentation in apoptosis. This encoded protein can form a complex with the Golgi matrix protein GOLGA2, and this complex binds to the vesicle docking protein p115. Several alternatively spliced transcript variants of this gene have been identified, but their full-length natures have not been determined. [provided by RefSeq]

Synonyms:

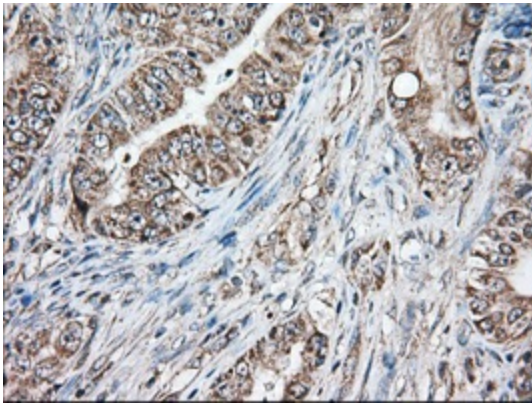
GOLPH5; GRASP65; P65

Product images:


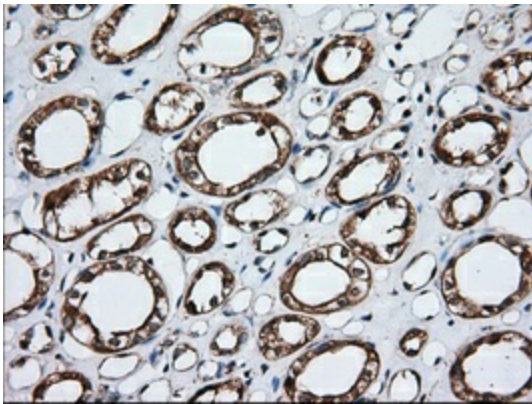
HEK293T cells were transfected with the pCMV6-ENTRY control (Left lane) or pCMV6-ENTRY GORASP1 ([RC210076], Right lane) cDNA for 48 hrs and lysed. Equivalent amounts of cell lysates (5 ug per lane) were separated by SDS-PAGE and immunoblotted with anti-GORASP1. Positive lysates [LY403127] (100ug) and [LC403127] (20ug) can be purchased separately from OriGene.



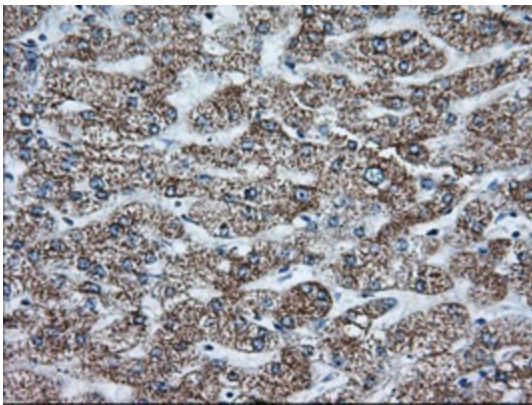
Western blot analysis of extracts (35ug) from 9 different cell lines by using anti-GORASP1 monoclonal antibody.



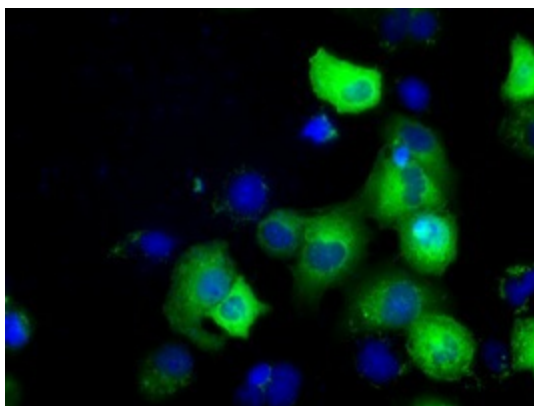
Immunohistochemical staining of paraffin-embedded Adenocarcinoma of Human colon tissue using anti-GORASP1 mouse monoclonal antibody. (Heat-induced epitope retrieval by 10mM citric buffer, pH6.0, 100°C for 10min, [TA501352], Dilution 1:50)



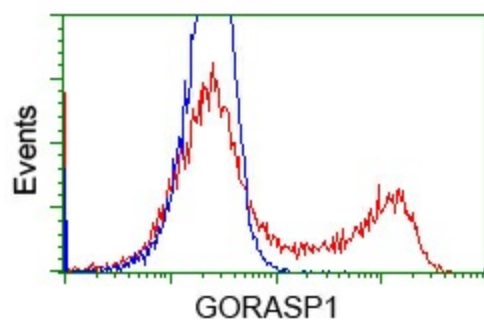
Immunohistochemical staining of paraffin-embedded Human Kidney tissue within the normal limits using anti-GORASP1 mouse monoclonal antibody. (Heat-induced epitope retrieval by 10mM citric buffer, pH6.0, 100°C for 10min, [TA501352], Dilution 1:50)



Immunohistochemical staining of paraffin-embedded Human liver tissue within the normal limits using anti-GORASP1 mouse monoclonal antibody. (Heat-induced epitope retrieval by 10mM citric buffer, pH6.0, 100°C for 10min, [TA501352], Dilution 1:50)



Anti-GORASP1 mouse monoclonal antibody ([TA501352]) immunofluorescent staining of COS7 cells transiently transfected by pCMV6-ENTRY GORASP1 ([RC210076]).



HEK293T cells transfected with either [RC210076] overexpress plasmid (Red) or empty vector control plasmid (Blue) were immunostained by anti-GORASP1 antibody ([TA501352]), and then analyzed by flow cytometry.