

## Product datasheet for **TA501350M**

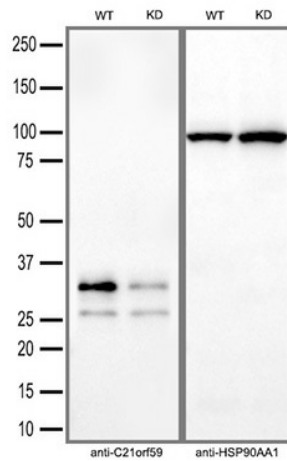
### CFAP298 Mouse Monoclonal Antibody [Clone ID: OTI2H5]

#### Product data:

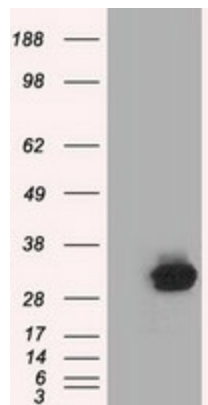
|                         |                                                                                                           |
|-------------------------|-----------------------------------------------------------------------------------------------------------|
| Product Type:           | Primary Antibodies                                                                                        |
| Clone Name:             | OTI2H5                                                                                                    |
| Applications:           | FC, IF, WB                                                                                                |
| Recommended Dilution:   | WB: 1:200 - 1:1000, IF 1:100, FLOW 1:100                                                                  |
| Reactivity:             | Human                                                                                                     |
| Host:                   | Mouse                                                                                                     |
| Isotype:                | IgG1                                                                                                      |
| Clonality:              | Monoclonal                                                                                                |
| Immunogen:              | Full length human recombinant protein of human C21orf59 (NP_067077) produced in HEK293T cell.             |
| Formulation:            | PBS (pH 7.3) containing 1% BSA, 50% glycerol and 0.02% sodium azide.                                      |
| Concentration:          | 0.55 mg/ml                                                                                                |
| Purification:           | Purified from mouse ascites fluids or tissue culture supernatant by affinity chromatography (protein A/G) |
| Conjugation:            | Unconjugated                                                                                              |
| Storage:                | Store at -20°C as received.                                                                               |
| Stability:              | Stable for 12 months from date of receipt.                                                                |
| Predicted Protein Size: | 33.0 kDa                                                                                                  |
| Gene Name:              | cilia and flagella associated protein 298                                                                 |
| Database Link:          | <a href="#">NP_067077</a><br><a href="#">Entrez Gene 56683 Human</a><br><a href="#">P57076</a>            |
| Synonyms:               | C21orf48; CILD26; FBB18                                                                                   |


[View online »](#)

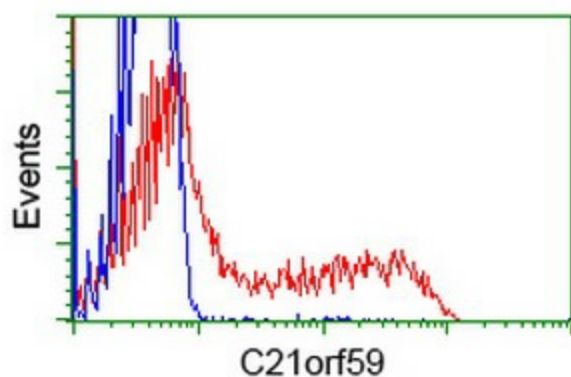
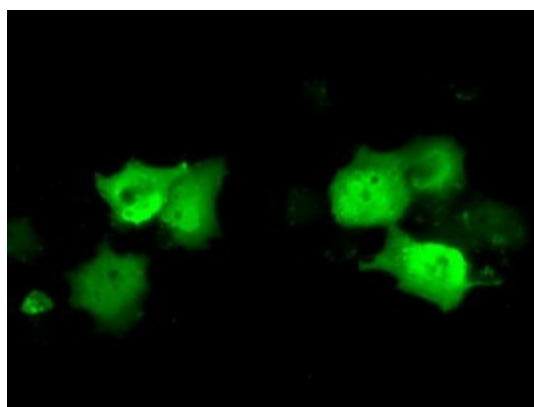
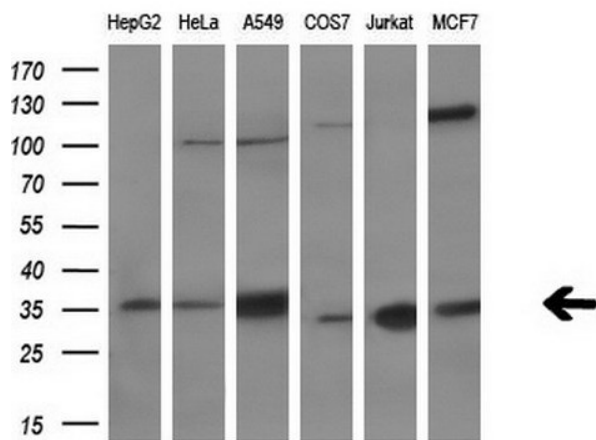
## Product images:

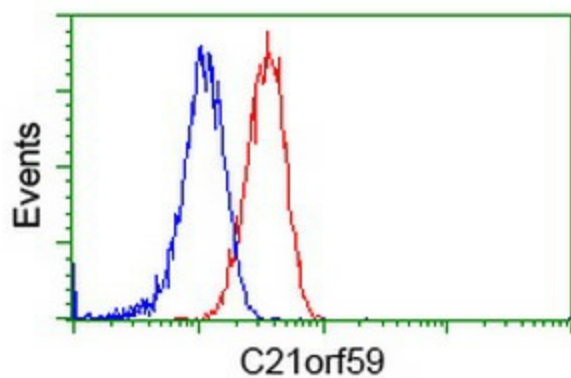


Equivalent amounts of cell lysates (30 ug per lane) of wild-type HT-1080 cells (WT) and C21orf59-Knockdown HT-1080 cells (KD) were separated by SDS-PAGE and immunoblotted with anti-C21orf59 monoclonal antibody [TA501350] (1:2500). Then the blotted membrane was stripped and reprobed with anti-HSP90AA1 antibody as a loading control.



HEK293T cells were transfected with the pCMV6-ENTRY control (Cat# [PS100001], Left lane) or pCMV6-ENTRY C21orf59 (Cat# [RC200169], Right lane) cDNA for 48 hrs and lysed. Equivalent amounts of cell lysates (5 ug per lane) were separated by SDS-PAGE and immunoblotted with anti-C21orf59 (Cat# [TA501350]). Positive lysates [LY402864] (100ug) and [LC402864] (20ug) can be purchased separately from OriGene.





Flow cytometric Analysis of Jurkat cells, using anti-C21orf59 antibody ([TA501350]), (Red), compared to a nonspecific negative control antibody (TA50011), (Blue).