

## Product datasheet for **TA501349**

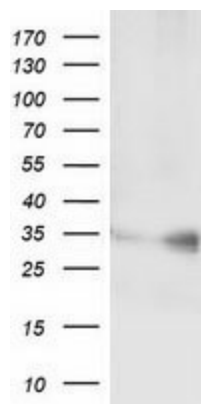
### CFAP298 Mouse Monoclonal Antibody [Clone ID: OTI1F1]

#### Product data:

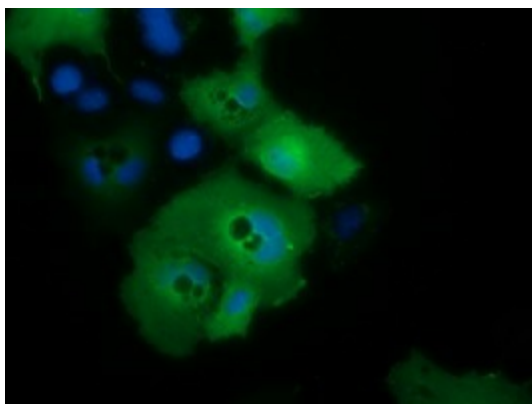
Product Type:	Primary Antibodies
Clone Name:	OTI1F1
Applications:	IF, WB
Recommended Dilution:	WB 1:2000, IF 1:100
Reactivity:	Human
Host:	Mouse
Isotype:	IgG1
Clonality:	Monoclonal
Immunogen:	Full length human recombinant protein of human C21orf59 (NP_067077) produced in HEK293T cell.
Formulation:	PBS (pH 7.3) containing 1% BSA, 50% glycerol and 0.02% sodium azide.
Concentration:	0.66 mg/ml
Purification:	Purified from mouse ascites fluids or tissue culture supernatant by affinity chromatography (protein A/G)
Conjugation:	Unconjugated
Storage:	Store at -20°C as received.
Stability:	Stable for 12 months from date of receipt.
Predicted Protein Size:	33.2 kDa
Gene Name:	cilia and flagella associated protein 298
Database Link:	<a href="#">NP_067077</a> <a href="#">Entrez Gene 56683 Human</a> <a href="#">P57076</a>
Synonyms:	C21orf48; CILD26; FBB18



[View online »](#)

**Product images:**

HEK293T cells were transfected with the pCMV6-ENTRY control (Left lane) or pCMV6-ENTRY C21orf59 ([RC200169], Right lane) cDNA for 48 hrs and lysed. Equivalent amounts of cell lysates (5 ug per lane) were separated by SDS-PAGE and immunoblotted with anti-C21orf59. Positive lysates [LY402864] (100ug) and [LC402864] (20ug) can be purchased separately from OriGene.



Anti-C21orf59 mouse monoclonal antibody (TA501349) immunofluorescent staining of COS7 cells transiently transfected by pCMV6-ENTRY C21orf59 ([RC200169]).