

Product datasheet for **TA501334**

CD5 Mouse Monoclonal Antibody [Clone ID: OTI6F7]

Product data:

Product Type:	Primary Antibodies
Clone Name:	OTI6F7
Applications:	FC, IHC, WB
Recommended Dilution:	WB 1:500~2000, FLOW 1:100
Reactivity:	Human, Monkey
Host:	Mouse
Isotype:	IgG1
Clonality:	Monoclonal
Immunogen:	Full length human recombinant protein of human CD5 (NP_055022) produced in HEK293T cell.
Formulation:	PBS (pH 7.3) containing 1% BSA, 50% glycerol and 0.02% sodium azide.
Concentration:	0.96 mg/ml
Purification:	Purified from mouse ascites fluids or tissue culture supernatant by affinity chromatography (protein A/G)
Conjugation:	Unconjugated
Storage:	Store at -20°C as received.
Stability:	Stable for 12 months from date of receipt.
Predicted Protein Size:	54.4 kDa
Gene Name:	CD5 molecule
Database Link:	NP_055022 Entrez Gene 695249 Monkey Entrez Gene 921 Human P06127



[View online »](#)

Background:

CD5 (Lymphocyte antigen T1/Leu-1) is a transmembrane glycoprotein which has been implicated as a receptor in the regulation of T-cell proliferation (1). CD5 is part of the scavenger receptor cysteine-rich (SRCR) family group B and it is found on 95% of thymocytes and 72% of peripheral blood lymphocytes. In lymph nodes, the main reactivity is observed in T cell areas. CD5 is expressed by T cell leukemia, lymphomas, and activated T cells. Occasionally, CD5 antigen is also expressed on a subset of B cells. Mantle cell lymphomas (same as diffuse centrocytic lymphomas) are CD5+ while the follicle center cell lymphomas are CD5-. A ligand for CD72/LYB-2, CD5 has been linked to negative regulation of T cell and B cell receptors signaling (2).

Synonyms:

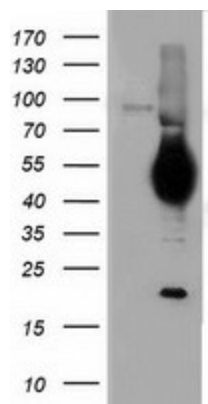
LEU1; T1

Protein Families:

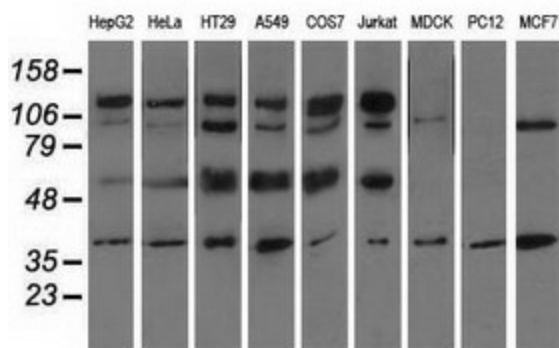
Druggable Genome, Transmembrane

Protein Pathways:

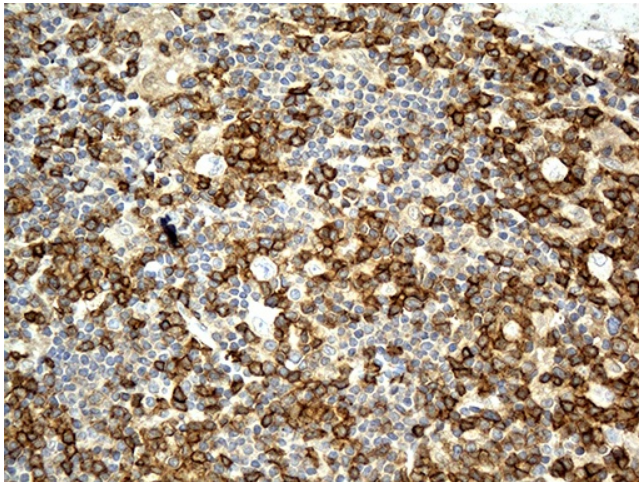
Hematopoietic cell lineage

Product images:


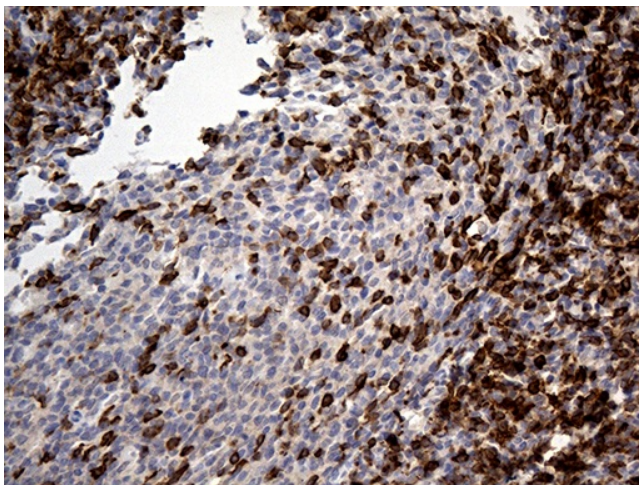
HEK293T cells were transfected with the pCMV6-ENTRY control (Left lane) or pCMV6-ENTRY CD5 ([RC206494], Right lane) cDNA for 48 hrs and lysed. Equivalent amounts of cell lysates (5 ug per lane) were separated by SDS-PAGE and immunoblotted with anti-CD5. Positive lysates [LY415443] (100ug) and [LC415443] (20ug) can be purchased separately from OriGene.



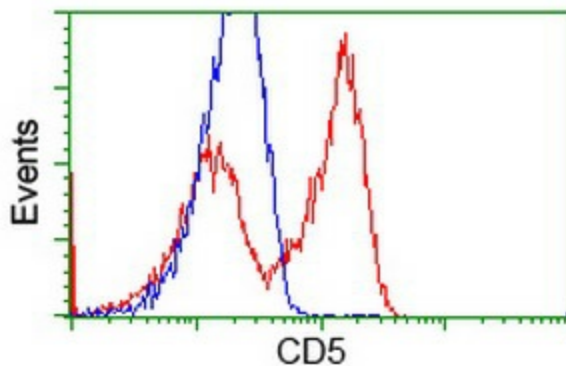
Western blot analysis of extracts (35ug) from 9 different cell lines by using anti-CD5 monoclonal antibody.



Immunohistochemical staining of paraffin-embedded Human lymphoma tissue using anti-CD5 mouse monoclonal antibody. (Heat-induced epitope retrieval by 1mM EDTA in 10mM Tris buffer (pH8.5) at 120°C for 3min, TA501334) (1:500)



Immunohistochemical staining of paraffin-embedded Human tonsil within the normal limits using anti-CD5 mouse monoclonal antibody. (Heat-induced epitope retrieval by 1mM EDTA in 10mM Tris buffer (pH8.5) at 120°C for 3min, TA501334) (1:500)



HEK293T cells transfected with either [RC206494] overexpress plasmid (Red) or empty vector control plasmid (Blue) were immunostained by anti-CD5 antibody (TA501334), and then analyzed by flow cytometry.