

Product datasheet for **TA501323M**

SH3PX1 (SNX9) Mouse Monoclonal Antibody [Clone ID: OTI2A11]

Product data:

Product Type:	Primary Antibodies
Clone Name:	OTI2A11
Applications:	FC, IF, IHC, WB
Recommended Dilution:	WB 1:1000~2000, IHC 1:50, IF 1:100, FLOW 1:100
Reactivity:	Human, Dog, Mouse, Rat
Host:	Mouse
Isotype:	IgG2a
Clonality:	Monoclonal
Immunogen:	Full length human recombinant protein of human SNX9(NP_057308) produced in HEK293T cell.
Formulation:	PBS (pH 7.3) containing 1% BSA, 50% glycerol and 0.02% sodium azide.
Concentration:	1 mg/ml
Purification:	Purified from mouse ascites fluids or tissue culture supernatant by affinity chromatography (protein A/G)
Conjugation:	Unconjugated
Storage:	Store at -20°C as received.
Stability:	Stable for 12 months from date of receipt.
Predicted Protein Size:	66.4 kDa
Gene Name:	sorting nexin 9
Database Link:	NP_057308 Entrez Gene 66616 Mouse Entrez Gene 683687 Rat Entrez Gene 476254 Dog Entrez Gene 51429 Human Q9Y5X1



[View online »](#)

Background:

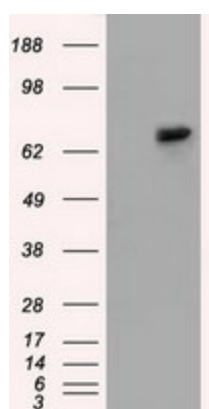
This gene encodes a member of the sorting nexin family. Members of this family contain a phox (PX) domain, which is a phosphoinositide binding domain, and are involved in intracellular trafficking. This protein does not contain a coiled coil region, like some family members, but does contain a SH3 domain near its N-terminus. This protein interacts with the cytoplasmic domains of the precursor but not the processed forms of a disintegrin and metalloprotease domain 9 and 15. This protein binds the beta-appendage domain of adaptor protein 2 and may function to assist adaptor protein 2 in its role at the plasma membrane. This protein interacts with activated Cdc42-associated kinase-2 to regulate the degradation of epidermal growth factor receptor protein.

Synonyms:

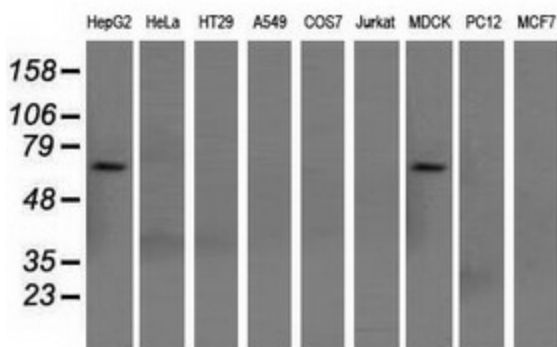
SDP1; SH3PX1; SH3PXD3A; WISP

Protein Families:

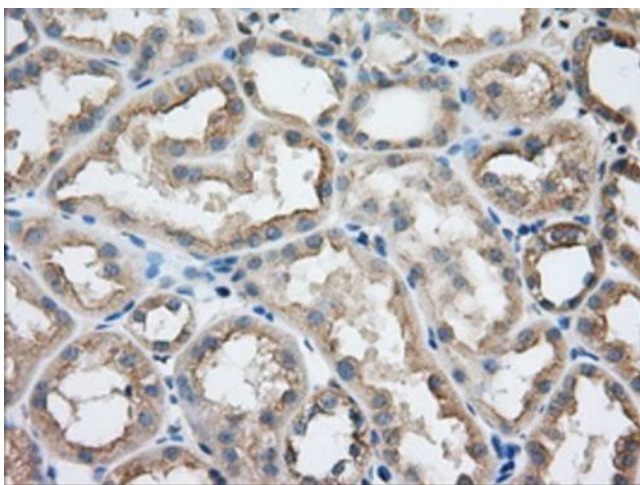
Druggable Genome

Product images:


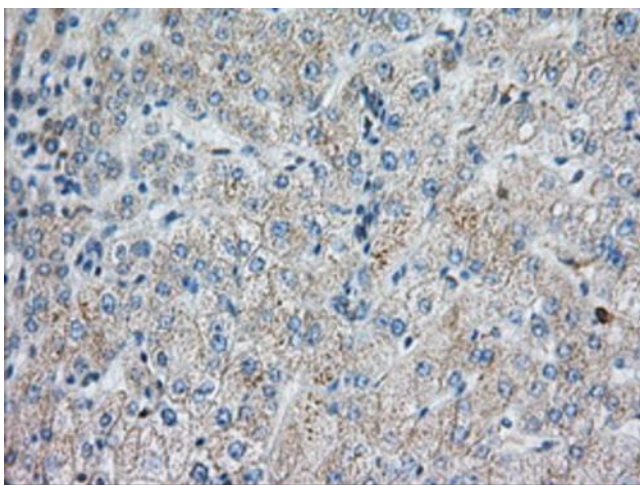
HEK293T cells were transfected with the pCMV6-ENTRY control (Left lane) or pCMV6-ENTRY SNX9 [RC202822], Right lane) cDNA for 48 hrs and lysed. Equivalent amounts of cell lysates (5 ug per lane) were separated by SDS-PAGE and immunoblotted with anti-SNX9. Positive lysates [LY402520] (100ug) and [LC402520] (20ug) can be purchased separately from OriGene.



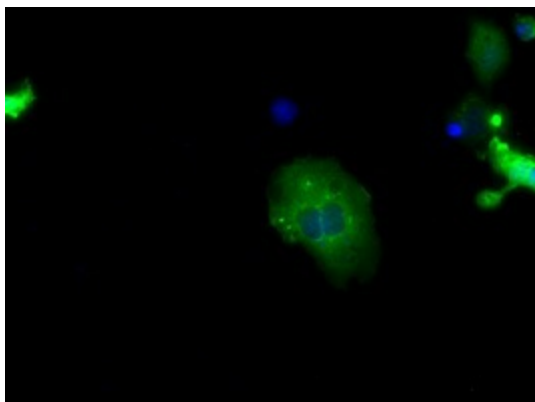
Western blot analysis of extracts (35ug) from 9 different cell lines by using anti-SNX9 monoclonal antibody.



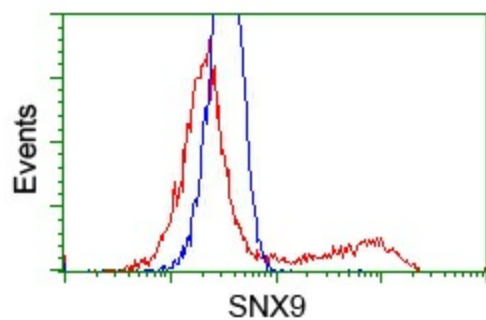
Immunohistochemical staining of paraffin-embedded Human Kidney tissue within the normal limits using anti-SNX9 mouse monoclonal antibody. Heat-induced epitope retrieval by EDTA solution buffer pH 8.0 at 120°C for 3 min.



Immunohistochemical staining of paraffin-embedded Human liver tissue within the normal limits using anti-SNX9 mouse monoclonal antibody. Heat-induced epitope retrieval by EDTA solution buffer pH 8.0 at 120°C for 3 min.



Anti-SNX9 mouse monoclonal antibody ([TA501323]) immunofluorescent staining of COS7 cells transiently transfected by pCMV6-ENTRY SNX9 ([RC202822]).



HEK293T cells transfected with either [RC202822] overexpress plasmid (Red) or empty vector control plasmid (Blue) were immunostained by anti-SNX9 antibody ([TA501323]), and then analyzed by flow cytometry.