

## Product datasheet for **TA501319**

### HIBCH Mouse Monoclonal Antibody [Clone ID: OT11C7]

#### Product data:

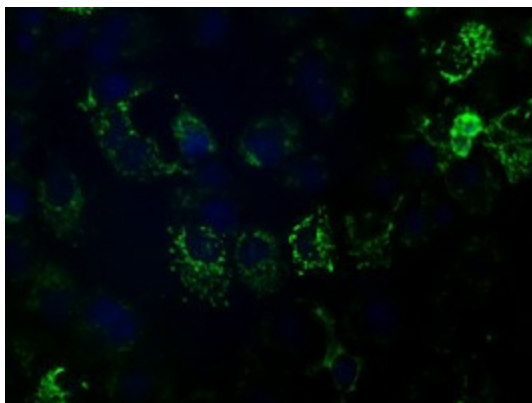
Product Type:	Primary Antibodies
Clone Name:	OT11C7
Applications:	FC, IF, WB
Recommended Dilution:	WB 1:1000~2000, IF 1:100, FLOW 1:100
Reactivity:	Human, Dog, Rat
Host:	Mouse
Isotype:	IgG2a
Clonality:	Monoclonal
Immunogen:	Full length human recombinant protein of human HIBCH (NP_055177) produced in HEK293T cell.
Formulation:	PBS (pH 7.3) containing 1% BSA, 50% glycerol and 0.02% sodium azide.
Concentration:	0.85 mg/ml
Purification:	Purified from mouse ascites fluids or tissue culture supernatant by affinity chromatography (protein A/G)
Conjugation:	Unconjugated
Storage:	Store at -20°C as received.
Stability:	Stable for 12 months from date of receipt.
Predicted Protein Size:	39.4 kDa
Gene Name:	3-hydroxyisobutyryl-CoA hydrolase
Database Link:	<a href="#">NP_055177</a> <a href="#">Entrez Gene 301384 Rat</a> <a href="#">Entrez Gene 607040 Dog</a> <a href="#">Entrez Gene 26275 Human</a> <a href="#">Q6NVY1</a>
Background:	This gene encodes the enzyme responsible for hydrolysis of both HIBYL-CoA and beta-hydroxypropionyl-CoA. Mutations in this gene have been associated with 3-hydroxyisobutyryl-CoA hydrolase deficiency. Alternative splicing results in multiple transcript variants.
Synonyms:	HIBYLCOAH



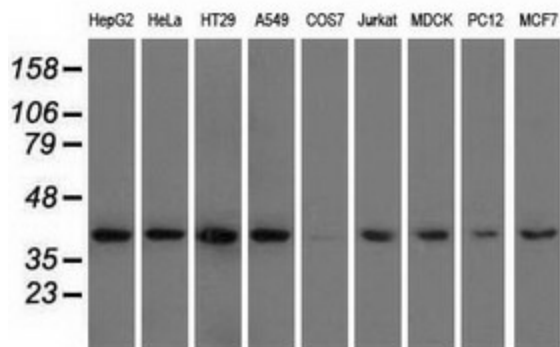
[View online »](#)

**Protein Pathways:** beta-Alanine metabolism, Metabolic pathways, Propanoate metabolism, Valine, leucine and isoleucine degradation

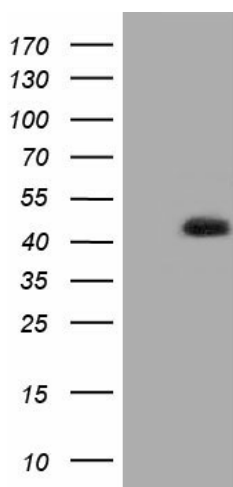
**Product images:**



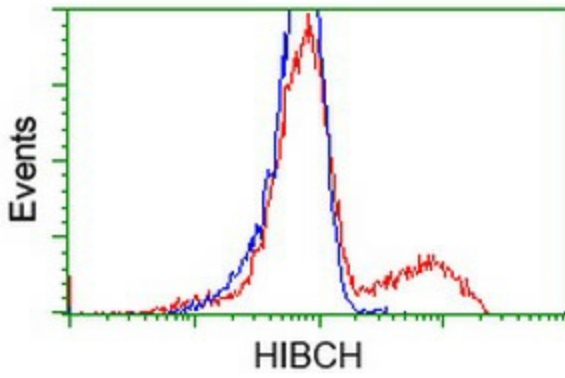
Anti-HIBCH mouse monoclonal antibody (TA501319) immunofluorescent staining of COS7 cells transiently transfected by pCMV6-ENTRY HIBCH ([RC209814]).



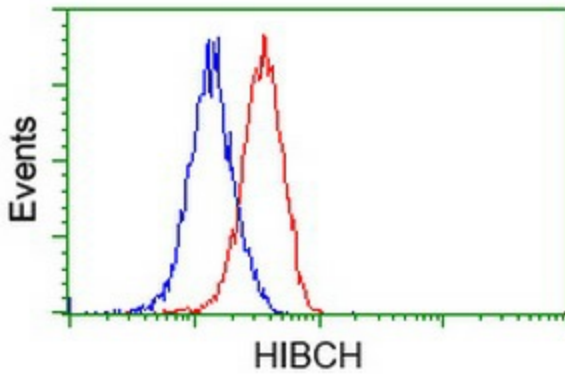
Western blot analysis of extracts (35ug) from 9 different cell lines by using anti-HIBCH monoclonal antibody.



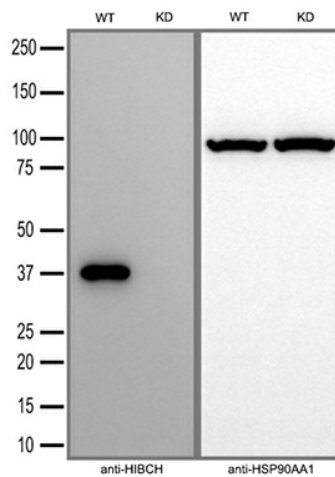
HEK293T cells were transfected with the pCMV6-ENTRY control (Left lane) or pCMV6-ENTRY HIBCH ([RC209814], Right lane) cDNA for 48 hrs and lysed. Equivalent amounts of cell lysates (5 ug per lane) were separated by SDS-PAGE and immunoblotted with anti-HIBCH. Positive lysates [LY402324] (100ug) and [LC402324] (20ug) can be purchased separately from OriGene.



HEK293T cells transfected with either [RC209814] overexpress plasmid (Red) or empty vector control plasmid (Blue) were immunostained by anti-HIBCH antibody (TA501319), and then analyzed by flow cytometry.



Flow cytometric Analysis of Jurkat cells, using anti-HIBCH antibody (TA501319), (Red), compared to a nonspecific negative control antibody (TA50011), (Blue).



Equivalent amounts of cell lysates (30 ug per lane) of wild-type HeLa cells (WT) and HIBCH-Knockdown HeLa cells (KD) were separated by SDS-PAGE and immunoblotted with anti-HIBCH monoclonal antibody TA501319 (1:2500). Then the blotted membrane was stripped and reprobed with anti-HSP90AA1 antibody as a loading control.