

Product datasheet for **TA501317**

HIBCH Mouse Monoclonal Antibody [Clone ID: OTI3H5]

Product data:

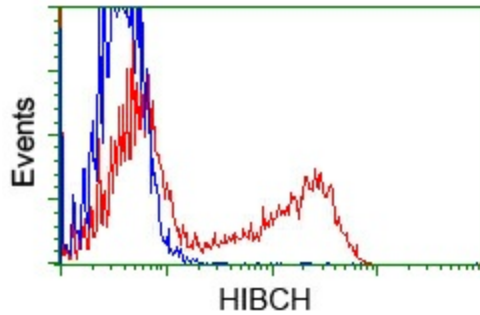
Product Type:	Primary Antibodies
Clone Name:	OTI3H5
Applications:	FC, IHC, WB
Recommended Dilution:	WB 1:1000~2000, IHC 1:50, FLOW 1:100
Reactivity:	Human, Dog
Host:	Mouse
Isotype:	IgG2a
Clonality:	Monoclonal
Immunogen:	Full length human recombinant protein of human HIBCH (NP_055177) produced in HEK293T cell.
Formulation:	PBS (pH 7.3) containing 1% BSA, 50% glycerol and 0.02% sodium azide.
Concentration:	0.9 mg/ml
Purification:	Purified from mouse ascites fluids or tissue culture supernatant by affinity chromatography (protein A/G)
Conjugation:	Unconjugated
Storage:	Store at -20°C as received.
Stability:	Stable for 12 months from date of receipt.
Predicted Protein Size:	39.4 kDa
Gene Name:	3-hydroxyisobutyryl-CoA hydrolase
Database Link:	NP_055177 Entrez Gene 607040 Dog Entrez Gene 26275 Human Q6NVY1
Background:	This gene encodes the enzyme responsible for hydrolysis of both HIBYL-CoA and beta-hydroxypropionyl-CoA. Mutations in this gene have been associated with 3-hydroxyisobutyryl-CoA hydrolase deficiency. Alternative splicing results in multiple transcript variants.
Synonyms:	HIBYLCOAH



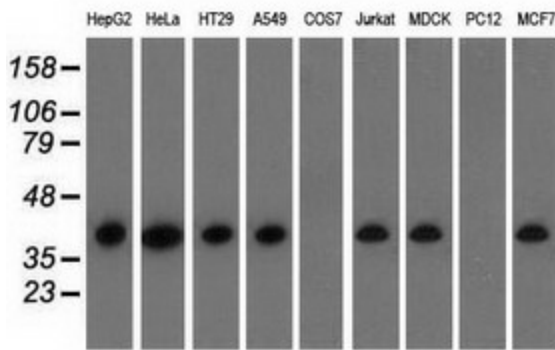
[View online »](#)

Protein Pathways: beta-Alanine metabolism, Metabolic pathways, Propanoate metabolism, Valine, leucine and isoleucine degradation

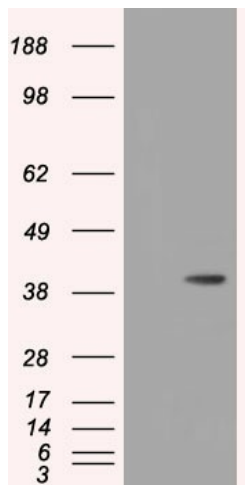
Product images:



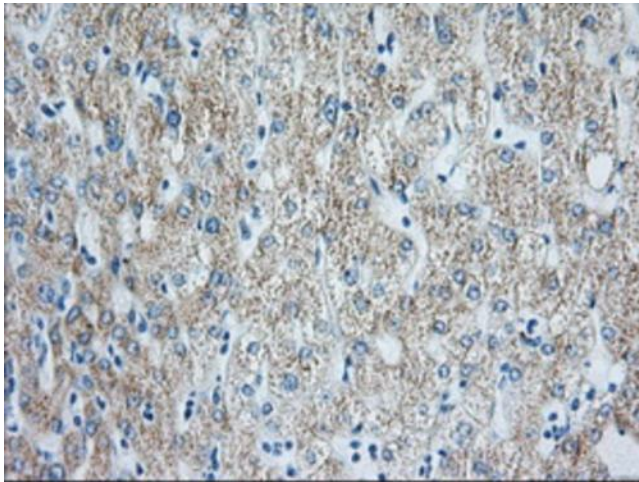
HEK293T cells transfected with either [RC209814] overexpress plasmid (Red) or empty vector control plasmid (Blue) were immunostained by anti-HIBCH antibody (TA501317), and then analyzed by flow cytometry.



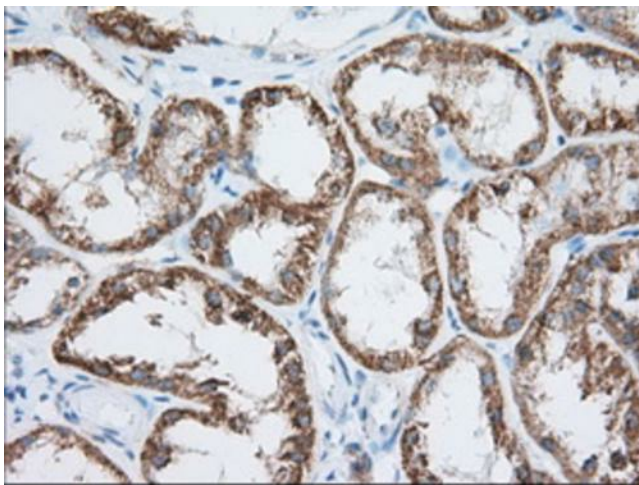
Western blot analysis of extracts (35ug) from 9 different cell lines by using anti-HIBCH monoclonal antibody.



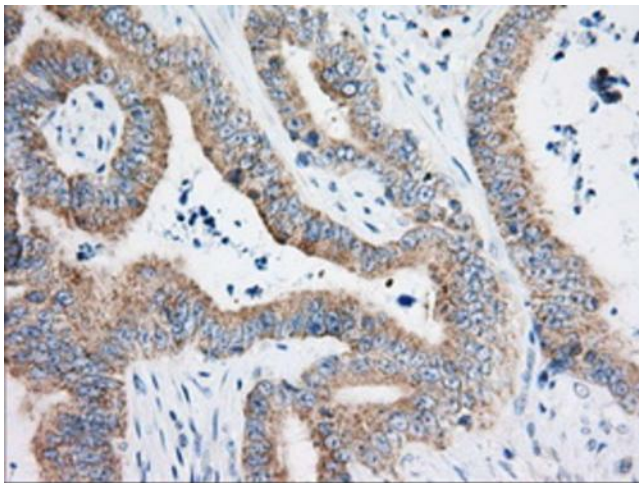
HEK293T cells were transfected with the pCMV6-ENTRY control (Cat# [PS100001], Left lane) or pCMV6-ENTRY HIBCH (Cat# [RC209814], Right lane) cDNA for 48 hrs and lysed. Equivalent amounts of cell lysates (5 ug per lane) were separated by SDS-PAGE and immunoblotted with anti-HIBCH(Cat# TA501317). Positive lysates [LY402324] (100ug) and [LC402324] (20ug) can be purchased separately from OriGene.



Immunohistochemical staining of paraffin-embedded Human liver tissue within the normal limits using anti-HIBCH mouse monoclonal antibody. Heat-induced epitope retrieval by EDTA solution buffer pH 8.0 at 120°C for 3 min.



Immunohistochemical staining of paraffin-embedded Human Kidney tissue within the normal limits using anti-HIBCH mouse monoclonal antibody. Heat-induced epitope retrieval by EDTA solution buffer pH 8.0 at 120°C for 3 min.



Immunohistochemical staining of paraffin-embedded Adenocarcinoma of Human colon tissue using anti-HIBCH mouse monoclonal antibody. Heat-induced epitope retrieval by EDTA solution buffer pH 8.0 at 120°C for 3 min.