

## Product datasheet for **TA501312BM**

### USP5 Mouse Monoclonal Antibody (HRP conjugated) [Clone ID: OTI1A8]

#### Product data:

Product Type:	Primary Antibodies
Clone Name:	OTI1A8
Applications:	IHC, WB
Recommended Dilution:	WB 1:2000, IHC 1:50
Reactivity:	Human, Mouse, Rat
Host:	Mouse
Isotype:	IgG1
Clonality:	Monoclonal
Immunogen:	Full length human recombinant protein of human USP5(NP_003472) produced in HEK293T cell.
Formulation:	PBS (pH 7.3) containing 1% BSA, 50% glycerol.
Concentration:	0.5 mg/ml
Purification:	Purified from mouse ascites fluids or tissue culture supernatant by affinity chromatography (protein A/G)
Conjugation:	HRP
Storage:	Store at -20°C as received.
Stability:	Stable for 12 months from date of receipt.
Predicted Protein Size:	93.1 kDa
Gene Name:	ubiquitin specific peptidase 5
Database Link:	<a href="#">NP_003472</a> <a href="#">Entrez Gene 297593 Rat</a> <a href="#">Entrez Gene 8078 Human</a> <a href="#">P45974</a>



[View online »](#)

**Background:**

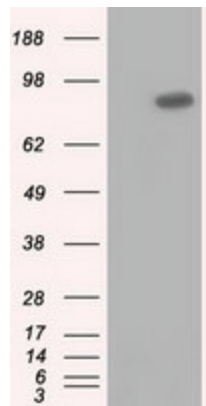
Ubiquitin (see MIM 191339)-dependent proteolysis is a complex pathway of protein metabolism implicated in such diverse cellular functions as maintenance of chromatin structure, receptor function, and degradation of abnormal proteins. A late step of the process involves disassembly of the polyubiquitin chains on degraded proteins into ubiquitin monomers. USP5 disassembles branched polyubiquitin chains by a sequential exo mechanism, starting at the proximal end of the chain (Wilkinson et al., 1995 [PubMed 7578059]). [supplied by OMIM]

**Synonyms:**

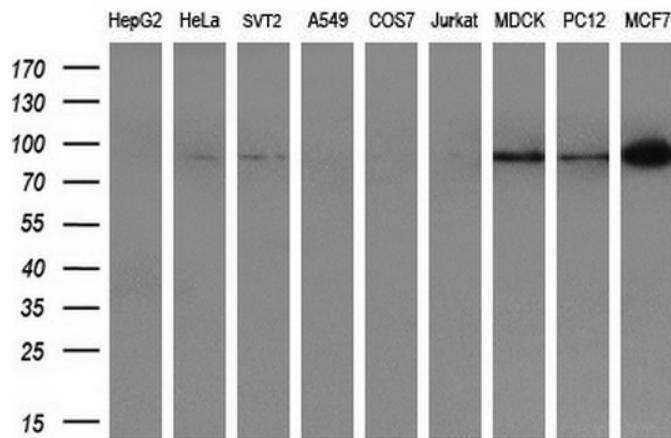
ISOT

**Protein Families:**

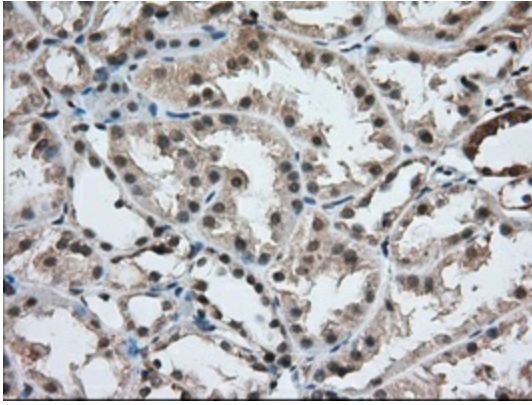
Druggable Genome, Protease

**Product images:**


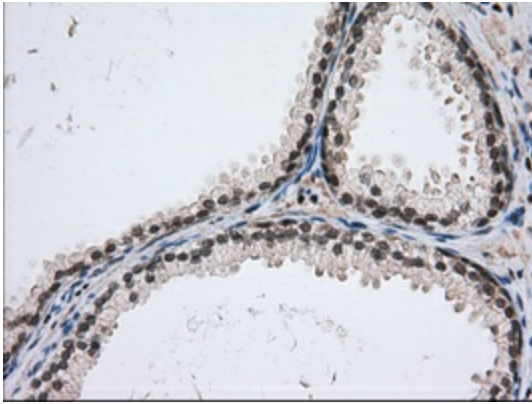
HEK293T cells were transfected with the pCMV6-ENTRY control (Left lane) or pCMV6-ENTRY USP5 ([RC202624], Right lane) cDNA for 48 hrs and lysed. Equivalent amounts of cell lysates (5 ug per lane) were separated by SDS-PAGE and immunoblotted with anti-USP5. Positive lysates [LY418652] (100ug) and [LC418652] (20ug) can be purchased separately from OriGene.



Western blot analysis of extracts (35ug) from 9 different cell lines by using anti-USP5 monoclonal antibody (HepG2: human; HeLa: human; SVT2: mouse; A549: human; COS7: monkey; Jurkat: human; MDCK: canine; PC12: rat; MCF7: human) (1:200).



Immunohistochemical staining of paraffin-embedded Human Kidney tissue within the normal limits using anti-USP5 mouse monoclonal antibody. (Heat-induced epitope retrieval by 10mM citric buffer, pH6.0, 100°C for 10min, [TA501312], Dilution 1:50)



Immunohistochemical staining of paraffin-embedded Human prostate tissue within the normal limits using anti-USP5 mouse monoclonal antibody. (Heat-induced epitope retrieval by 10mM citric buffer, pH6.0, 100°C for 10min, [TA501312], Dilution 1:50)