

Product datasheet for **TA501311S**

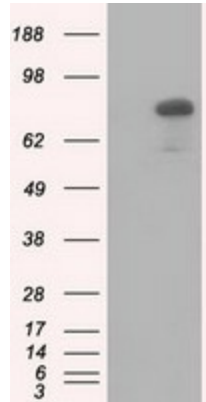
HID1 Mouse Monoclonal Antibody [Clone ID: OTI2F4]

Product data:

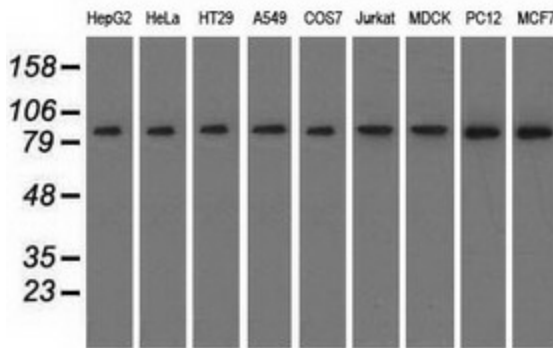
| | |
|--------------------------------|---|
| Product Type: | Primary Antibodies |
| Clone Name: | OTI2F4 |
| Applications: | FC, IF, IHC, WB |
| Recommended Dilution: | WB 1:1000~2000, IHC 1:50, IF 1:100, FLOW 1:100 |
| Reactivity: | Human, Dog, Rat, Monkey, Mouse |
| Host: | Mouse |
| Isotype: | IgG1 |
| Clonality: | Monoclonal |
| Immunogen: | Full length human recombinant protein of human C17orf28 (NP_085133) produced in HEK293T cell. |
| Formulation: | PBS (pH 7.3) containing 1% BSA, 50% glycerol and 0.02% sodium azide. |
| Concentration: | 1 mg/ml |
| Purification: | Purified from mouse ascites fluids or tissue culture supernatant by affinity chromatography (protein A/G) |
| Conjugation: | Unconjugated |
| Storage: | Store at -20°C as received. |
| Stability: | Stable for 12 months from date of receipt. |
| Predicted Protein Size: | 88.6 kDa |
| Gene Name: | HID1 domain containing |
| Database Link: | NP_085133 Entrez Gene 287822 Rat Entrez Gene 483305 Dog Entrez Gene 699954 Monkey Entrez Gene 283987 Human Q8IV36 |
| Synonyms: | C17orf28; DMC1; HID-1 |



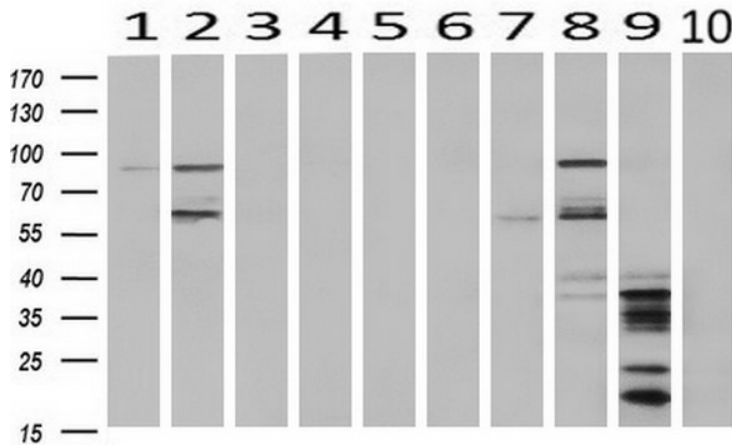
[View online »](#)

Product images:


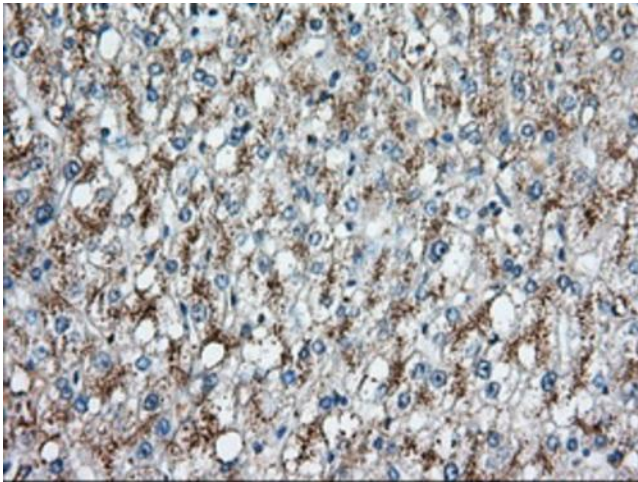
HEK293T cells were transfected with the pCMV6-ENTRY control (Cat# [PS100001], Left lane) or pCMV6-ENTRY C17orf28 (Cat# [RC206740], Right lane) cDNA for 48 hrs and lysed. Equivalent amounts of cell lysates (5 ug per lane) were separated by SDS-PAGE and immunoblotted with anti-C17orf28(Cat# [TA501311]). Positive lysates [LY403066] (100ug) and [LC403066] (20ug) can be purchased separately from OriGene.



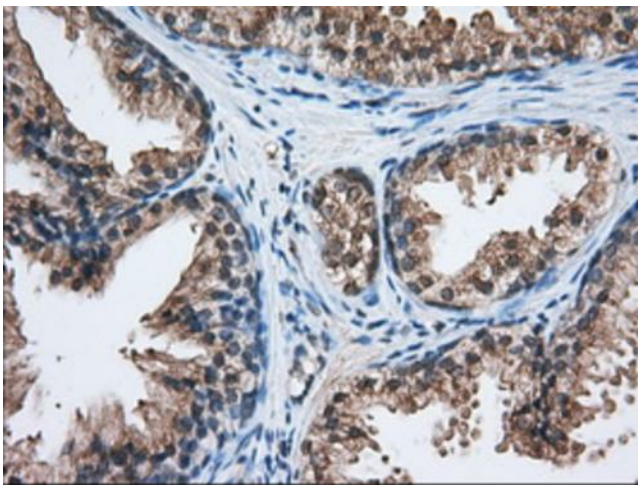
Western blot analysis of extracts (35ug) from 9 different cell lines by using anti-C17orf28 monoclonal antibody.



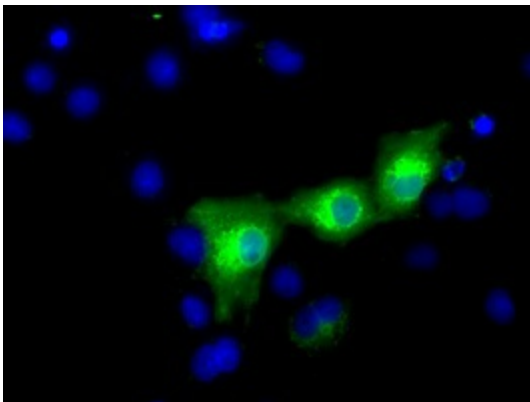
Western blot analysis of extracts (10ug) from 10 Human tissue by using anti-C17orf28 monoclonal antibody at 1:500 (1: Testis; 2: Omentum; 3: Uterus; 4: Breast; 5: Brain; 6: Liver; 7: Ovary; 8: Thyroid gland; 9: colon; 10: spleen).



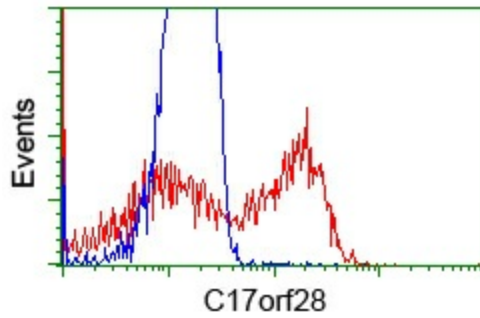
Immunohistochemical staining of paraffin-embedded Human liver tissue within the normal limits using anti-C17orf28 mouse monoclonal antibody. (Heat-induced epitope retrieval by 10mM citric buffer, pH6.0, 100°C for 10min, [TA501311], Dilution 1:50)



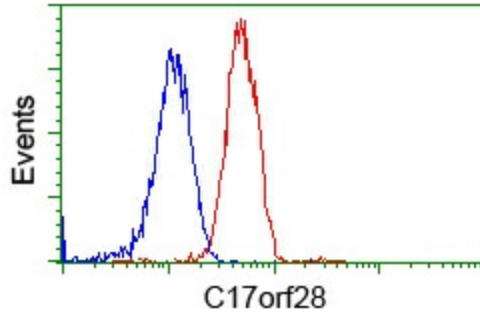
Immunohistochemical staining of paraffin-embedded Human prostate tissue within the normal limits using anti-C17orf28 mouse monoclonal antibody. (Heat-induced epitope retrieval by 10mM citric buffer, pH6.0, 100°C for 10min, [TA501311], Dilution 1:50)



Anti-C17orf28 mouse monoclonal antibody ([TA501311]) immunofluorescent staining of COS7 cells transiently transfected by pCMV6-ENTRY C17orf28 ([RC206740]).



HEK293T cells transfected with either [RC206740] overexpress plasmid (Red) or empty vector control plasmid (Blue) were immunostained by anti-C17orf28 antibody ([TA501311]), and then analyzed by flow cytometry.



Flow cytometric Analysis of Jurkat cells, using anti-C17orf28 antibody ([TA501311]), (Red), compared to a nonspecific negative control antibody (TA50011), (Blue).