

Product datasheet for **TA501311**

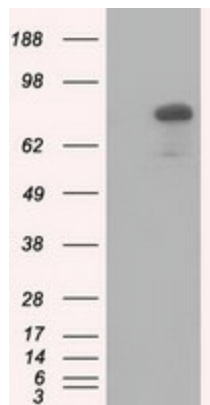
HID1 Mouse Monoclonal Antibody [Clone ID: OTI2F4]

Product data:

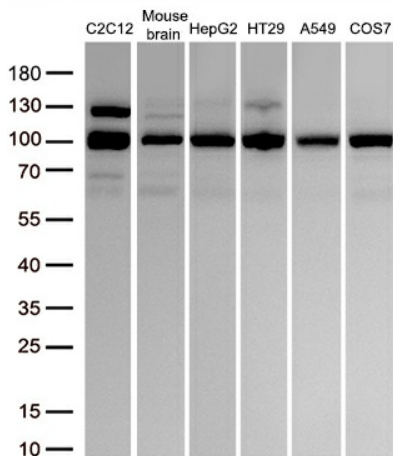
Product Type:	Primary Antibodies
Clone Name:	OTI2F4
Applications:	FC, IF, IHC, WB
Recommended Dilution:	WB 1:1000~2000, IHC 1:50, IF 1:100, FLOW 1:100
Reactivity:	Human, Dog, Rat, Monkey, Mouse
Host:	Mouse
Isotype:	IgG1
Clonality:	Monoclonal
Immunogen:	Full length human recombinant protein of human C17orf28 (NP_085133) produced in HEK293T cell.
Formulation:	PBS (pH 7.3) containing 1% BSA, 50% glycerol and 0.02% sodium azide.
Concentration:	1 mg/ml
Purification:	Purified from mouse ascites fluids or tissue culture supernatant by affinity chromatography (protein A/G)
Conjugation:	Unconjugated
Storage:	Store at -20°C as received.
Stability:	Stable for 12 months from date of receipt.
Predicted Protein Size:	88.6 kDa
Gene Name:	HID1 domain containing
Database Link:	NP_085133 Entrez Gene 287822 Rat Entrez Gene 483305 Dog Entrez Gene 699954 Monkey Entrez Gene 283987 Human Q8IV36
Synonyms:	C17orf28; DMC1; HID-1



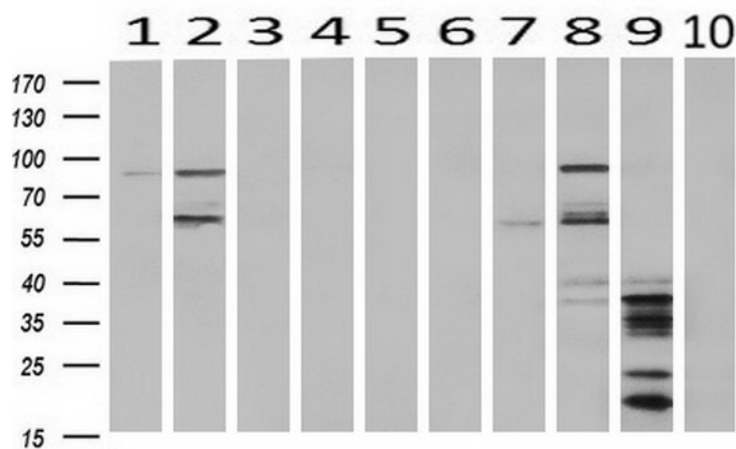
[View online »](#)

Product images:


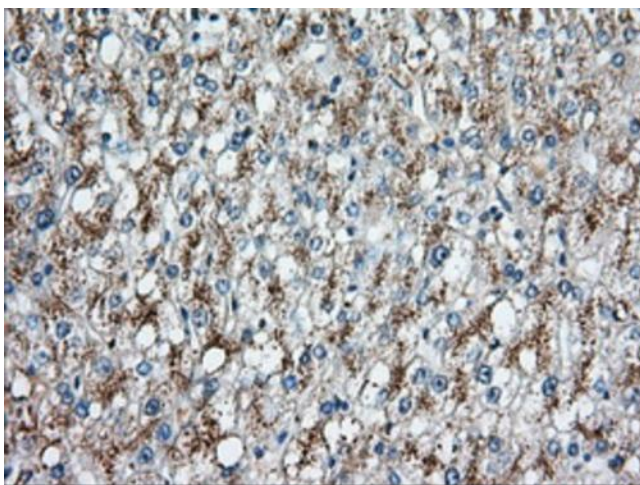
HEK293T cells were transfected with the pCMV6-ENTRY control (Cat# [PS100001], Left lane) or pCMV6-ENTRY C17orf28 (Cat# [RC206740], Right lane) cDNA for 48 hrs and lysed. Equivalent amounts of cell lysates (5 ug per lane) were separated by SDS-PAGE and immunoblotted with anti-C17orf28(Cat# TA501311). Positive lysates [LY403066] (100ug) and [LC403066] (20ug) can be purchased separately from OriGene.



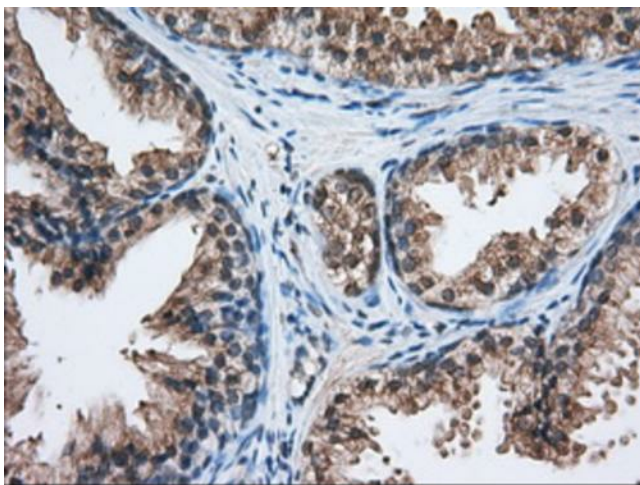
Western blot analysis of extracts (30ug per lane) from 5 cell lines lysates and Mouse brain tissue lysate by using anti-HID1 monoclonal antibody (TA501311, 1:2000).



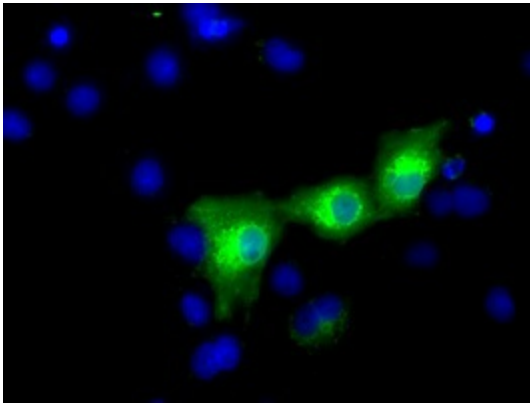
Western blot analysis of extracts (10ug) from 10 Human tissue by using anti-C17orf28 monoclonal antibody at 1:500 (1: Testis; 2: Omentum; 3: Uterus; 4: Breast; 5: Brain; 6: Liver; 7: Ovary; 8: Thyroid gland; 9: colon;10: spleen).



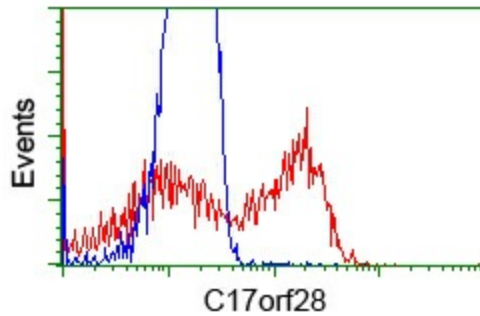
Immunohistochemical staining of paraffin-embedded Human liver tissue within the normal limits using anti-C17orf28 mouse monoclonal antibody. Heat-induced epitope retrieval by EDTA solution buffer pH 8.0 at 120°C for 3 min.



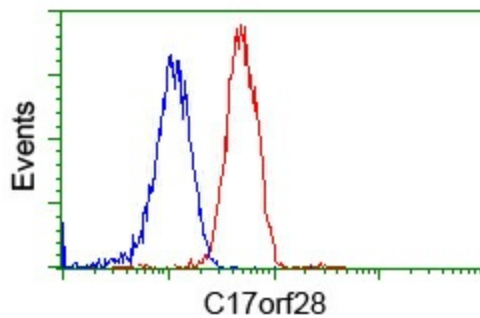
Immunohistochemical staining of paraffin-embedded Human prostate tissue within the normal limits using anti-C17orf28 mouse monoclonal antibody. Heat-induced epitope retrieval by EDTA solution buffer pH 8.0 at 120°C for 3 min.



Anti-C17orf28 mouse monoclonal antibody (TA501311) immunofluorescent staining of COS7 cells transiently transfected by pCMV6-ENTRY C17orf28 ([RC206740]).



HEK293T cells transfected with either [RC206740] overexpress plasmid (Red) or empty vector control plasmid (Blue) were immunostained by anti-C17orf28 antibody (TA501311), and then analyzed by flow cytometry.



Flow cytometric Analysis of Jurkat cells, using anti-C17orf28 antibody (TA501311), (Red), compared to a nonspecific negative control antibody (TA50011), (Blue).