

Product datasheet for **TA501295S**

FHL1 Mouse Monoclonal Antibody [Clone ID: OTI1D6]

Product data:

Product Type:	Primary Antibodies
Clone Name:	OTI1D6
Applications:	FC, WB
Recommended Dilution:	WB 1:1000~2000, FLOW 1:100
Reactivity:	Human, Mouse, Rat
Host:	Mouse
Isotype:	IgG1
Clonality:	Monoclonal
Immunogen:	Full length human recombinant protein of human FHL1 (NP_001440) produced in HEK293T cell.
Formulation:	PBS (pH 7.3) containing 1% BSA, 50% glycerol and 0.02% sodium azide.
Concentration:	0.89 mg/ml
Purification:	Purified from mouse ascites fluids or tissue culture supernatant by affinity chromatography (protein A/G)
Conjugation:	Unconjugated
Storage:	Store at -20°C as received.
Stability:	Stable for 12 months from date of receipt.
Predicted Protein Size:	31.7 kDa
Gene Name:	four and a half LIM domains 1
Database Link:	NP_001440 Entrez Gene 14199 Mouse Entrez Gene 25177 Rat Entrez Gene 2273 Human Q13642



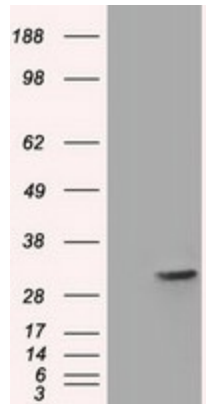
[View online »](#)

Background:

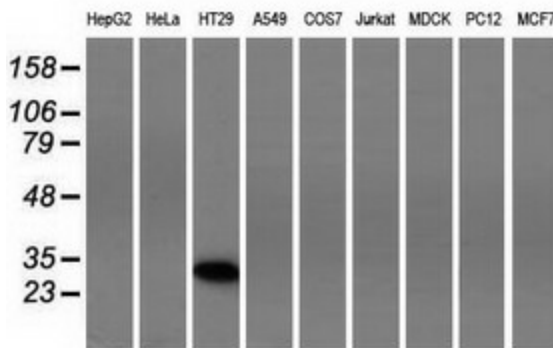
This gene encodes a member of the four-and-a-half-LIM-only protein family. Family members contain two highly conserved, tandemly arranged, zinc finger domains with four highly conserved cysteines binding a zinc atom in each zinc finger. Expression of these family members occurs in a cell- and tissue-specific mode and these proteins are involved in many cellular processes. Mutations in this gene have been found in patients with Emery-Dreifuss muscular dystrophy. Multiple alternately spliced transcript variants which encode different protein isoforms have been described.

Synonyms:

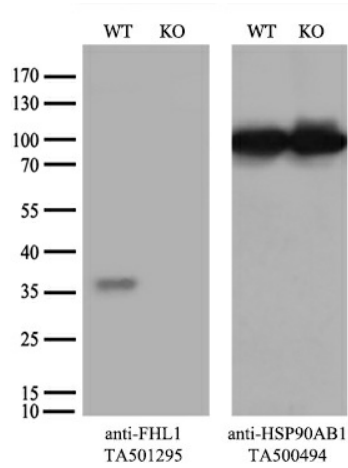
FHL-1; FHL1A; FHL1B; FLH1A; KYOT; SLIM; SLIM-1; SLIM1; SLIMMER; XMPMA

Product images:


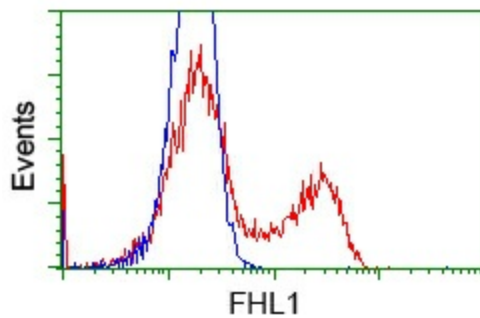
HEK293T cells were transfected with the pCMV6-ENTRY control (Left lane) or pCMV6-ENTRY FHL1 [RC203478], Right lane) cDNA for 48 hrs and lysed. Equivalent amounts of cell lysates (5 ug per lane) were separated by SDS-PAGE and immunoblotted with anti-FHL1. Positive lysates [LY400563] (100ug) and [LC400563] (20ug) can be purchased separately from OriGene.



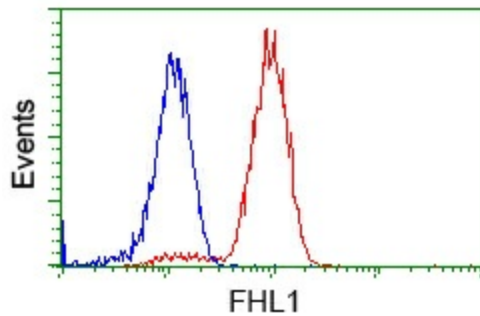
Western blot analysis of extracts (35ug) from 9 different cell lines by using anti-FHL1 monoclonal antibody.



Equivalent amounts of cell lysates (10 ug per lane) of wild-type HeLa cells (WT, Cat# LC810HELA) and FHL1-Knockout HeLa cells (KO, Cat# [LC835844]) were separated by SDS-PAGE and immunoblotted with anti-FHL1 monoclonal antibody [TA501295] (1:200). Then the blotted membrane was stripped and reprobed with anti-HSP90 antibody as a loading control.



HEK293T cells transfected with either [RC203478] overexpress plasmid (Red) or empty vector control plasmid (Blue) were immunostained by anti-FHL1 antibody ([TA501295]), and then analyzed by flow cytometry.



Flow cytometric Analysis of Jurkat cells, using anti-FHL1 antibody ([TA501295]), (Red), compared to a nonspecific negative control antibody (TA50011), (Blue).