

## Product datasheet for **TA501293S**

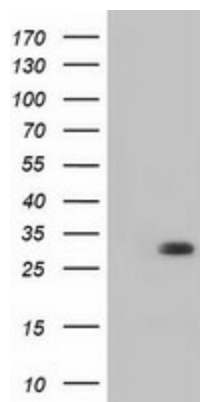
### **BDH2 Mouse Monoclonal Antibody [Clone ID: OTI2G1]**

#### **Product data:**

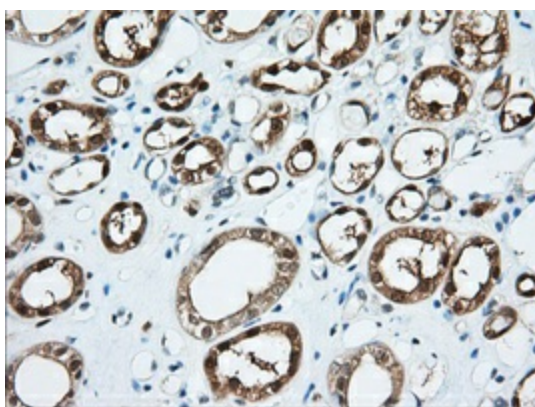
<b>Product Type:</b>	Primary Antibodies
<b>Clone Name:</b>	OTI2G1
<b>Applications:</b>	FC, IF, IHC, WB
<b>Recommended Dilution:</b>	WB 1:2000, IHC 1:50, IF 1:100, FLOW 1:100
<b>Reactivity:</b>	Human, Mouse, Rat
<b>Host:</b>	Mouse
<b>Isotype:</b>	IgG1
<b>Clonality:</b>	Monoclonal
<b>Immunogen:</b>	Full length human recombinant protein of human BDH2(NP_064524) produced in HEK293T cell.
<b>Formulation:</b>	PBS (pH 7.3) containing 1% BSA, 50% glycerol and 0.02% sodium azide.
<b>Concentration:</b>	0.66 mg/ml
<b>Purification:</b>	Purified from mouse ascites fluids or tissue culture supernatant by affinity chromatography (protein A/G)
<b>Conjugation:</b>	Unconjugated
<b>Storage:</b>	Store at -20°C as received.
<b>Stability:</b>	Stable for 12 months from date of receipt.
<b>Predicted Protein Size:</b>	26.5 kDa
<b>Gene Name:</b>	3-hydroxybutyrate dehydrogenase 2
<b>Database Link:</b>	<a href="#">NP_064524</a> <a href="#">Entrez Gene 69772 Mouse</a> <a href="#">Entrez Gene 295458 Rat</a> <a href="#">Entrez Gene 56898 Human</a> <a href="#">Q9BUT1</a>
<b>Synonyms:</b>	DHRS6; EFA6R; PRO20933; SDR15C1; UCPA-OR; UNQ6308
<b>Protein Families:</b>	Druggable Genome
<b>Protein Pathways:</b>	Butanoate metabolism, Metabolic pathways, Synthesis and degradation of ketone bodies



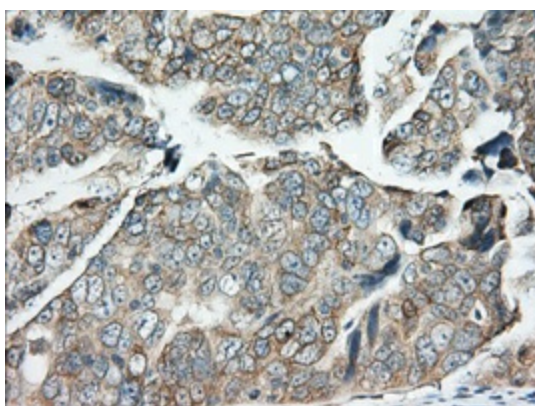
[View online »](#)

**Product images:**

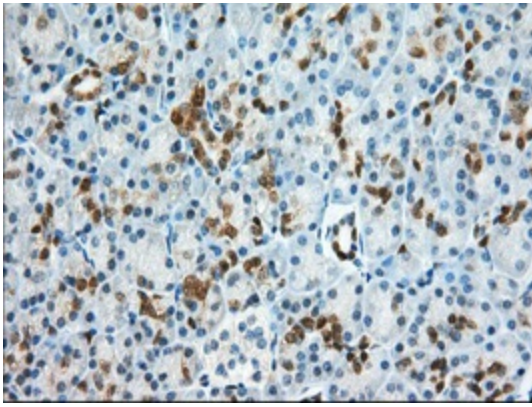
HEK293T cells were transfected with the pCMV6-ENTRY control (Left lane) or pCMV6-ENTRY BDH2 ([RC210586], Right lane) cDNA for 48 hrs and lysed. Equivalent amounts of cell lysates (5 ug per lane) were separated by SDS-PAGE and immunoblotted with anti-BDH2. Positive lysates [LY402755] (100ug) and [LC402755] (20ug) can be purchased separately from OriGene.



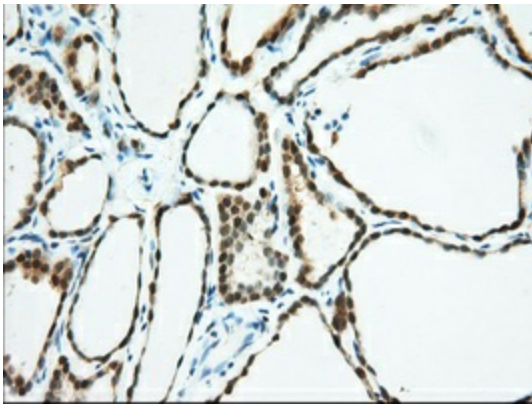
Immunohistochemical staining of paraffin-embedded Human Kidney tissue within the normal limits using anti-BDH2 mouse monoclonal antibody. (Heat-induced epitope retrieval by 10mM citric buffer, pH6.0, 100°C for 10min, [TA501293], Dilution 1:50)



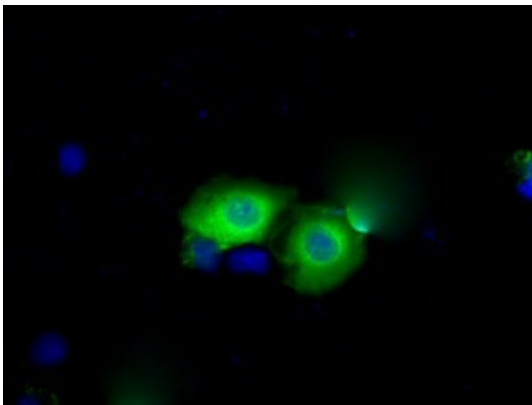
Immunohistochemical staining of paraffin-embedded Adenocarcinoma of Human ovary tissue using anti-BDH2 mouse monoclonal antibody. (Heat-induced epitope retrieval by 10mM citric buffer, pH6.0, 100°C for 10min, [TA501293], Dilution 1:50)



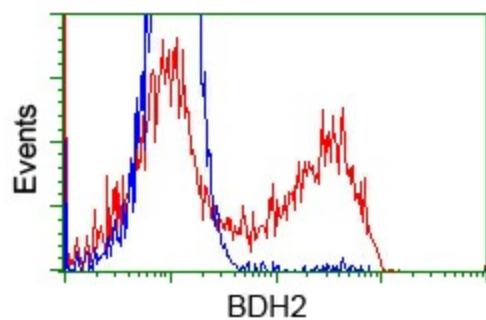
Immunohistochemical staining of paraffin-embedded Human pancreas tissue within the normal limits using anti-BDH2 mouse monoclonal antibody. (Heat-induced epitope retrieval by 10mM citric buffer, pH6.0, 100°C for 10min, [TA501293], Dilution 1:50)



Immunohistochemical staining of paraffin-embedded Human thyroid tissue within the normal limits using anti-BDH2 mouse monoclonal antibody. (Heat-induced epitope retrieval by 10mM citric buffer, pH6.0, 100°C for 10min, [TA501293], Dilution 1:50)



Anti-BDH2 mouse monoclonal antibody ([TA501293]) immunofluorescent staining of COS7 cells transiently transfected by pCMV6-ENTRY BDH2 ([RC210586]).



HEK293T cells transfected with either [RC210586] overexpress plasmid (Red) or empty vector control plasmid (Blue) were immunostained by anti-BDH2 antibody ([TA501293]), and then analyzed by flow cytometry.