

Product datasheet for **TA501293**

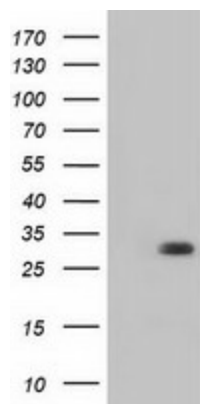
BDH2 Mouse Monoclonal Antibody [Clone ID: OTI2G1]

Product data:

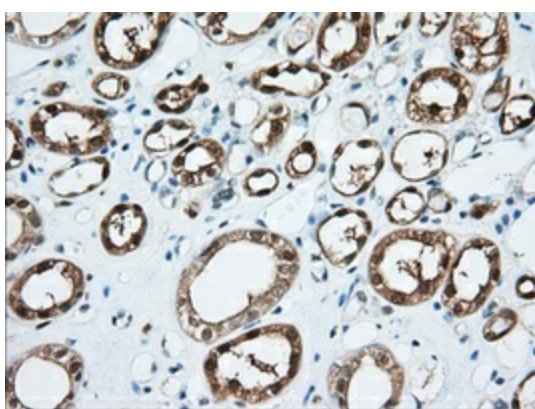
Product Type:	Primary Antibodies
Clone Name:	OTI2G1
Applications:	FC, IF, IHC, WB
Recommended Dilution:	WB 1:2000, IHC 1:50, IF 1:100, FLOW 1:100
Reactivity:	Human, Mouse, Rat
Host:	Mouse
Isotype:	IgG1
Clonality:	Monoclonal
Immunogen:	Full length human recombinant protein of human BDH2(NP_064524) produced in HEK293T cell.
Formulation:	PBS (pH 7.3) containing 1% BSA, 50% glycerol and 0.02% sodium azide.
Concentration:	0.66 mg/ml
Purification:	Purified from mouse ascites fluids or tissue culture supernatant by affinity chromatography (protein A/G)
Conjugation:	Unconjugated
Storage:	Store at -20°C as received.
Stability:	Stable for 12 months from date of receipt.
Predicted Protein Size:	26.5 kDa
Gene Name:	3-hydroxybutyrate dehydrogenase 2
Database Link:	NP_064524 Entrez Gene 69772 Mouse Entrez Gene 295458 Rat Entrez Gene 56898 Human Q9BUT1
Synonyms:	DHRS6; EFA6R; PRO20933; SDR15C1; UCPA-OR; UNQ6308
Protein Families:	Druggable Genome
Protein Pathways:	Butanoate metabolism, Metabolic pathways, Synthesis and degradation of ketone bodies



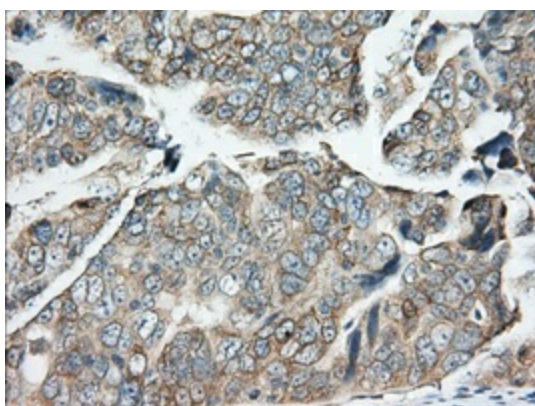
[View online »](#)

Product images:

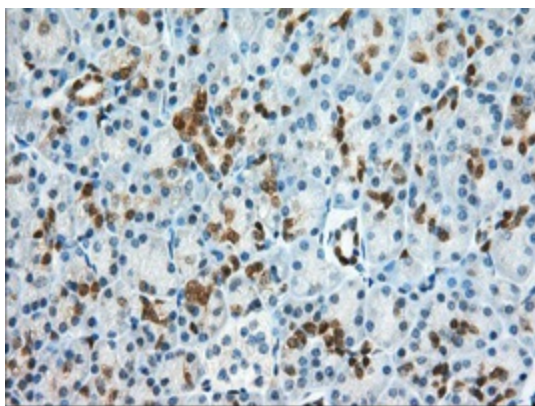
HEK293T cells were transfected with the pCMV6-ENTRY control (Left lane) or pCMV6-ENTRY BDH2 ([RC210586], Right lane) cDNA for 48 hrs and lysed. Equivalent amounts of cell lysates (5 ug per lane) were separated by SDS-PAGE and immunoblotted with anti-BDH2. Positive lysates [LY402755] (100ug) and [LC402755] (20ug) can be purchased separately from OriGene.



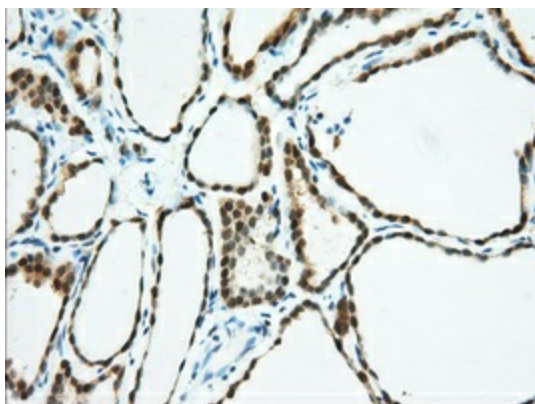
Immunohistochemical staining of paraffin-embedded Human Kidney tissue within the normal limits using anti-BDH2 mouse monoclonal antibody. (Heat-induced epitope retrieval by 10mM citric buffer, pH6.0, 100°C for 10min, TA501293, Dilution 1:50)



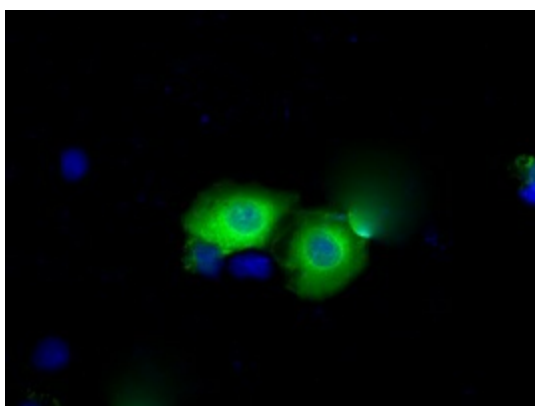
Immunohistochemical staining of paraffin-embedded Adenocarcinoma of Human ovary tissue using anti-BDH2 mouse monoclonal antibody. (Heat-induced epitope retrieval by 10mM citric buffer, pH6.0, 100°C for 10min, TA501293, Dilution 1:50)



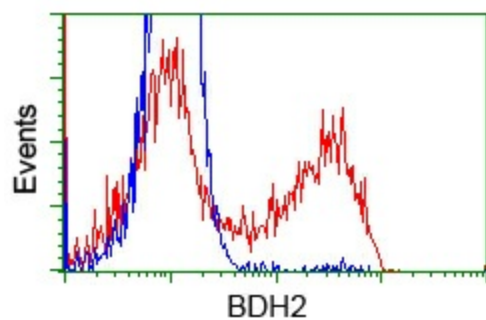
Immunohistochemical staining of paraffin-embedded Human pancreas tissue within the normal limits using anti-BDH2 mouse monoclonal antibody. (Heat-induced epitope retrieval by 10mM citric buffer, pH6.0, 100°C for 10min, TA501293, Dilution 1:50)



Immunohistochemical staining of paraffin-embedded Human thyroid tissue within the normal limits using anti-BDH2 mouse monoclonal antibody. (Heat-induced epitope retrieval by 10mM citric buffer, pH6.0, 100°C for 10min, TA501293, Dilution 1:50)



Anti-BDH2 mouse monoclonal antibody (TA501293) immunofluorescent staining of COS7 cells transiently transfected by pCMV6-ENTRY BDH2 ([RC210586]).



HEK293T cells transfected with either [RC210586] overexpress plasmid (Red) or empty vector control plasmid (Blue) were immunostained by anti-BDH2 antibody (TA501293), and then analyzed by flow cytometry.