

## Product datasheet for **TA501291**

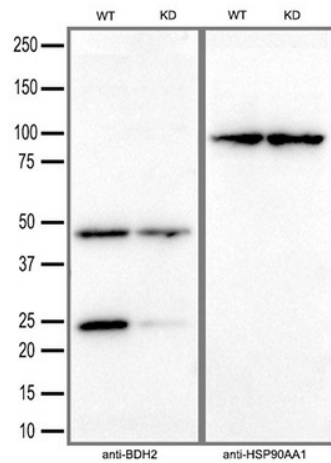
### **BDH2 Mouse Monoclonal Antibody [Clone ID: OTI4G4]**

#### **Product data:**

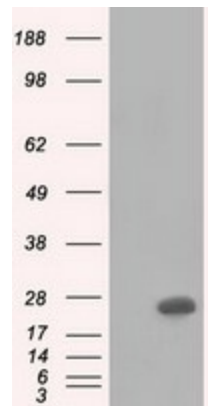
<b>Product Type:</b>	Primary Antibodies
<b>Clone Name:</b>	OTI4G4
<b>Applications:</b>	FC, IF, IHC, WB
<b>Recommended Dilution:</b>	WB 1:2000, IHC 1:50, IF 1:100, FLOW 1:100
<b>Reactivity:</b>	Human, Mouse, Rat
<b>Host:</b>	Mouse
<b>Isotype:</b>	IgG2a
<b>Clonality:</b>	Monoclonal
<b>Immunogen:</b>	Full length human recombinant protein of human BDH2(NP_064524) produced in HEK293T cell.
<b>Formulation:</b>	PBS (pH 7.3) containing 1% BSA, 50% glycerol and 0.02% sodium azide.
<b>Concentration:</b>	0.73 mg/ml
<b>Purification:</b>	Purified from mouse ascites fluids or tissue culture supernatant by affinity chromatography (protein A/G)
<b>Conjugation:</b>	Unconjugated
<b>Storage:</b>	Store at -20°C as received.
<b>Stability:</b>	Stable for 12 months from date of receipt.
<b>Predicted Protein Size:</b>	26.5 kDa
<b>Gene Name:</b>	3-hydroxybutyrate dehydrogenase 2
<b>Database Link:</b>	<a href="#">NP_064524</a> <a href="#">Entrez Gene 69772 Mouse</a> <a href="#">Entrez Gene 295458 Rat</a> <a href="#">Entrez Gene 56898 Human</a> <a href="#">Q9BUT1</a>
<b>Synonyms:</b>	DHRS6; EFA6R; PRO20933; SDR15C1; UCPA-OR; UNQ6308
<b>Protein Families:</b>	Druggable Genome
<b>Protein Pathways:</b>	Butanoate metabolism, Metabolic pathways, Synthesis and degradation of ketone bodies



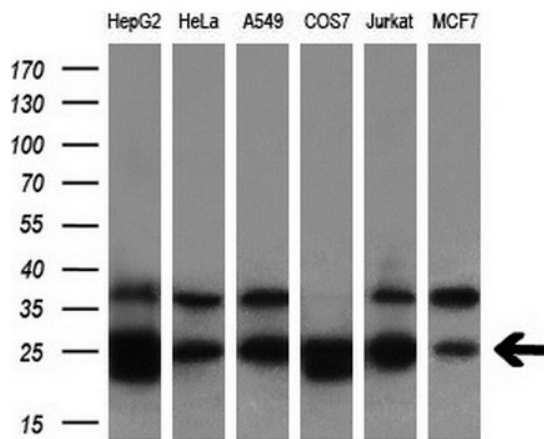
[View online »](#)

**Product images:**


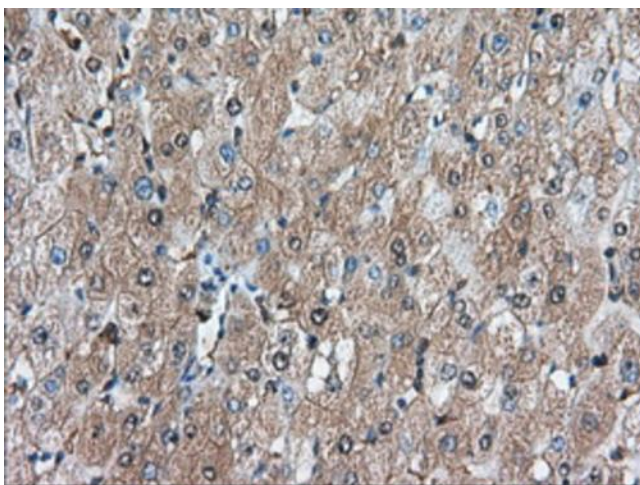
Equivalent amounts of cell lysates (30 ug per lane) of wild-type HeLa cells (WT) and BDH2-Knockdown HeLa cells (KD) were separated by SDS-PAGE and immunoblotted with anti-BDH2 monoclonal antibody TA501291 (1:5000). Then the blotted membrane was stripped and reprobed with anti-HSP90AA1 antibody as a loading control.



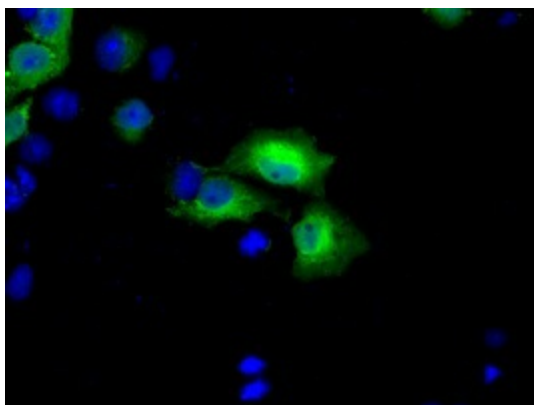
HEK293T cells were transfected with the pCMV6-ENTRY control (Cat# [PS100001], Left lane) or pCMV6-ENTRY BDH2 (Cat# [RC210586], Right lane) cDNA for 48 hrs and lysed. Equivalent amounts of cell lysates (5 ug per lane) were separated by SDS-PAGE and immunoblotted with anti-BDH2(Cat# TA501291). Positive lysates [LY402755] (100ug) and [LC402755] (20ug) can be purchased separately from OriGene.



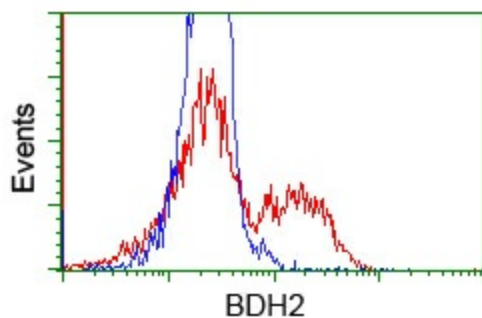
Western blot analysis of extracts (10ug) from 6 different cell lines by using anti-BDH2 monoclonal antibody (1:200).



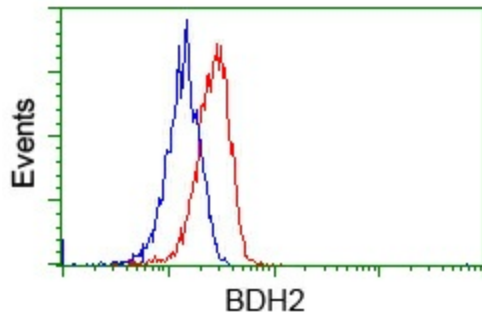
Immunohistochemical staining of paraffin-embedded Human liver tissue within the normal limits using anti-BDH2 mouse monoclonal antibody. Heat-induced epitope retrieval by EDTA solution buffer pH 8.0 at 120°C for 3 min.



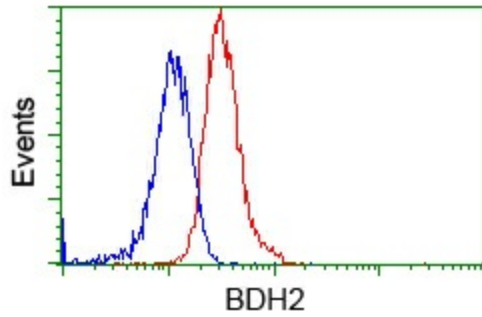
Anti-BDH2 mouse monoclonal antibody (TA501291) immunofluorescent staining of COS7 cells transiently transfected by pCMV6-ENTRY BDH2 ([RC210586]).



HEK293T cells transfected with either [RC210586] overexpress plasmid (Red) or empty vector control plasmid (Blue) were immunostained by anti-BDH2 antibody (TA501291), and then analyzed by flow cytometry.



Flow cytometric Analysis of HeLa cells, using anti-BDH2 antibody (TA501291), (Red), compared to a nonspecific negative control antibody (TA50011), (Blue).



Flow cytometric Analysis of Jurkat cells, using anti-BDH2 antibody (TA501291), (Red), compared to a nonspecific negative control antibody (TA50011), (Blue).