

## Product datasheet for **TA501282S**

### **ketohexokinase (KHK) Mouse Monoclonal Antibody [Clone ID: OTI4H3]**

#### **Product data:**

<b>Product Type:</b>	Primary Antibodies
<b>Clone Name:</b>	OTI4H3
<b>Applications:</b>	FC, IF, WB
<b>Recommended Dilution:</b>	WB 1:2000, IF 1:100, FLOW 1:100
<b>Reactivity:</b>	Human
<b>Host:</b>	Mouse
<b>Isotype:</b>	IgG1
<b>Clonality:</b>	Monoclonal
<b>Immunogen:</b>	Full length human recombinant protein of human KHK(NP_000212) produced in HEK293T cell.
<b>Formulation:</b>	PBS (pH 7.3) containing 1% BSA, 50% glycerol and 0.02% sodium azide.
<b>Concentration:</b>	0.5 mg/ml
<b>Purification:</b>	Purified from mouse ascites fluids or tissue culture supernatant by affinity chromatography (protein A/G)
<b>Conjugation:</b>	Unconjugated
<b>Storage:</b>	Store at -20°C as received.
<b>Stability:</b>	Stable for 12 months from date of receipt.
<b>Predicted Protein Size:</b>	32.5 kDa
<b>Gene Name:</b>	ketohexokinase
<b>Database Link:</b>	<a href="#">NP_000212</a> <a href="#">Entrez Gene 3795 Human</a> <a href="#">P50053</a>
<b>Background:</b>	This gene encodes ketohexokinase that catalyzes conversion of fructose to fructose-1-phosphate. The product of this gene is the first enzyme with a specialized pathway that catabolizes dietary fructose. Alternatively spliced transcript variants encoding different isoforms have been identified. [provided by RefSeq]
<b>Synonyms:</b>	ketohexokinase; ketohexokinase (fructokinase)

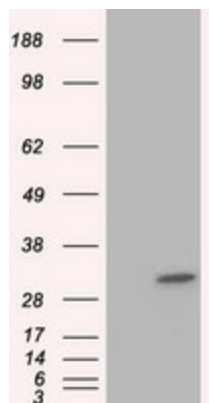


[View online »](#)

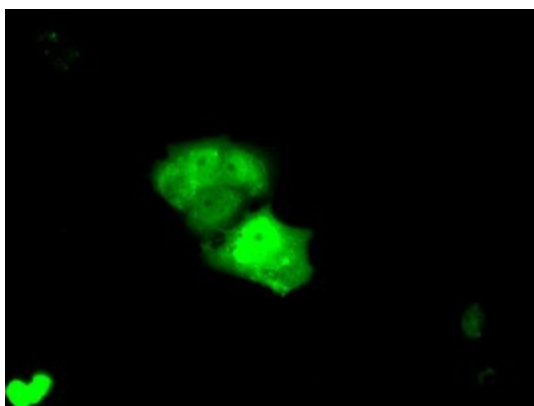
**Protein Families:** Druggable Genome

**Protein Pathways:** Fructose and mannose metabolism, Metabolic pathways

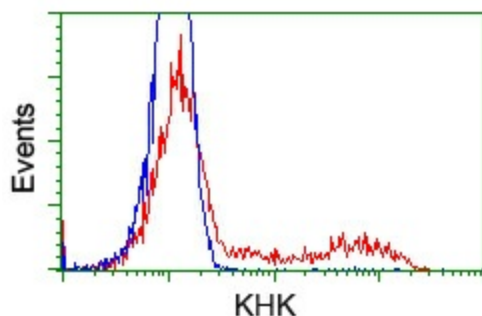
**Product images:**



HEK293T cells were transfected with the pCMV6-ENTRY control (Left lane) or pCMV6-ENTRY KHK ([RC202424], Right lane) cDNA for 48 hrs and lysed. Equivalent amounts of cell lysates (5 ug per lane) were separated by SDS-PAGE and immunoblotted with anti-KHK. Positive lysates [LY400082] (100ug) and [LC400082] (20ug) can be purchased separately from OriGene.



Anti-KHK mouse monoclonal antibody ([TA501282]) immunofluorescent staining of COS7 cells transiently transfected by pCMV6-ENTRY KHK ([RC202424]).



HEK293T cells transfected with either [RC202424] overexpress plasmid (Red) or empty vector control plasmid (Blue) were immunostained by anti-KHK antibody ([TA501282]), and then analyzed by flow cytometry.