

## Product datasheet for **TA501280BM**

### **FHL1 Mouse Monoclonal Antibody (HRP conjugated) [Clone ID: OTI2E1]**

#### **Product data:**

Product Type:	Primary Antibodies
Clone Name:	OTI2E1
Applications:	FC, IF, WB
Recommended Dilution:	IF 1:100, FLOW
Reactivity:	Human, Mouse, Rat
Host:	Mouse
Isotype:	IgG1
Clonality:	Monoclonal
Immunogen:	Full length human recombinant protein of human FHL1 (NP_001440) produced in HEK293T cell.
Formulation:	PBS (pH 7.3) containing 1% BSA, 50% glycerol.
Concentration:	0.5 mg/ml
Purification:	Purified from mouse ascites fluids or tissue culture supernatant by affinity chromatography (protein A/G)
Conjugation:	HRP
Storage:	Store at -20°C as received.
Stability:	Stable for 12 months from date of receipt.
Predicted Protein Size:	31.7 kDa
Gene Name:	four and a half LIM domains 1
Database Link:	<a href="#">NP_001440</a> <a href="#">Entrez Gene 14199 Mouse</a> <a href="#">Entrez Gene 25177 Rat</a> <a href="#">Entrez Gene 2273 Human</a> <a href="#">Q13642</a>



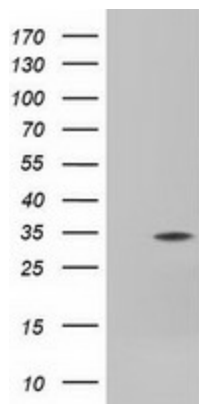
[View online »](#)

**Background:**

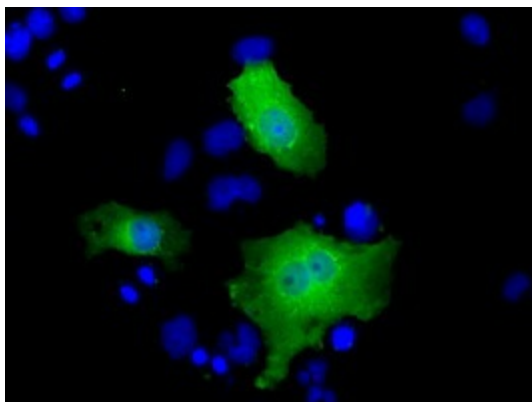
This gene encodes a member of the four-and-a-half-LIM-only protein family. Family members contain two highly conserved, tandemly arranged, zinc finger domains with four highly conserved cysteines binding a zinc atom in each zinc finger. Expression of these family members occurs in a cell- and tissue-specific mode and these proteins are involved in many cellular processes. Mutations in this gene have been found in patients with Emery-Dreifuss muscular dystrophy. Multiple alternately spliced transcript variants which encode different protein isoforms have been described.

**Synonyms:**

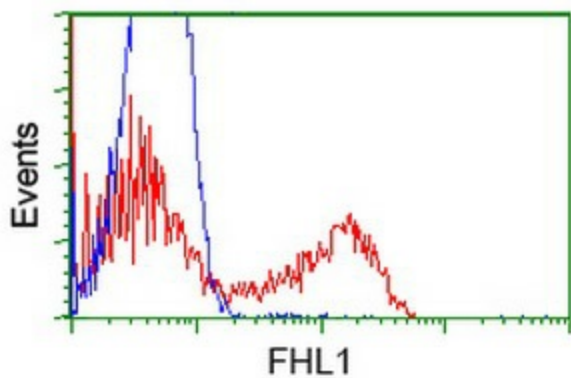
FHL-1; FHL1A; FHL1B; FLH1A; KYOT; SLIM; SLIM-1; SLIM1; SLIMMER; XMPMA

**Product images:**

HEK293T cells were transfected with the pCMV6-ENTRY control (Left lane) or pCMV6-ENTRY FHL1 ([RC203478], Right lane) cDNA for 48 hrs and lysed. Equivalent amounts of cell lysates (5 ug per lane) were separated by SDS-PAGE and immunoblotted with anti-FHL1. Positive lysates [LY400563] (100ug) and [LC400563] (20ug) can be purchased separately from OriGene.



Anti-FHL1 mouse monoclonal antibody ([TA501280]) immunofluorescent staining of COS7 cells transiently transfected by pCMV6-ENTRY FHL1 ([RC203478]).



HEK293T cells transfected with either [RC203478] overexpress plasmid (Red) or empty vector control plasmid (Blue) were immunostained by anti-FHL1 antibody ([TA501280]), and then analyzed by flow cytometry.