

## Product datasheet for **TA501278BM**

### **NXNL2 Mouse Monoclonal Antibody (HRP conjugated) [Clone ID: OTI2H8]**

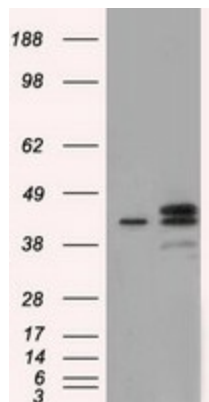
#### **Product data:**

Product Type:	Primary Antibodies
Clone Name:	OTI2H8
Applications:	FC, IF, IHC, WB
Recommended Dilution:	WB 1:1000~2000, IHC 1:50, IF 1:100, FLOW 1:100
Reactivity:	Human, Monkey, Mouse
Host:	Mouse
Isotype:	IgG1
Clonality:	Monoclonal
Immunogen:	Full length human recombinant protein of human NXNL2 (NP_660326) produced in HEK293T cell.
Formulation:	PBS (pH 7.3) containing 1% BSA, 50% glycerol.
Concentration:	0.5 mg/ml
Purification:	Purified from mouse ascites fluids or tissue culture supernatant by affinity chromatography (protein A/G)
Conjugation:	HRP
Storage:	Store at -20°C as received.
Stability:	Stable for 12 months from date of receipt.
Predicted Protein Size:	14.5 kDa
Gene Name:	nucleoredoxin like 2
Database Link:	<a href="#">NP_660326</a> <a href="#">Entrez Gene 75124 Mouse</a> <a href="#">Entrez Gene 698533 Monkey</a> <a href="#">Entrez Gene 158046 Human</a> <a href="#">Q5VZ03</a>
Synonyms:	C9orf121; RDCVF2

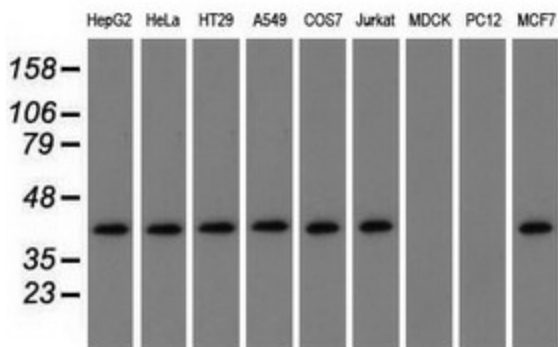


[View online »](#)

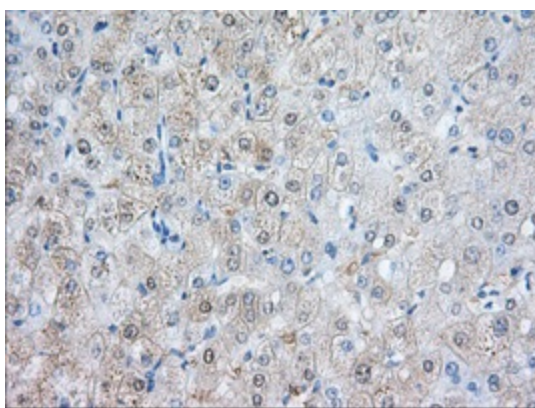
**Product images:**



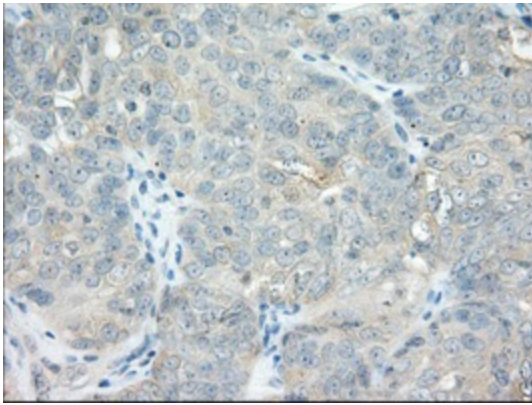
HEK293T cells were transfected with the pCMV6-ENTRY control (Left lane) or pCMV6-ENTRY NXNL2 ([RC205425], Right lane) cDNA for 48 hrs and lysed. Equivalent amounts of cell lysates (5 ug per lane) were separated by SDS-PAGE and immunoblotted with anti-NXNL2. Positive lysates [LY408006] (100ug) and [LC408006] (20ug) can be purchased separately from OriGene.



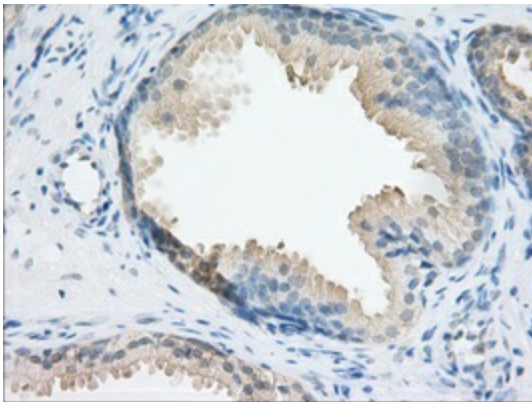
Western blot analysis of extracts (35ug) from 9 different cell lines by using anti-NXNL2 monoclonal antibody.



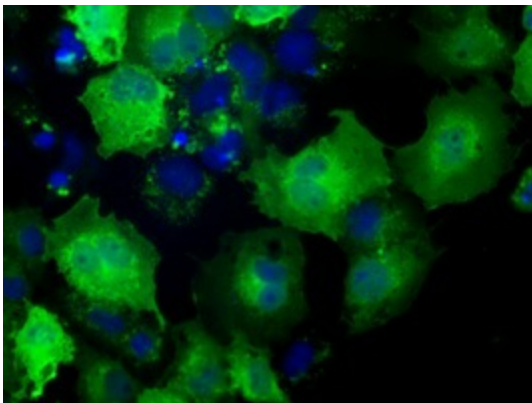
Immunohistochemical staining of paraffin-embedded Human liver tissue within the normal limits using anti-NXNL2 mouse monoclonal antibody. (Heat-induced epitope retrieval by 10mM citric buffer, pH6.0, 100°C for 10min, [TA501278], Dilution 1:50)



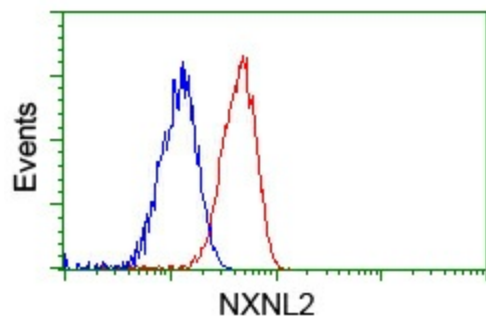
Immunohistochemical staining of paraffin-embedded Adenocarcinoma of Human ovary tissue using anti-NXNL2 mouse monoclonal antibody. (Heat-induced epitope retrieval by 10mM citric buffer, pH6.0, 100°C for 10min, [TA501278], Dilution 1:50)



Immunohistochemical staining of paraffin-embedded Human prostate tissue within the normal limits using anti-NXNL2 mouse monoclonal antibody. (Heat-induced epitope retrieval by 10mM citric buffer, pH6.0, 100°C for 10min, [TA501278], Dilution 1:50)



Anti-NXNL2 mouse monoclonal antibody ([TA501278]) immunofluorescent staining of COS7 cells transiently transfected by pCMV6-ENTRY NXNL2 ([RC205425]).



Flow cytometric Analysis of Jurkat cells, using anti-NXNL2 antibody ([TA501278]), (Red), compared to a nonspecific negative control antibody (TA50011), (Blue).