

Product datasheet for **TA501275AM**

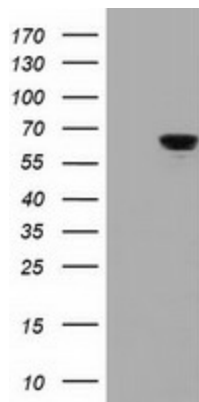
IGF2BP2 Mouse Monoclonal Antibody (Biotin conjugated) [Clone ID: OTI4D10]

Product data:

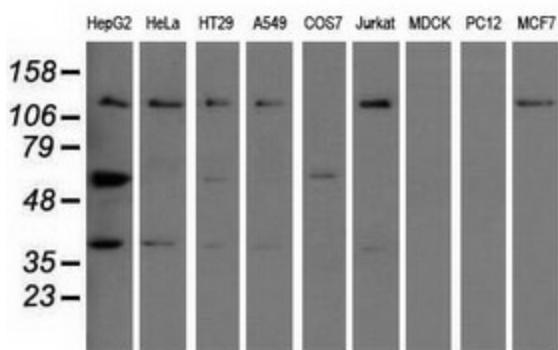
Product Type:	Primary Antibodies
Clone Name:	OTI4D10
Applications:	FC, IF, WB
Recommended Dilution:	IF 1:100, FLOW 1:100
Reactivity:	Human, Monkey, Mouse, Rat
Host:	Mouse
Isotype:	IgG1
Clonality:	Monoclonal
Immunogen:	Full length human recombinant protein of human IGF2BP2 (NP_006333) produced in HEK293T cell.
Concentration:	0.5 mg/ml
Purification:	Purified from mouse ascites fluids or tissue culture supernatant by affinity chromatography (protein A/G)
Conjugation:	Biotin
Storage:	Store at -20°C as received.
Stability:	Stable for 12 months from date of receipt.
Predicted Protein Size:	65.9 kDa
Gene Name:	insulin like growth factor 2 mRNA binding protein 2
Database Link:	NP_006539 Entrez Gene 303824 Rat Entrez Gene 319765 Mouse Entrez Gene 700598 Monkey Entrez Gene 10644 Human Q9Y6M1
Background:	This gene encodes a member of the IGF-II mRNA-binding protein (IMP) family. The protein encoded by this gene contains several four KH domains and two RRM domains. It functions by binding to the 5' UTR of the insulin-like growth factor 2 (IGF2) mRNA and regulating IGF2 translation. Alternate transcriptional splice variants, encoding different isoforms, have been characterized. [provided by RefSeq]
Synonyms:	IMP-2; IMP2; VICKZ2



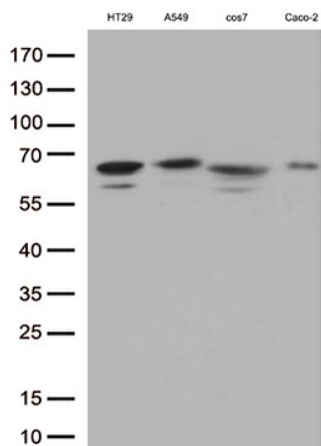
[View online »](#)

Product images:


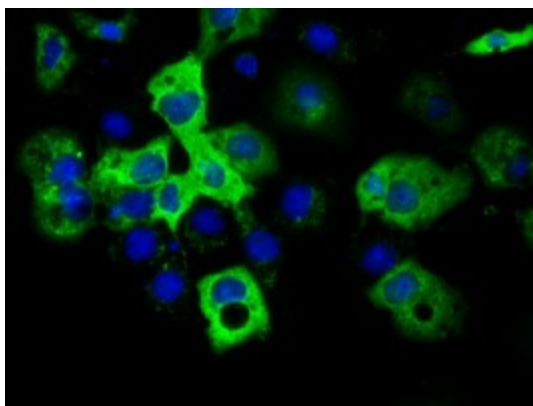
HEK293T cells were transfected with the pCMV6-ENTRY control (Left lane) or pCMV6-ENTRY IGF2BP2 ([RC205673], Right lane) cDNA for 48 hrs and lysed. Equivalent amounts of cell lysates (5 ug per lane) were separated by SDS-PAGE and immunoblotted with anti-IGF2BP2. Positive lysates [LY401961] (100ug) and [LC401961] (20ug) can be purchased separately from OriGene.



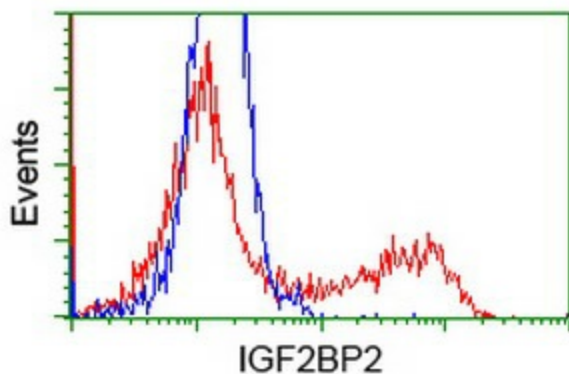
Western blot analysis of extracts (35ug) from 9 different cell lines by using anti-IGF2BP2 monoclonal antibody.



Western blot analysis of extracts (35ug) from 4 cell line lysates by using anti-IGF2BP2 monoclonal antibody (1:500).



Anti-IGF2BP2 mouse monoclonal antibody ([TA501275]) immunofluorescent staining of COS7 cells transiently transfected by pCMV6-ENTRY IGF2BP2 ([RC205673]).



HEK293T cells transfected with either [RC205673] overexpress plasmid (Red) or empty vector control plasmid (Blue) were immunostained by anti-IGF2BP2 antibody ([TA501275]), and then analyzed by flow cytometry.