

Product datasheet for **TA501271**

IGF2BP2 Mouse Monoclonal Antibody [Clone ID: OTI2H7]

Product data:

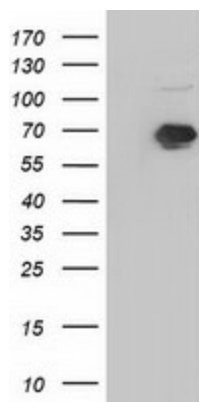
| | |
|-------------------------|-----------------------------------------------------------------------------------------------------------------------------------------------------------------------------------------------------------------------------------------------------------------------------------------------------------------------------------------------------------------------------------------------------------------|
| Product Type: | Primary Antibodies |
| Clone Name: | OTI2H7 |
| Applications: | FC, IF, WB |
| Recommended Dilution: | WB 1:500~2000, IF 1:100, FLOW 1:100 |
| Reactivity: | Human, Monkey, Mouse, Rat |
| Host: | Mouse |
| Isotype: | IgG2b |
| Clonality: | Monoclonal |
| Immunogen: | Full length human recombinant protein of human IGF2BP2 (NP_006333) produced in HEK293T cell. |
| Formulation: | PBS (pH 7.3) containing 1% BSA, 50% glycerol and 0.02% sodium azide. |
| Concentration: | 0.7 mg/ml |
| Purification: | Purified from mouse ascites fluids or tissue culture supernatant by affinity chromatography (protein A/G) |
| Conjugation: | Unconjugated |
| Storage: | Store at -20°C as received. |
| Stability: | Stable for 12 months from date of receipt. |
| Predicted Protein Size: | 65.9 kDa |
| Gene Name: | insulin like growth factor 2 mRNA binding protein 2 |
| Database Link: | NP_006539 Entrez Gene 303824 Rat Entrez Gene 319765 Mouse Entrez Gene 700598 Monkey Entrez Gene 10644 Human Q9Y6M1 |
| Background: | This gene encodes a member of the IGF-II mRNA-binding protein (IMP) family. The protein encoded by this gene contains several four KH domains and two RRM domains. It functions by binding to the 5' UTR of the insulin-like growth factor 2 (IGF2) mRNA and regulating IGF2 translation. Alternate transcriptional splice variants, encoding different isoforms, have been characterized. [provided by RefSeq] |



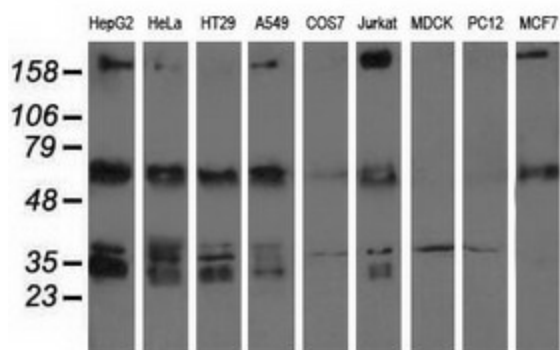
[View online »](#)

Synonyms: IMP-2; IMP2; VICKZ2

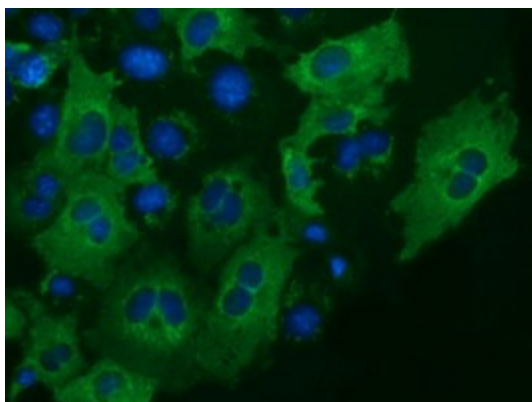
Product images:



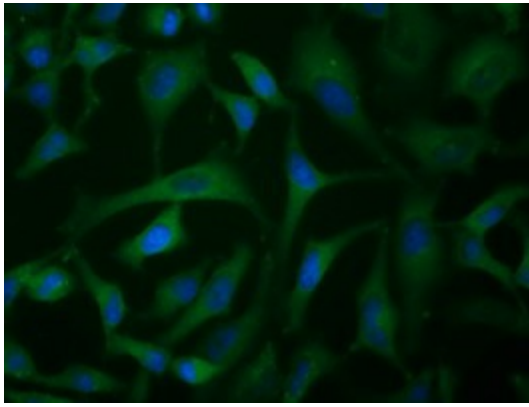
HEK293T cells were transfected with the pCMV6-ENTRY control (Left lane) or pCMV6-ENTRY IGF2BP2 ([RC205673], Right lane) cDNA for 48 hrs and lysed. Equivalent amounts of cell lysates (5 ug per lane) were separated by SDS-PAGE and immunoblotted with anti-IGF2BP2. Positive lysates [LY401961] (100ug) and [LC401961] (20ug) can be purchased separately from OriGene.



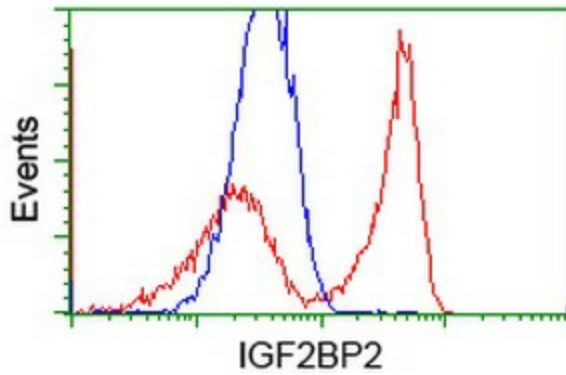
Western blot analysis of extracts (35ug) from 9 different cell lines by using anti-IGF2BP2 monoclonal antibody.



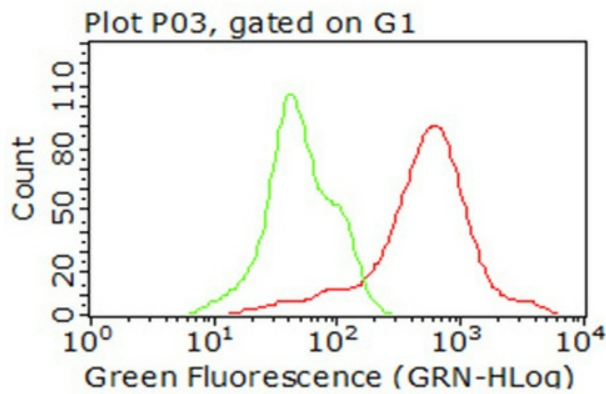
Anti-IGF2BP2 mouse monoclonal antibody (TA501271) immunofluorescent staining of COS7 cells transiently transfected by pCMV6-ENTRY IGF2BP2 ([RC205673]).



Immunofluorescent staining of HeLa cells using anti-IGF2BP2 mouse monoclonal antibody (TA501271).



HEK293T cells transfected with either [RC205673] overexpress plasmid (Red) or empty vector control plasmid (Blue) were immunostained by anti-IGF2BP2 antibody (TA501271), and then analyzed by flow cytometry.



Flow cytometric analysis of living HeLa cells, using anti-IGF2BP2 antibody (TA501271, Red), compared to an isotype control (green), and a PBS control (blue) (1:100).