

Product datasheet for **TA501269AM**

IGF2BP2 Mouse Monoclonal Antibody (Biotin conjugated) [Clone ID: OTI3F9]

Product data:

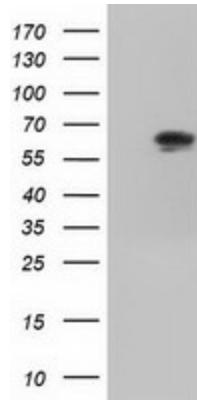
Product Type:	Primary Antibodies
Clone Name:	OTI3F9
Applications:	FC, IF, IHC, WB
Recommended Dilution:	WB 1:1000~2000, IHC 1:50, IF 1:100, FLOW 1:100
Reactivity:	Human, Dog, Monkey, Mouse, Rat
Host:	Mouse
Isotype:	IgG1
Clonality:	Monoclonal
Immunogen:	Full length human recombinant protein of human IGF2BP2 (NP_006333) produced in HEK293T cell.
Formulation:	PBS (pH 7.3) containing 1% BSA, 50% glycerol and 0.02% sodium azide.
Concentration:	0.5 mg/ml
Purification:	Purified from mouse ascites fluids or tissue culture supernatant by affinity chromatography (protein A/G)
Conjugation:	Biotin
Storage:	Store at -20°C as received.
Stability:	Stable for 12 months from date of receipt.
Predicted Protein Size:	65.9 kDa
Gene Name:	insulin like growth factor 2 mRNA binding protein 2
Database Link:	NP_006539 Entrez Gene 303824 Rat Entrez Gene 319765 Mouse Entrez Gene 478662 Dog Entrez Gene 700598 Monkey Entrez Gene 10644 Human Q9Y6M1
Background:	This gene encodes a member of the IGF-II mRNA-binding protein (IMP) family. The protein encoded by this gene contains several four KH domains and two RRM domains. It functions by binding to the 5' UTR of the insulin-like growth factor 2 (IGF2) mRNA and regulating IGF2 translation. Alternate transcriptional splice variants, encoding different isoforms, have been characterized. [provided by RefSeq]



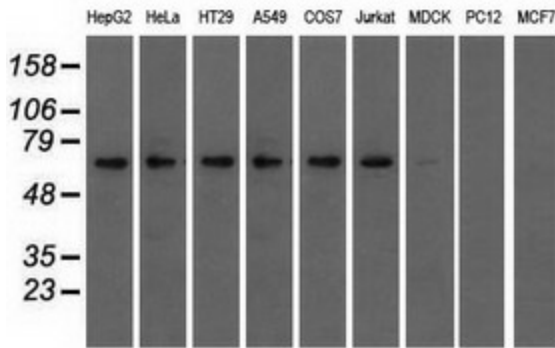
[View online »](#)

Synonyms: IMP-2; IMP2; VICKZ2

Product images:



HEK293T cells were transfected with the pCMV6-ENTRY control (Cat# [PS100001], Left lane) or pCMV6-ENTRY IGF2BP2 (Cat# [RC205673], Right lane) cDNA for 48 hrs and lysed. Equivalent amounts of cell lysates (5 ug per lane) were separated by SDS-PAGE and immunoblotted with anti-IGF2BP2(Cat# [TA501269]). Positive lysates [LY401961] (100ug) and [LC401961] (20ug) can be purchased separately from OriGene.



Western blot analysis of extracts (35ug) from 9 different cell lines by using anti-IGF2BP2 monoclonal antibody.

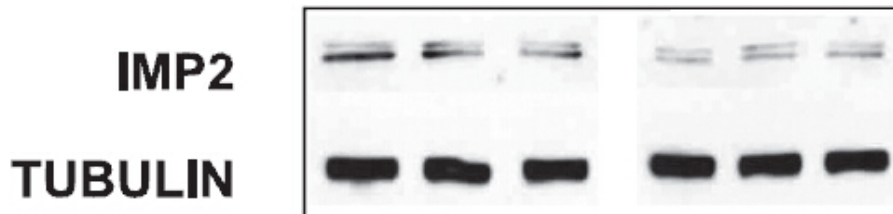
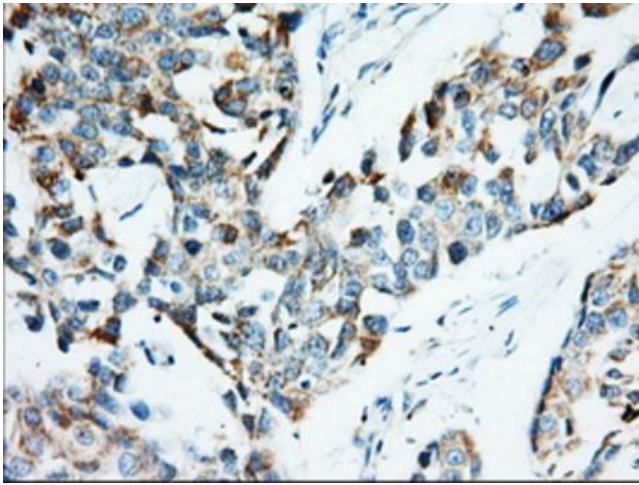
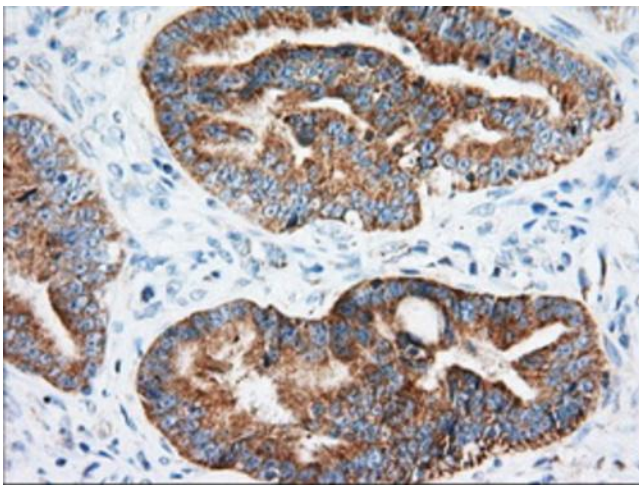


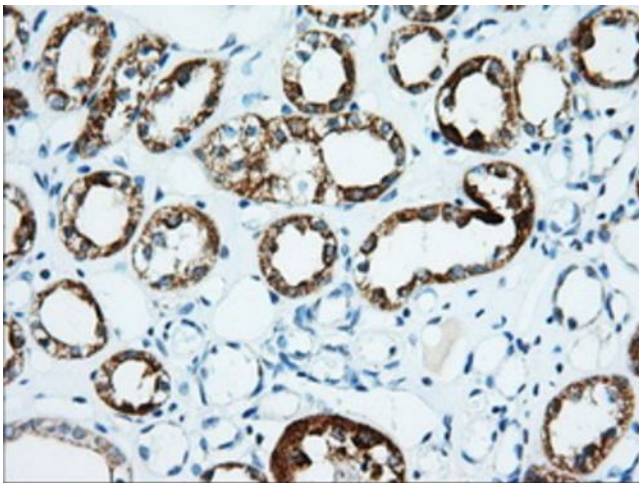
Figure from citation: Western Blot of IGF2BP2 (IMP2) protein level by using anti-IGF2BP2 antibody in rat glomerular MCs. [View Citation](#)



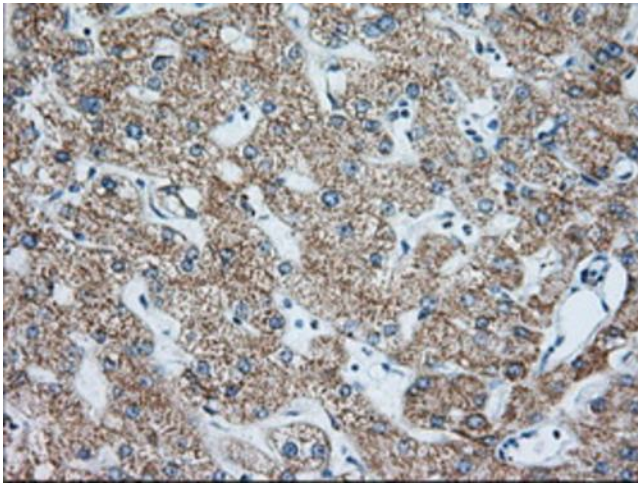
Immunohistochemical staining of paraffin-embedded Adenocarcinoma of Human breast tissue using anti-IGF2BP2 mouse monoclonal antibody. (Heat-induced epitope retrieval by 10mM citric buffer, pH6.0, 100°C for 10min, [TA501269], Dilution 1:50)



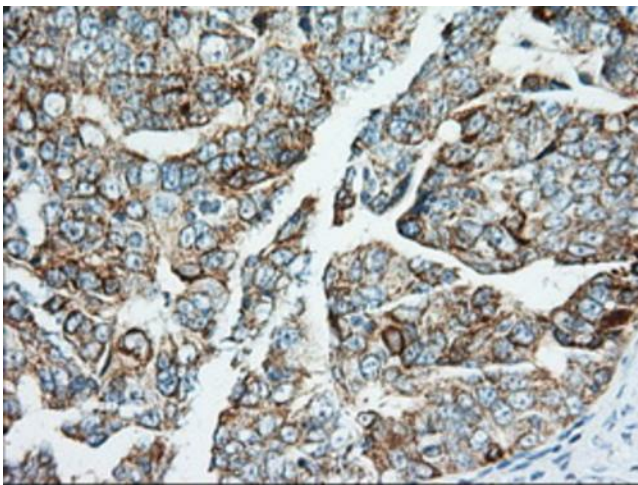
Immunohistochemical staining of paraffin-embedded Adenocarcinoma of Human colon tissue using anti-IGF2BP2 mouse monoclonal antibody. (Heat-induced epitope retrieval by 10mM citric buffer, pH6.0, 100°C for 10min, [TA501269], Dilution 1:50)



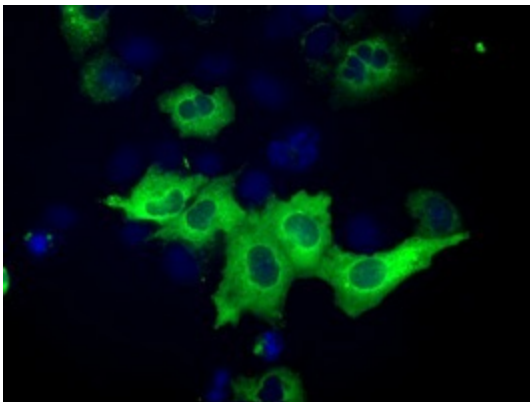
Immunohistochemical staining of paraffin-embedded Human Kidney tissue within the normal limits using anti-IGF2BP2 mouse monoclonal antibody. (Heat-induced epitope retrieval by 10mM citric buffer, pH6.0, 100°C for 10min, [TA501269], Dilution 1:50)



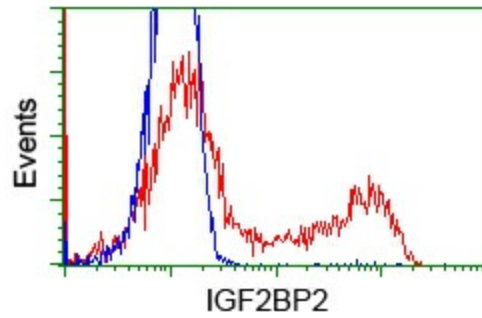
Immunohistochemical staining of paraffin-embedded Human liver tissue within the normal limits using anti-IGF2BP2 mouse monoclonal antibody. (Heat-induced epitope retrieval by 10mM citric buffer, pH6.0, 100°C for 10min, [TA501269], Dilution 1:50)



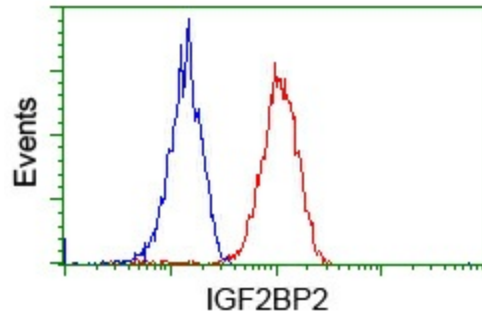
Immunohistochemical staining of paraffin-embedded Adenocarcinoma of Human ovary tissue using anti-IGF2BP2 mouse monoclonal antibody. (Heat-induced epitope retrieval by 10mM citric buffer, pH6.0, 100°C for 10min, [TA501269], Dilution 1:50)



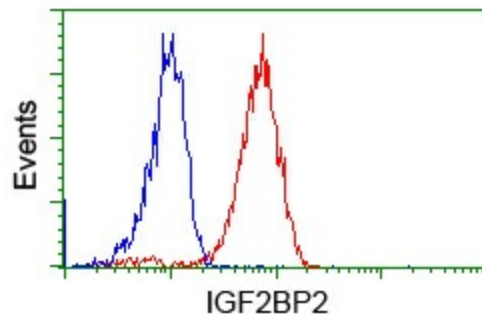
Anti-IGF2BP2 mouse monoclonal antibody ([TA501269]) immunofluorescent staining of COS7 cells transiently transfected by pCMV6-ENTRY IGF2BP2 ([RC205673]).



HEK293T cells transfected with either [RC205673] overexpress plasmid (Red) or empty vector control plasmid (Blue) were immunostained by anti-IGF2BP2 antibody ([TA501269]), and then analyzed by flow cytometry.



Flow cytometric Analysis of HeLa cells, using anti-IGF2BP2 antibody ([TA501269]), (Red), compared to a nonspecific negative control antibody (TA50011), (Blue).



Flow cytometric Analysis of Jurkat cells, using anti-IGF2BP2 antibody ([TA501269]), (Red), compared to a nonspecific negative control antibody (TA50011), (Blue).