

## Product datasheet for **TA501265AM**

### **RANGAP1 Mouse Monoclonal Antibody (Biotin conjugated) [Clone ID: OTI1B4]**

#### **Product data:**

|                         |   |
|-------------------------|---|
| Product Type:           | Primary Antibodies  |
| Clone Name:             | OTI1B4  |
| Applications:           | FC, IF, IHC, WB   |
| Recommended Dilution:   | WB 1:1000~2000, IHC 1:50, IF 1:100, FLOW 1:100  |
| Reactivity:             | Human, Dog, Rat, Mouse  |
| Host:                   | Mouse   |
| Isotype:                | IgG2a   |
| Clonality:              | Monoclonal  |
| Immunogen:              | Full length human recombinant protein of human RANGAP1 (NP_002874) produced in HEK293T cell.  |
| Formulation:            | PBS (pH 7.3) containing 1% BSA, 50% glycerol and 0.02% sodium azide.  |
| Concentration:          | 0.5 mg/ml   |
| Purification:           | Purified from mouse ascites fluids or tissue culture supernatant by affinity chromatography (protein A/G)   |
| Conjugation:            | Biotin  |
| Storage:                | Store at -20°C as received.   |
| Stability:              | Stable for 12 months from date of receipt.  |
| Predicted Protein Size: | 63.4 kDa  |
| Gene Name:              | Ran GTPase activating protein 1   |
| Database Link:          | <a href="#">NP_002874</a><br><a href="#">Entrez Gene 19387 Mouse</a> <a href="#">Entrez Gene 362965 Rat</a> <a href="#">Entrez Gene 481234 Dog</a> <a href="#">Entrez Gene 5905 Human</a><br><a href="#">P46060</a> |



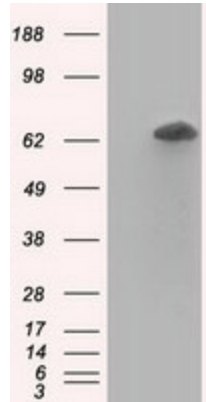
[View online »](#)

**Background:**

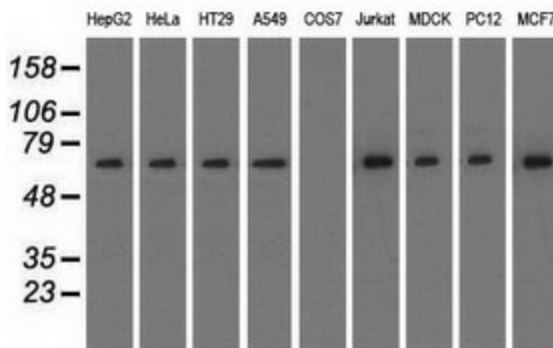
RanGAP1, is a homodimeric 65-kD polypeptide that specifically induces the GTPase activity of RAN, but not of RAS by over 1,000-fold. RanGAP1 is the immediate antagonist of RCC1, a regulator molecule that keeps RAN in the active, GTP-bound state. The RANGAP1 gene encodes a 587-amino acid polypeptide. The sequence is unrelated to that of GTPase activators for other RAS-related proteins, but is 88% identical to Fug1, the murine homolog of yeast Rna1p. RanGAP1 and RCC1 control RAN-dependent transport between the nucleus and cytoplasm. RanGAP1 is a key regulator of the RAN GTP/GDP cycle. [provided by RefSeq]

**Synonyms:**

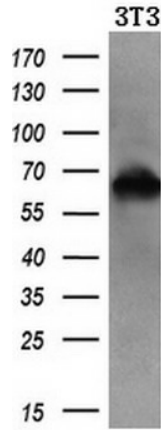
Fug1; RANGAP; SD

**Product images:**


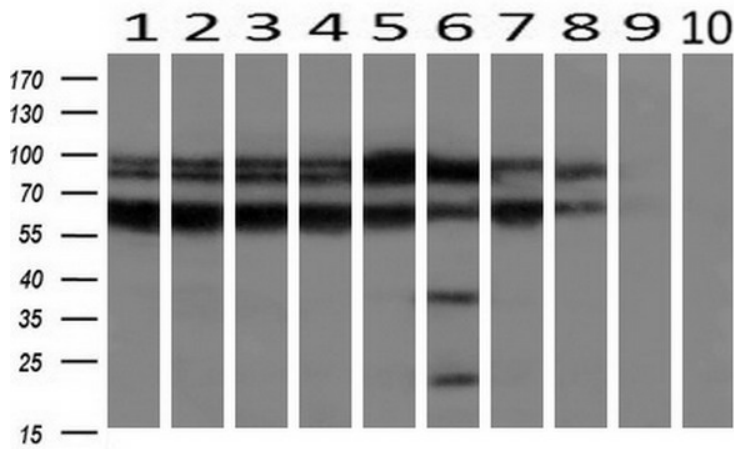
HEK293T cells were transfected with the pCMV6-ENTRY control (Cat# [PS100001], Left lane) or pCMV6-ENTRY RANGAP1 (Cat# [RC204223], Right lane) cDNA for 48 hrs and lysed. Equivalent amounts of cell lysates (5 ug per lane) were separated by SDS-PAGE and immunoblotted with anti-RANGAP1(Cat# [TA501265]). Positive lysates [LY401016] (100ug) and [LC401016] (20ug) can be purchased separately from OriGene.



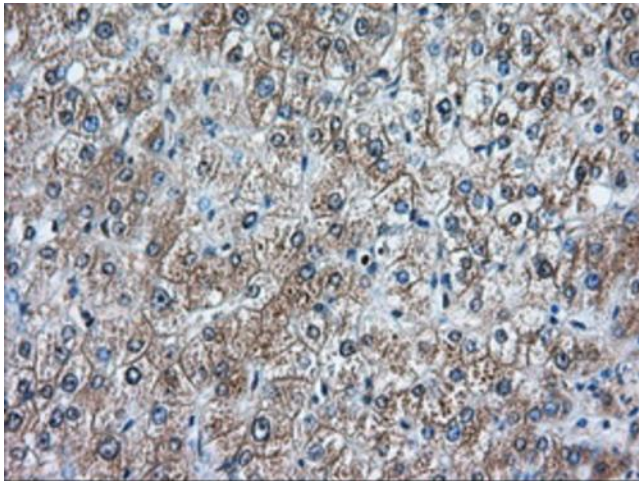
Western blot analysis of extracts (35ug) from 9 different cell lines by using anti-RANGAP1 monoclonal antibody.



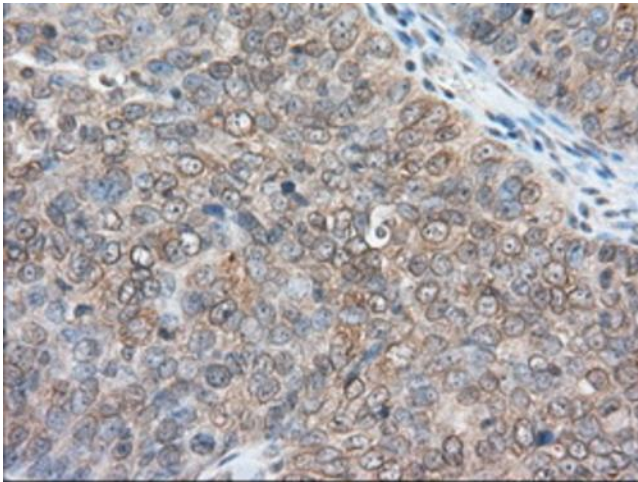
Western blot analysis of extracts (10ug) from a mouse cell line by using anti-RANGAP1 monoclonal antibody (1:200).



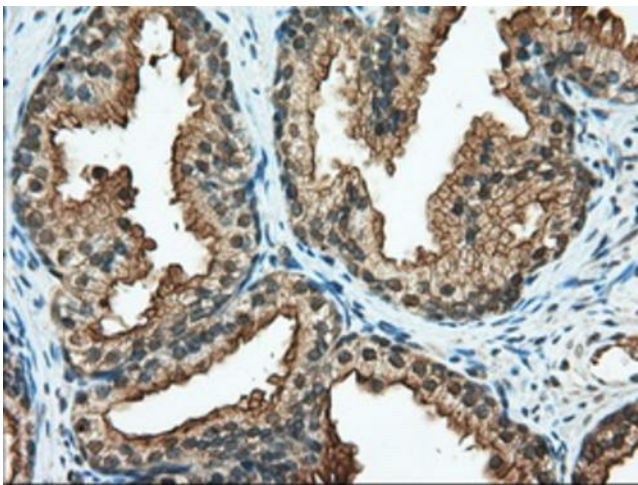
Western blot analysis of extracts (10ug) from 10 Human tissue by using anti-RANGAP1 monoclonal antibody at 1:200 (1: Testis; 2: Omentum; 3: Uterus; 4: Breast; 5: Brain; 6: Liver; 7: Ovary; 8: Thyroid gland; 9: colon;10: spleen).



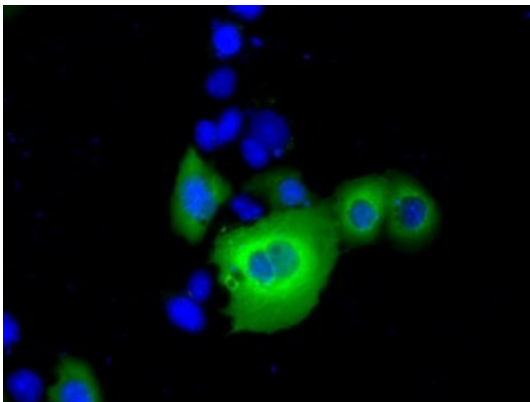
Immunohistochemical staining of paraffin-embedded Human liver tissue within the normal limits using anti-RANGAP1 mouse monoclonal antibody. (Heat-induced epitope retrieval by 10mM citric buffer, pH6.0, 100°C for 10min, [TA501265], Dilution 1:50)



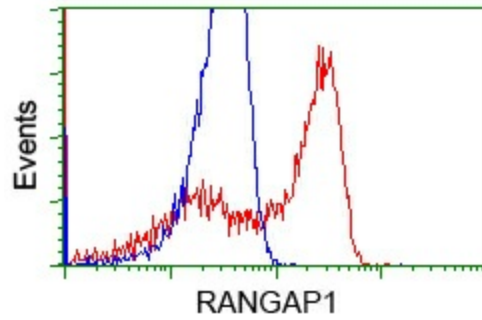
Immunohistochemical staining of paraffin-embedded Adenocarcinoma of Human ovary tissue using anti-RANGAP1 mouse monoclonal antibody. (Heat-induced epitope retrieval by 10mM citric buffer, pH6.0, 100°C for 10min, [TA501265], Dilution 1:50)



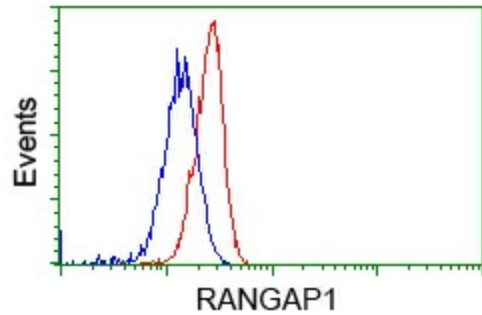
Immunohistochemical staining of paraffin-embedded Human prostate tissue within the normal limits using anti-RANGAP1 mouse monoclonal antibody. (Heat-induced epitope retrieval by 10mM citric buffer, pH6.0, 100°C for 10min, [TA501265], Dilution 1:50)



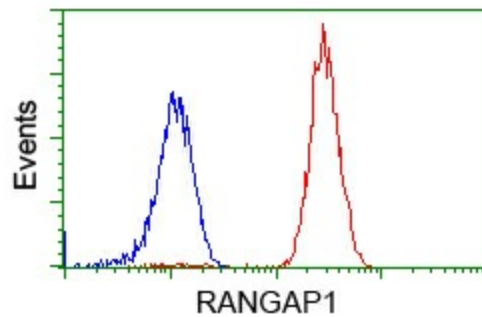
Anti-RANGAP1 mouse monoclonal antibody ([TA501265]) immunofluorescent staining of COS7 cells transiently transfected by pCMV6-ENTRY RANGAP1 ([RC204223]).



HEK293T cells transfected with either [RC204223] overexpress plasmid (Red) or empty vector control plasmid (Blue) were immunostained by anti-RANGAP1 antibody ([TA501265]), and then analyzed by flow cytometry.



Flow cytometric Analysis of HeLa cells, using anti-RANGAP1 antibody ([TA501265]), (Red), compared to a nonspecific negative control antibody (TA50011), (Blue).



Flow cytometric Analysis of Jurkat cells, using anti-RANGAP1 antibody ([TA501265]), (Red), compared to a nonspecific negative control antibody (TA50011), (Blue).