

## Product datasheet for **TA501260S**

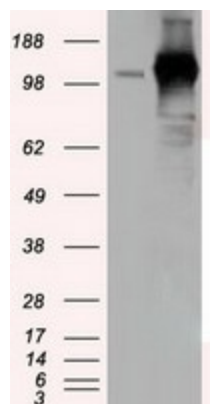
### TACC3 Mouse Monoclonal Antibody [Clone ID: OT11E4]

#### Product data:

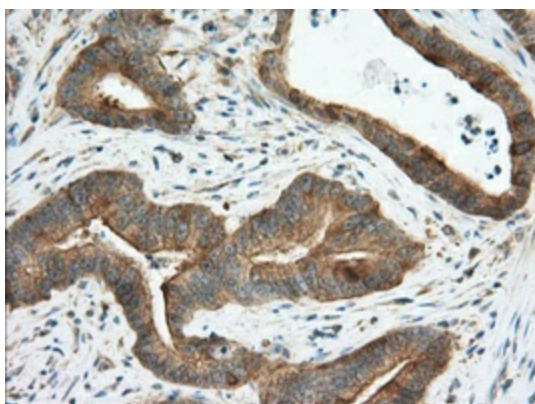
Product Type:	Primary Antibodies
Clone Name:	OT11E4
Applications:	FC, IF, IHC, WB
Recommended Dilution:	WB 1:2000, IHC 1:50, IF 1:100, FLOW 1:100
Reactivity:	Human
Host:	Mouse
Isotype:	IgG1
Clonality:	Monoclonal
Immunogen:	Full length human recombinant protein of human TACC3(NP_006333) produced in HEK293T cell.
Formulation:	PBS (pH 7.3) containing 1% BSA, 50% glycerol and 0.02% sodium azide.
Concentration:	1 mg/ml
Purification:	Purified from mouse ascites fluids or tissue culture supernatant by affinity chromatography (protein A/G)
Conjugation:	Unconjugated
Storage:	Store at -20°C as received.
Stability:	Stable for 12 months from date of receipt.
Predicted Protein Size:	90.2 kDa
Gene Name:	transforming acidic coiled-coil containing protein 3
Database Link:	<a href="#">NP_006333</a> <a href="#">Entrez Gene 10460 Human</a> <a href="#">Q9Y6A5</a>
Background:	The function of this gene has not yet been determined; however, it is speculated that it may be involved in cell growth and differentiation. Expression of this gene is up-regulated in some cancer cell lines, and in embryonic day 15 in mice.
Synonyms:	ERIC-1; ERIC1



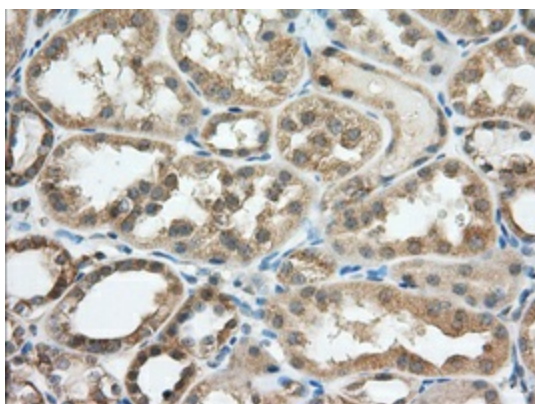
[View online »](#)

**Product images:**

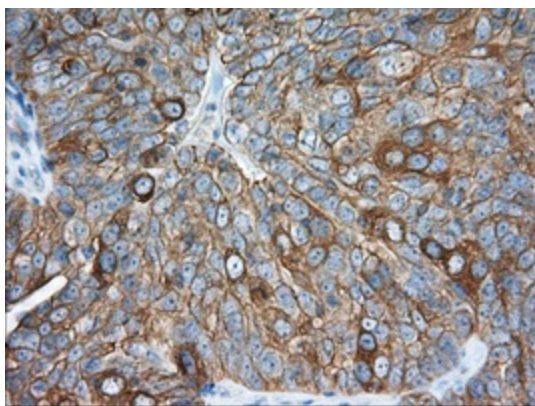
HEK293T cells were transfected with the pCMV6-ENTRY control (Left lane) or pCMV6-ENTRY TACC3 [RC210754], Right lane) cDNA for 48 hrs and lysed. Equivalent amounts of cell lysates (5 ug per lane) were separated by SDS-PAGE and immunoblotted with anti-TACC3. Positive lysates [LY416710] (100ug) and [LC416710] (20ug) can be purchased separately from OriGene.



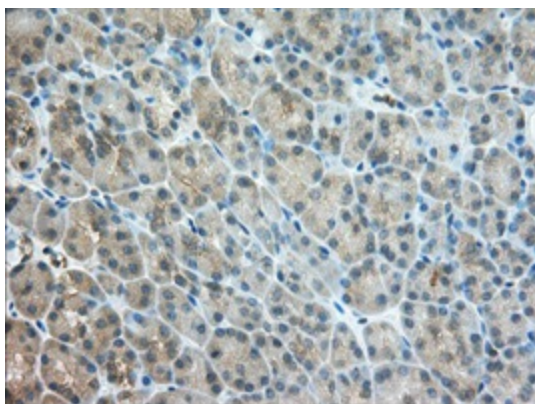
Immunohistochemical staining of paraffin-embedded Adenocarcinoma of Human colon tissue using anti-TACC3 mouse monoclonal antibody. (Heat-induced epitope retrieval by 10mM citric buffer, pH6.0, 100°C for 10min, [TA501260], Dilution 1:50)



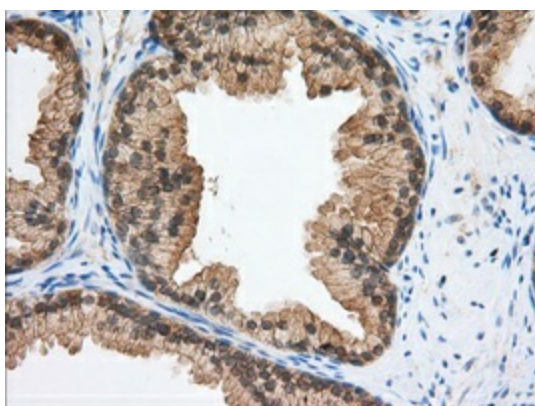
Immunohistochemical staining of paraffin-embedded Human Kidney tissue within the normal limits using anti-TACC3 mouse monoclonal antibody. (Heat-induced epitope retrieval by 10mM citric buffer, pH6.0, 100°C for 10min, [TA501260], Dilution 1:50)



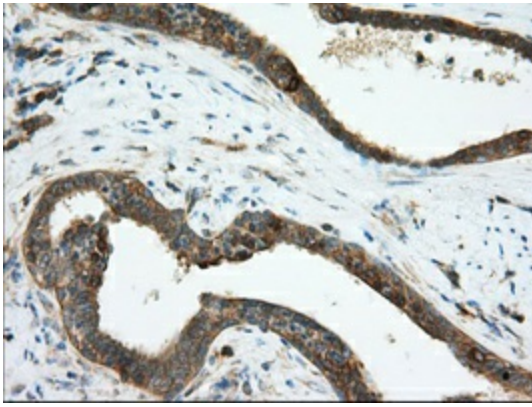
Immunohistochemical staining of paraffin-embedded Adenocarcinoma of Human ovary tissue using anti-TACC3 mouse monoclonal antibody. (Heat-induced epitope retrieval by 10mM citric buffer, pH6.0, 100°C for 10min, [TA501260], Dilution 1:50)



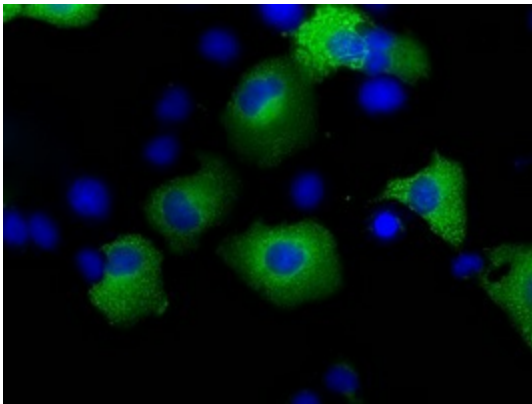
Immunohistochemical staining of paraffin-embedded Human pancreas tissue within the normal limits using anti-TACC3 mouse monoclonal antibody. (Heat-induced epitope retrieval by 10mM citric buffer, pH6.0, 100°C for 10min, [TA501260], Dilution 1:50)



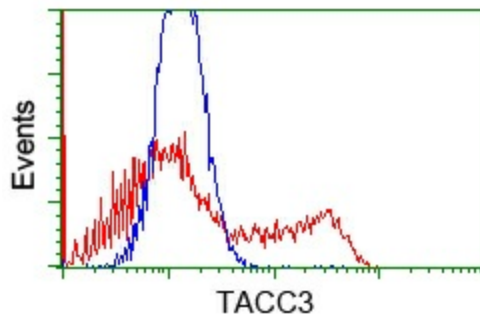
Immunohistochemical staining of paraffin-embedded Human prostate tissue within the normal limits using anti-TACC3 mouse monoclonal antibody. (Heat-induced epitope retrieval by 10mM citric buffer, pH6.0, 100°C for 10min, [TA501260], Dilution 1:50)



Immunohistochemical staining of paraffin-embedded Carcinoma of Human prostate tissue using anti-TACC3 mouse monoclonal antibody. (Heat-induced epitope retrieval by 10mM citric buffer, pH6.0, 100°C for 10min, [TA501260], Dilution 1:50)



Anti-TACC3 mouse monoclonal antibody ([TA501260]) immunofluorescent staining of COS7 cells transiently transfected by pCMV6-ENTRY TACC3 ([RC210754]).



HEK293T cells transfected with either [RC210754] overexpress plasmid (Red) or empty vector control plasmid (Blue) were immunostained by anti-TACC3 antibody ([TA501260]), and then analyzed by flow cytometry.