

## Product datasheet for **TA501258BM**

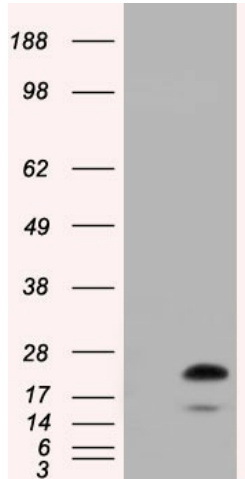
### **RAB17 Mouse Monoclonal Antibody (HRP conjugated) [Clone ID: OTI4E7]**

#### **Product data:**

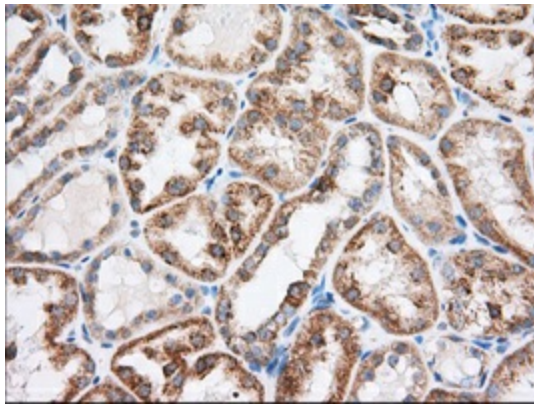
<b>Product Type:</b>	Primary Antibodies
<b>Clone Name:</b>	OTI4E7
<b>Applications:</b>	IF, IHC, WB
<b>Recommended Dilution:</b>	WB 1:2000, IHC 1:50, IF 1:100
<b>Reactivity:</b>	Human
<b>Host:</b>	Mouse
<b>Isotype:</b>	IgG1
<b>Clonality:</b>	Monoclonal
<b>Immunogen:</b>	Full length human recombinant protein of human RAB17 (NP_071894) produced in HEK293T cell.
<b>Formulation:</b>	PBS (pH 7.3) containing 1% BSA, 50% glycerol.
<b>Concentration:</b>	0.5 mg/ml
<b>Purification:</b>	Purified from mouse ascites fluids or tissue culture supernatant by affinity chromatography (protein A/G)
<b>Conjugation:</b>	HRP
<b>Storage:</b>	Store at -20°C as received.
<b>Stability:</b>	Stable for 12 months from date of receipt.
<b>Predicted Protein Size:</b>	23.5 kDa
<b>Gene Name:</b>	RAB17, member RAS oncogene family
<b>Database Link:</b>	<a href="#">NP_071894</a> <a href="#">Entrez Gene 64284 Human</a> <a href="#">Q9H0T7</a>
<b>Background:</b>	The Rab subfamily of small GTPases plays an important role in the regulation of membrane trafficking. RAB17 is an epithelial cell-specific GTPase
<b>Synonyms:</b>	FLJ12538
<b>Protein Families:</b>	Druggable Genome



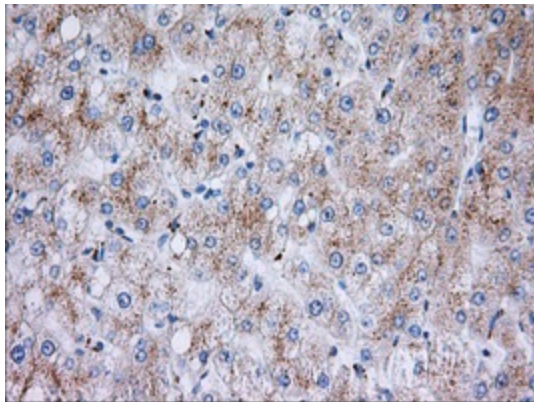
[View online »](#)

**Product images:**


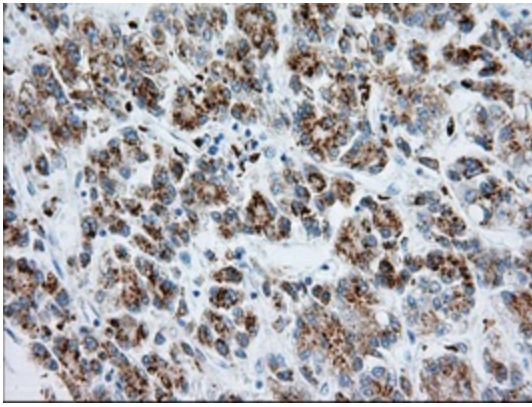
HEK293T cells were transfected with the pCMV6-ENTRY control (Left lane) or pCMV6-ENTRY RAB17 ([RC208378], Right lane) cDNA for 48 hrs and lysed. Equivalent amounts of cell lysates (5 ug per lane) were separated by SDS-PAGE and immunoblotted with anti-RAB17. Positive lysates [LY402920] (100ug) and [LC402920] (20ug) can be purchased separately from OriGene.



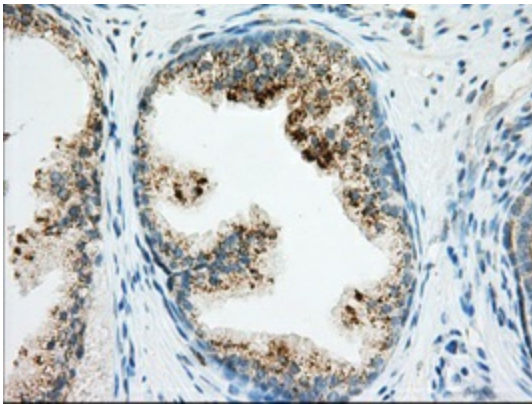
Immunohistochemical staining of paraffin-embedded Human Kidney tissue within the normal limits using anti-RAB17 mouse monoclonal antibody. (Heat-induced epitope retrieval by 10mM citric buffer, pH6.0, 100°C for 10min, [TA501258], Dilution 1:50)



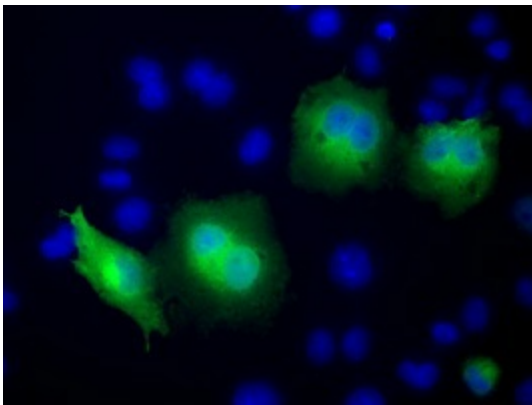
Immunohistochemical staining of paraffin-embedded Human liver tissue within the normal limits using anti-RAB17 mouse monoclonal antibody. (Heat-induced epitope retrieval by 10mM citric buffer, pH6.0, 100°C for 10min, [TA501258], Dilution 1:50)



Immunohistochemical staining of paraffin-embedded Carcinoma of Human liver tissue using anti-RAB17 mouse monoclonal antibody. (Heat-induced epitope retrieval by 10mM citric buffer, pH6.0, 100°C for 10min, [TA501258], Dilution 1:50)



Immunohistochemical staining of paraffin-embedded Human prostate tissue within the normal limits using anti-RAB17 mouse monoclonal antibody. (Heat-induced epitope retrieval by 10mM citric buffer, pH6.0, 100°C for 10min, [TA501258], Dilution 1:50)



Anti-RAB17 mouse monoclonal antibody ([TA501258]) immunofluorescent staining of COS7 cells transiently transfected by pCMV6-ENTRY RAB17 ([RC208378]).