

Product datasheet for **TA501247BM**

ketohexokinase (KHK) Mouse Monoclonal Antibody (HRP conjugated) [Clone ID: OTI3C4]

Product data:

Product Type:	Primary Antibodies
Clone Name:	OTI3C4
Applications:	FC, IHC, WB
Recommended Dilution:	WB 1:2000, IHC 1:50, FLOW 1:100
Reactivity:	Human
Host:	Mouse
Isotype:	IgG1
Clonality:	Monoclonal
Immunogen:	Full length human recombinant protein of human KHK(NP_000212) produced in HEK293T cell.
Formulation:	PBS (pH 7.3) containing 1% BSA, 50% glycerol.
Concentration:	0.5 mg/ml
Purification:	Purified from mouse ascites fluids or tissue culture supernatant by affinity chromatography (protein A/G)
Conjugation:	HRP
Storage:	Store at -20°C as received.
Stability:	Stable for 12 months from date of receipt.
Predicted Protein Size:	32.5 kDa
Gene Name:	ketohexokinase
Database Link:	NP_000212 Entrez Gene 3795 Human P50053
Background:	This gene encodes ketohexokinase that catalyzes conversion of fructose to fructose-1-phosphate. The product of this gene is the first enzyme with a specialized pathway that catabolizes dietary fructose. Alternatively spliced transcript variants encoding different isoforms have been identified. [provided by RefSeq]
Synonyms:	ketohexokinase; ketohexokinase (fructokinase)

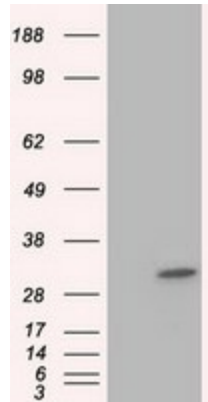


[View online »](#)

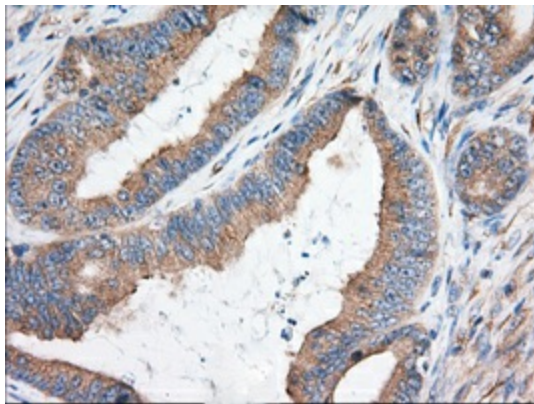
Protein Families: Druggable Genome

Protein Pathways: Fructose and mannose metabolism, Metabolic pathways

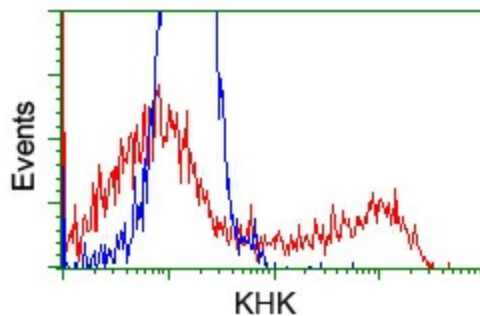
Product images:



HEK293T cells were transfected with the pCMV6-ENTRY control (Left lane) or pCMV6-ENTRY KHK ([RC202424], Right lane) cDNA for 48 hrs and lysed. Equivalent amounts of cell lysates (5 ug per lane) were separated by SDS-PAGE and immunoblotted with anti-KHK. Positive lysates [LY400082] (100ug) and [LC400082] (20ug) can be purchased separately from OriGene.



Immunohistochemical staining of paraffin-embedded Adenocarcinoma of Human colon tissue using anti-KHK mouse monoclonal antibody. (Heat-induced epitope retrieval by 10mM citric buffer, pH6.0, 100°C for 10min, [TA501247], Dilution 1:50)



HEK293T cells transfected with either [RC202424] overexpress plasmid (Red) or empty vector control plasmid (Blue) were immunostained by anti-KHK antibody ([TA501247]), and then analyzed by flow cytometry.