

## Product datasheet for **TA501245M**

### **BIRC5 Mouse Monoclonal Antibody [Clone ID: OTI2D9]**

#### **Product data:**

Product Type:	Primary Antibodies
Clone Name:	OTI2D9
Applications:	FC, IF, IHC, WB
Recommended Dilution:	WB 1:2000, IF 1:100, FLOW 1:100
Reactivity:	Human
Host:	Mouse
Isotype:	IgG1
Clonality:	Monoclonal
Immunogen:	Full length human recombinant protein of human BIRC5 (NP_001159) produced in HEK293T cell.
Formulation:	PBS (pH 7.3) containing 1% BSA, 50% glycerol and 0.02% sodium azide.
Concentration:	1 mg/ml
Purification:	Purified from mouse ascites fluids or tissue culture supernatant by affinity chromatography (protein A/G)
Conjugation:	Unconjugated
Storage:	Store at -20°C as received.
Stability:	Stable for 12 months from date of receipt.
Predicted Protein Size:	16.2 kDa
Gene Name:	baculoviral IAP repeat containing 5
Database Link:	<a href="#">NP_001159</a> <a href="#">Entrez Gene 332 Human</a> <a href="#">O15392</a>

[View online »](#)

**Background:**

This gene is a member of the inhibitor of apoptosis (IAP) gene family, which encode negative regulatory proteins that prevent apoptotic cell death. IAP family members usually contain multiple baculovirus IAP repeat (BIR) domains, but this gene encodes proteins with only a single BIR domain. The encoded proteins also lack a C-terminus RING finger domain. Gene expression is high during fetal development and in most tumors yet low in adult tissues. Antisense transcripts are involved in the regulation of this gene's expression. At least four transcript variants encoding distinct isoforms have been found for this gene, but the full-length natures of only three of them have been determined.

**Synonyms:**

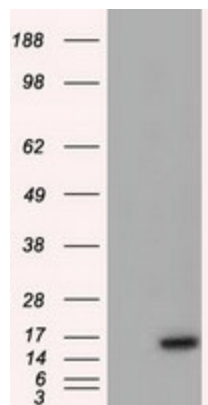
API4; EPR-1

**Protein Families:**

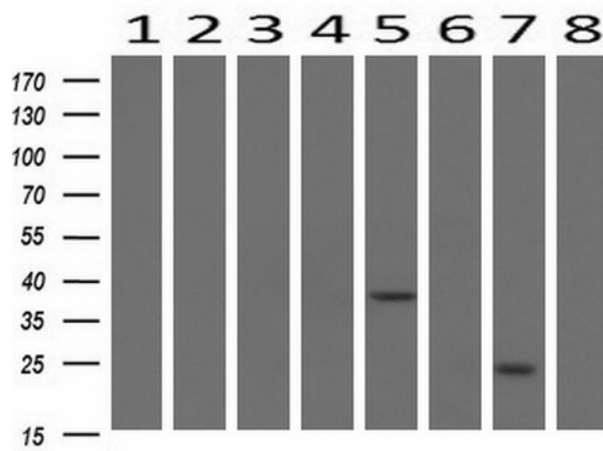
Druggable Genome, Stem cell - Pluripotency

**Protein Pathways:**

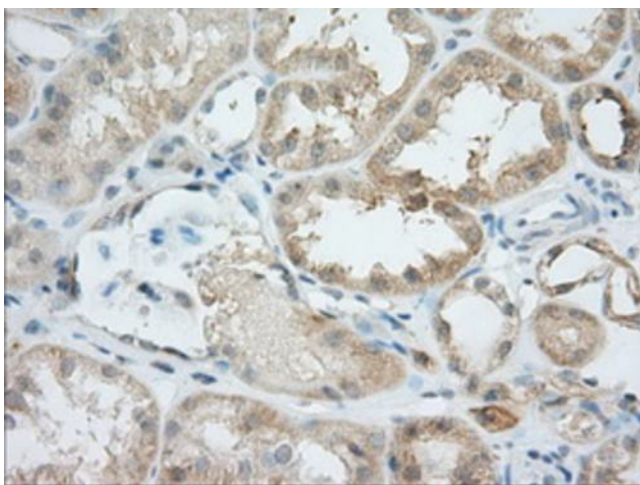
Colorectal cancer, Pathways in cancer

**Product images:**


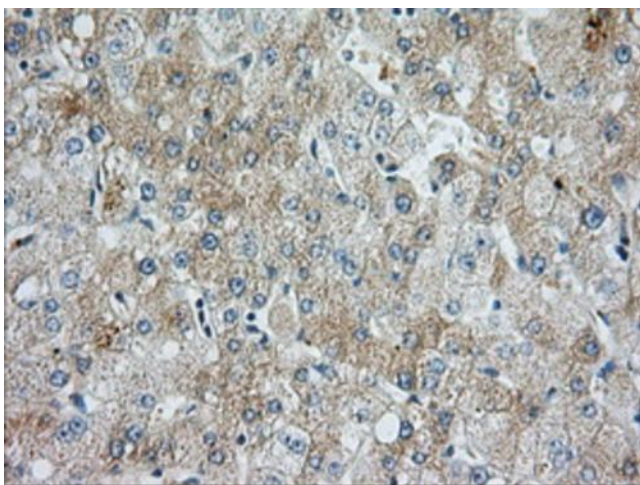
HEK293T cells were transfected with the pCMV6-ENTRY control (Cat# [PS100001], Left lane) or pCMV6-ENTRY BIRC5 (Cat# [RC205935], Right lane) cDNA for 48 hrs and lysed. Equivalent amounts of cell lysates (5 ug per lane) were separated by SDS-PAGE and immunoblotted with anti-BIRC5 (Cat# [TA501245]). Positive lysates [LY400469] (100ug) and [LC400469] (20ug) can be purchased separately from OriGene.



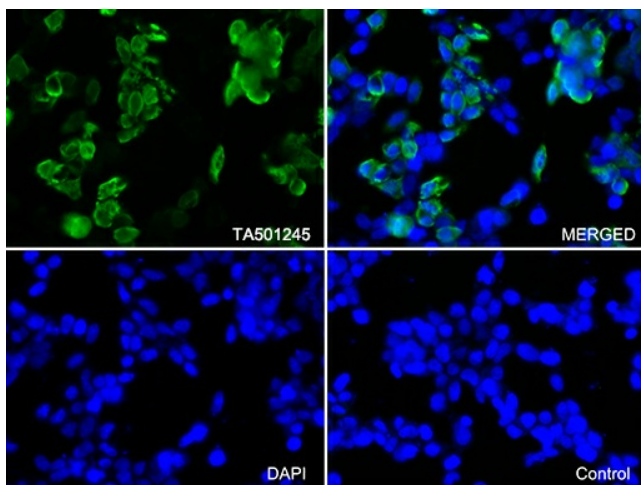
Western blot analysis of extracts (10ug) from 8 Human tissue by using anti-BIRC5 monoclonal antibody at 1:200 (1: Testis; 2: Uterus; 3: Breast; 4: Brain; 5: Liver; 6: Ovary; 7: Thyroid gland; 8: Colon).



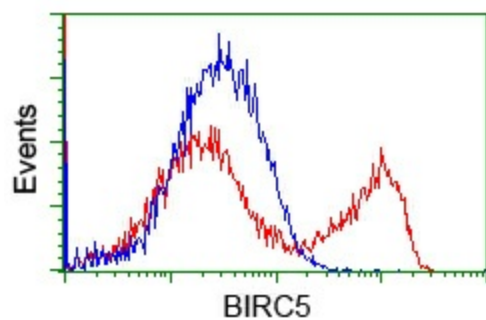
Immunohistochemical staining of paraffin-embedded Human Kidney tissue within the normal limits using anti-BIRC5 mouse monoclonal antibody. Heat-induced epitope retrieval by EDTA solution buffer pH 8.0 at 120°C for 3 min.



Immunohistochemical staining of paraffin-embedded Human liver tissue within the normal limits using anti-BIRC5 mouse monoclonal antibody. Heat-induced epitope retrieval by EDTA solution buffer pH 8.0 at 120°C for 3 min.



Immunofluorescent staining of 293T cells transfected by pCMV6-ENTRY BIRC5 ([RC205935]) using anti-BIRC5 antibody ([TA501245])/green, upper left; DAPI/blue, lower left; MERGED, upper right). 293T cells transfected with empty vector served as a negative control (MERGED, lower right) (1:100).



HEK293T cells transfected with either [RC205935] overexpress plasmid (Red) or empty vector control plasmid (Blue) were immunostained by anti-BIRC5 antibody ([TA501245]), and then analyzed by flow cytometry.