

## Product datasheet for **TA501241BM**

### H6PD Mouse Monoclonal Antibody (HRP conjugated) [Clone ID: OTI1H6]

#### Product data:

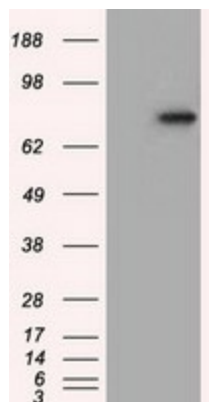
Product Type:	Primary Antibodies
Clone Name:	OTI1H6
Applications:	FC, IF, IHC, WB
Recommended Dilution:	WB 1:1000, IHC 1:50, IF 1:100, FLOW 1:100
Reactivity:	Human
Host:	Mouse
Isotype:	IgG1
Clonality:	Monoclonal
Immunogen:	Full length human recombinant protein of human H6PD (NP_004276) produced in HEK293T cell.
Formulation:	PBS (pH 7.3) containing 1% BSA, 50% glycerol.
Concentration:	0.5 mg/ml
Purification:	Purified from mouse ascites fluids or tissue culture supernatant by affinity chromatography (protein A/G)
Conjugation:	HRP
Storage:	Store at -20°C as received.
Stability:	Stable for 12 months from date of receipt.
Predicted Protein Size:	88.7 kDa
Gene Name:	hexose-6-phosphate dehydrogenase/glucose 1-dehydrogenase
Database Link:	<a href="#">NP_004276</a> <a href="#">Entrez Gene 9563 Human</a> <a href="#">O95479</a>
Background:	There are 2 forms of glucose-6-phosphate dehydrogenase. G form is X-linked and H form, encoded by this gene, is autosomally linked. This H form shows activity with other hexose-6-phosphates, especially galactose-6-phosphate, whereas the G form is specific for glucose-6-phosphate. Both forms are present in most tissues, but H form is not found in red cells.
Synonyms:	CORTRD1; G6PDH; GDH



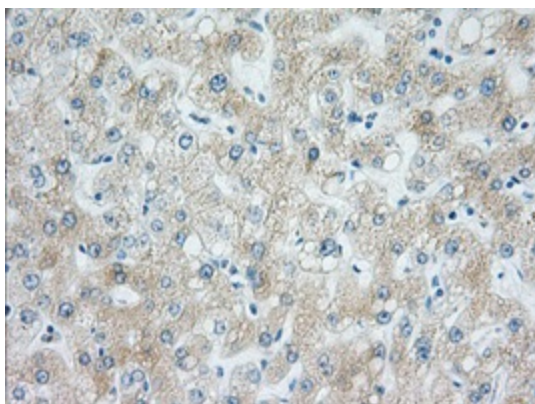
[View online »](#)

Protein Pathways: Metabolic pathways, Pentose phosphate pathway

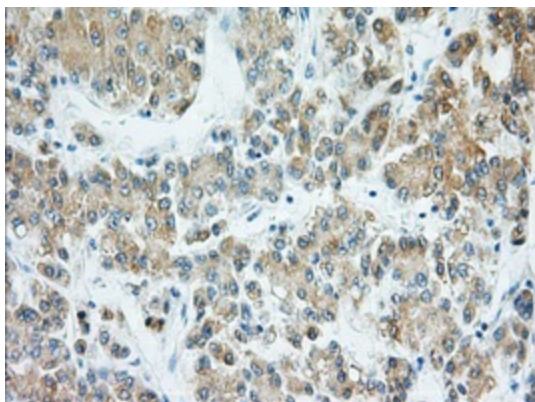
### Product images:



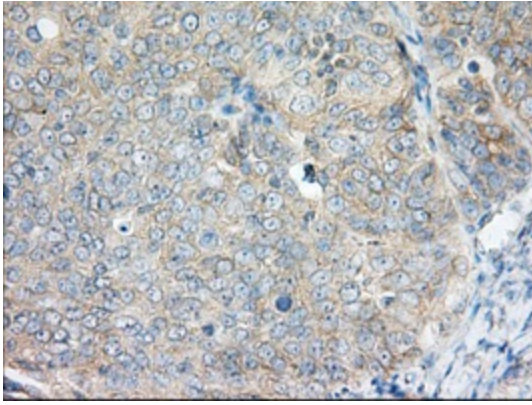
HEK293T cells were transfected with the pCMV6-ENTRY control (Left lane) or pCMV6-ENTRY H6PD ([RC209890], Right lane) cDNA for 48 hrs and lysed. Equivalent amounts of cell lysates (5 ug per lane) were separated by SDS-PAGE and immunoblotted with anti-H6PD. Positive lysates [LY401369] (100ug) and [LC401369] (20ug) can be purchased separately from OriGene.



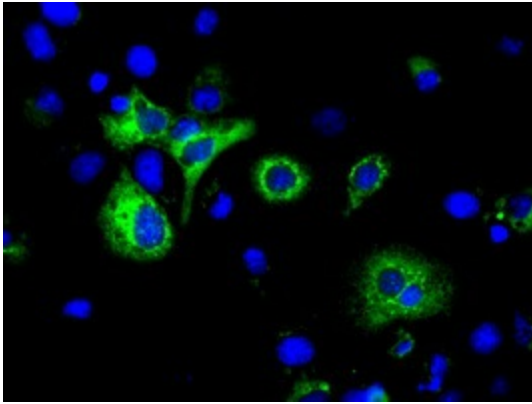
Immunohistochemical staining of paraffin-embedded Human liver tissue within the normal limits using anti-H6PD mouse monoclonal antibody. (Heat-induced epitope retrieval by 10mM citric buffer, pH6.0, 100°C for 10min, [TA501241], Dilution 1:50)



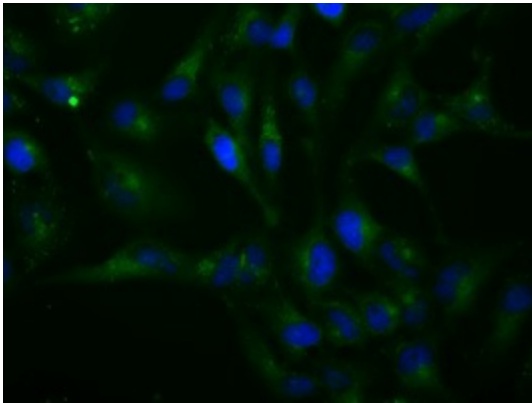
Immunohistochemical staining of paraffin-embedded Carcinoma of Human liver tissue using anti-H6PD mouse monoclonal antibody. (Heat-induced epitope retrieval by 10mM citric buffer, pH6.0, 100°C for 10min, [TA501241], Dilution 1:50)



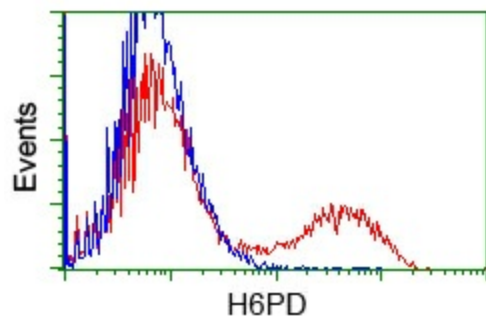
Immunohistochemical staining of paraffin-embedded Adenocarcinoma of Human ovary tissue using anti-H6PD mouse monoclonal antibody. (Heat-induced epitope retrieval by 10mM citric buffer, pH6.0, 100°C for 10min, [TA501241], Dilution 1:50)



Anti-H6PD mouse monoclonal antibody ([TA501241]) immunofluorescent staining of COS7 cells transiently transfected by pCMV6-ENTRY H6PD ([RC209890]).



Immunofluorescent staining of HeLa cells using anti-H6PD mouse monoclonal antibody ([TA501241]).



HEK293T cells transfected with either [RC209890] overexpress plasmid (Red) or empty vector control plasmid (Blue) were immunostained by anti-H6PD antibody ([TA501241]), and then analyzed by flow cytometry.