

## Product datasheet for **TA501237BM**

### **BCL10 Mouse Monoclonal Antibody (HRP conjugated) [Clone ID: OTI4A8]**

#### **Product data:**

|                         |   |
|-------------------------|---|
| Product Type:           | Primary Antibodies  |
| Clone Name:             | OTI4A8  |
| Applications:           | FC, IF, IHC, WB   |
| Recommended Dilution:   | WB 1:2000, IHC 1:50, IF 1:100, FLOW 1:100   |
| Reactivity:             | Human, Mouse, Rat   |
| Host:                   | Mouse   |
| Isotype:                | IgG1  |
| Clonality:              | Monoclonal  |
| Immunogen:              | Full length human recombinant protein of human BCL10 (NP_003912) produced in HEK293T cell.  |
| Formulation:            | PBS (pH 7.3) containing 1% BSA, 50% glycerol.   |
| Concentration:          | 0.5 mg/ml   |
| Purification:           | Purified from mouse ascites fluids or tissue culture supernatant by affinity chromatography (protein A/G)   |
| Conjugation:            | HRP   |
| Storage:                | Store at -20°C as received.   |
| Stability:              | Stable for 12 months from date of receipt.  |
| Predicted Protein Size: | 26.1 kDa  |
| Gene Name:              | BCL10 immune signaling adaptor  |
| Database Link:          | <a href="#">NP_003912</a><br><a href="#">Entrez Gene 12042 Mouse</a> <a href="#">Entrez Gene 83477 Rat</a> <a href="#">Entrez Gene 8915 Human</a><br><a href="#">O95999</a> |



[View online »](#)

**Background:**

This gene was identified by its translocation in a case of mucosa-associated lymphoid tissue (MALT) lymphoma. The protein encoded by this gene contains a caspase recruitment domain (CARD), and has been shown to induce apoptosis and to activate NF-kappaB. This protein is reported to interact with other CARD domain containing proteins including CARD9, 10, 11 and 14, which are thought to function as upstream regulators in NF-kappaB signaling. This protein is found to form a complex with MALT1, a protein encoded by another gene known to be translocated in MALT lymphoma. MALT1 and this protein are thought to synergize in the activation of NF-kappaB, and the deregulation of either of them may contribute to the same pathogenetic process that leads to the malignancy.

**Synonyms:**

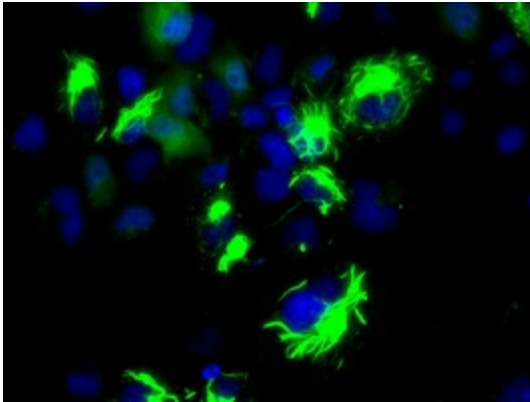
c-E10; CARMEN; CIPER; CLAP; IMD37; mE10

**Protein Families:**

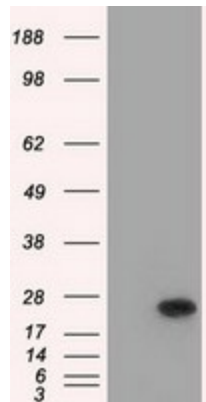
Druggable Genome

**Protein Pathways:**

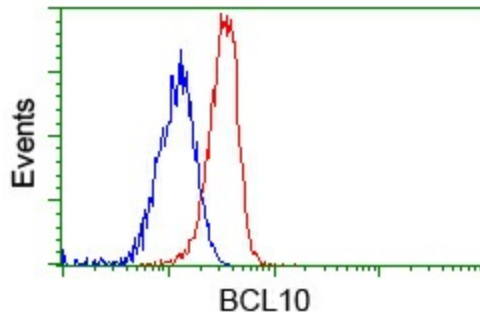
B cell receptor signaling pathway, T cell receptor signaling pathway

**Product images:**

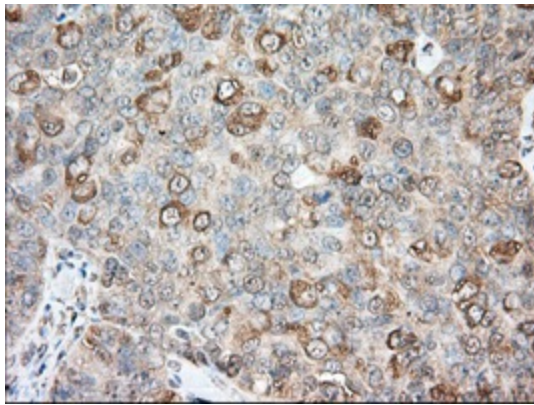
Anti-BCL10 mouse monoclonal antibody ([TA501237]) immunofluorescent staining of COS7 cells transiently transfected by pCMV6-ENTRY BCL10 ([RC208752]).



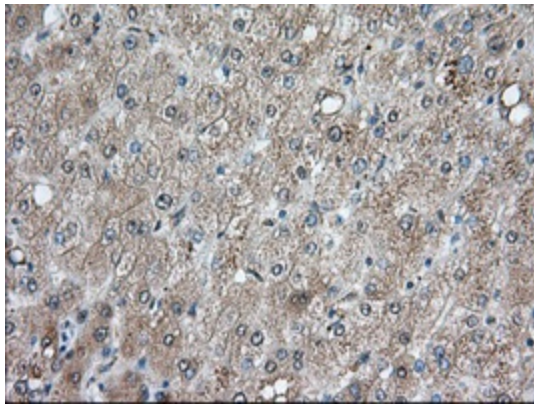
HEK293T cells were transfected with the pCMV6-ENTRY control (Left lane) or pCMV6-ENTRY BCL10 ([RC208752], Right lane) cDNA for 48 hrs and lysed. Equivalent amounts of cell lysates (5 ug per lane) were separated by SDS-PAGE and immunoblotted with anti-BCL10. Positive lysates [LY418351] (100ug) and [LC418351] (20ug) can be purchased separately from OriGene.



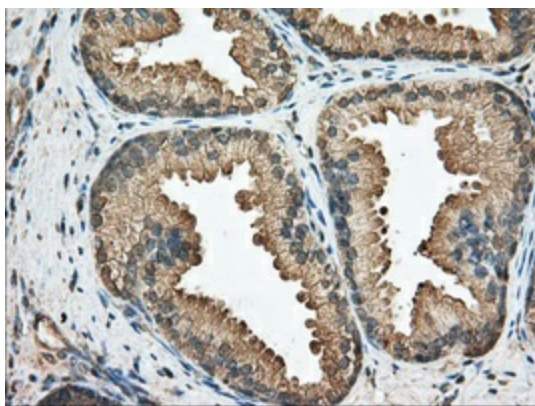
Flow cytometric Analysis of Jurkat cells, using anti-BCL10 antibody ([TA501237]), (Red), compared to a nonspecific negative control antibody (TA50011), (Blue).



Immunohistochemical staining of paraffin-embedded Adenocarcinoma of Human ovary tissue using anti-BCL10 mouse monoclonal antibody. (Heat-induced epitope retrieval by 10mM citric buffer, pH6.0, 100°C for 10min, [TA501237], Dilution 1:50)



Immunohistochemical staining of paraffin-embedded Human liver tissue within the normal limits using anti-BCL10 mouse monoclonal antibody. (Heat-induced epitope retrieval by 10mM citric buffer, pH6.0, 100°C for 10min, [TA501237], Dilution 1:50)



Immunohistochemical staining of paraffin-embedded Human prostate tissue within the normal limits using anti-BCL10 mouse monoclonal antibody. (Heat-induced epitope retrieval by 10mM citric buffer, pH6.0, 100°C for 10min, [TA501237], Dilution 1:50)