

## Product datasheet for **TA501229**

### **BMAL1 (ARNTL) Mouse Monoclonal Antibody [Clone ID: OTI1D1]**

#### **Product data:**

<b>Product Type:</b>	Primary Antibodies
<b>Clone Name:</b>	OTI1D1
<b>Applications:</b>	FC, IF, IHC, WB
<b>Recommended Dilution:</b>	WB 1:500, IF 1:100, FLOW 1:100
<b>Reactivity:</b>	Human, Mouse, Rat
<b>Host:</b>	Mouse
<b>Isotype:</b>	IgG1
<b>Clonality:</b>	Monoclonal
<b>Immunogen:</b>	Full length human recombinant protein of human ARNTL (NP_001169) produced in HEK293T cell.
<b>Formulation:</b>	PBS (pH 7.3) containing 1% BSA, 50% glycerol and 0.02% sodium azide.
<b>Concentration:</b>	1 mg/ml
<b>Purification:</b>	Purified from mouse ascites fluids or tissue culture supernatant by affinity chromatography (protein A/G)
<b>Conjugation:</b>	Unconjugated
<b>Storage:</b>	Store at -20°C as received.
<b>Stability:</b>	Stable for 12 months from date of receipt.
<b>Predicted Protein Size:</b>	68.5 kDa
<b>Gene Name:</b>	aryl hydrocarbon receptor nuclear translocator like
<b>Database Link:</b>	<a href="#">NP_001169</a> <a href="#">Entrez Gene 11865 Mouse</a> <a href="#">Entrez Gene 29657 Rat</a> <a href="#">Entrez Gene 406 Human</a> <a href="#">O00327</a>
<b>Background:</b>	The protein encoded by this gene is a basic helix-loop-helix protein that forms a heterodimer with CLOCK. This complex binds an E-box upstream of the PER1 gene, activating this gene and possibly other circadian rhythm-associated genes. Three transcript variants encoding two different isoforms have been found for this gene. [provided by RefSeq]
<b>Synonyms:</b>	bHLHe5; BMAL1; BMAL1c; JAP3; MOP3; PASD3; TIC

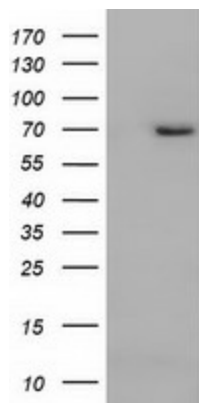


[View online »](#)

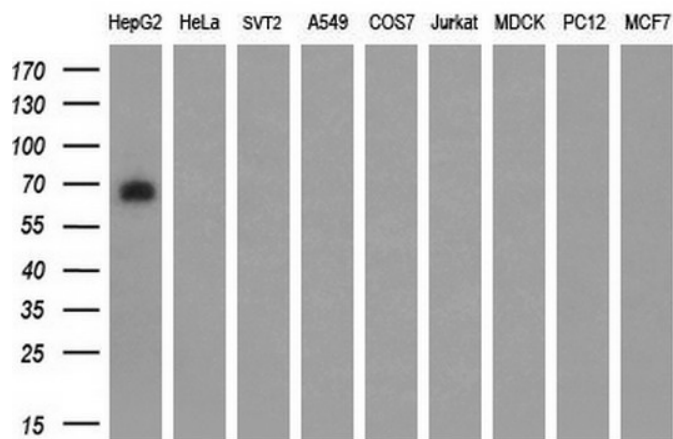
**Protein Families:** Druggable Genome, Transcription Factors

**Protein Pathways:** Circadian rhythm - mammal

**Product images:**



HEK293T cells were transfected with the pCMV6-ENTRY control (Left lane) or pCMV6-ENTRY ARNTL ([RC207870], Right lane) cDNA for 48 hrs and lysed. Equivalent amounts of cell lysates (5 ug per lane) were separated by SDS-PAGE and immunoblotted with anti-ARNTL. Positive lysates [LY400474] (100ug) and [LC400474] (20ug) can be purchased separately from OriGene.



Western blot analysis of extracts (35ug) from 9 different cell lines by using anti-ARNTL monoclonal antibody (HepG2: human; HeLa: human; SVT2: mouse; A549: human; COS7: monkey; Jurkat: human; MDCK: canine; PC12: rat; MCF7: human) (1:200).

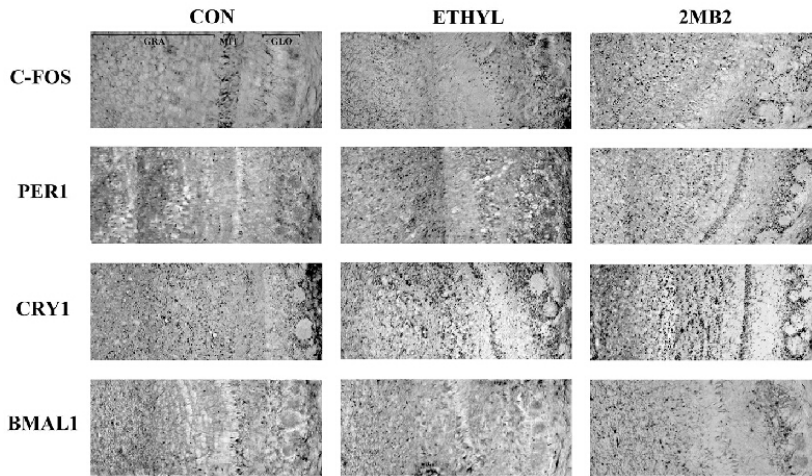
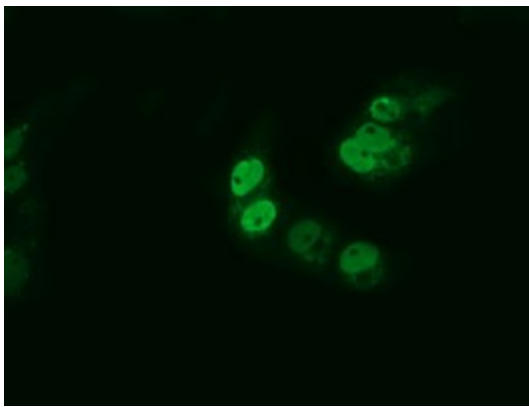
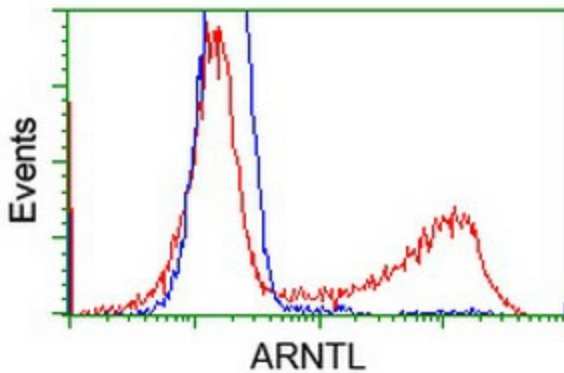


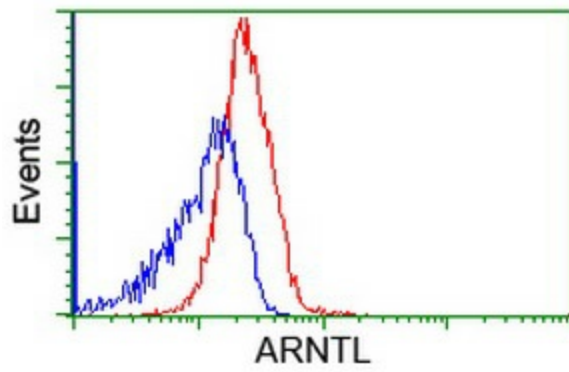
Figure from citation: Immunohistochemistry of ARNTL (BMAL1) protein level by using anti-ARNTL antibody in coronal sections of the main olfactory bulb (MOB) portion of 7-day-old rabbits. Dilution: 1:200 [View Citation](#). Heat-induced epitope retrieval by EDTA solution buffer pH 8.0 at 120°C for 3 min.



Anti-ARNTL mouse monoclonal antibody (TA501229) immunofluorescent staining of COS7 cells transiently transfected by pCMV6-ENTRY ARNTL ([RC207870]).



HEK293T cells transfected with either [RC207870] overexpress plasmid (Red) or empty vector control plasmid (Blue) were immunostained by anti-ARNTL antibody (TA501229), and then analyzed by flow cytometry.



Flow cytometric Analysis of Jurkat cells, using anti-ARNTL antibody (TA501229), (Red), compared to a nonspecific negative control antibody (TA50011), (Blue).