

## Product datasheet for **TA501227AM**

### **BMAL1 (ARNTL) Mouse Monoclonal Antibody (Biotin conjugated) [Clone ID: OTI1H6]**

#### **Product data:**

<b>Product Type:</b>	Primary Antibodies
<b>Clone Name:</b>	OTI1H6
<b>Applications:</b>	IHC, WB
<b>Recommended Dilution:</b>	WB 1:4000, IHC 1:150
<b>Reactivity:</b>	Human, Mouse, Rat
<b>Host:</b>	Mouse
<b>Isotype:</b>	IgG1
<b>Clonality:</b>	Monoclonal
<b>Immunogen:</b>	Full length human recombinant protein of human ARNTL(NP_001169) produced in HEK293T cell.
<b>Formulation:</b>	PBS (pH 7.3) containing 1% BSA, 50% glycerol and 0.02% sodium azide.
<b>Concentration:</b>	0.5 mg/ml
<b>Purification:</b>	Purified from mouse ascites fluids or tissue culture supernatant by affinity chromatography (protein A/G)
<b>Conjugation:</b>	Biotin
<b>Storage:</b>	Store at -20°C as received.
<b>Stability:</b>	Stable for 12 months from date of receipt.
<b>Predicted Protein Size:</b>	68.5 kDa
<b>Gene Name:</b>	aryl hydrocarbon receptor nuclear translocator like
<b>Database Link:</b>	<a href="#">NP_001169</a> <a href="#">Entrez Gene 11865 Mouse</a> <a href="#">Entrez Gene 29657 Rat</a> <a href="#">Entrez Gene 406 Human</a> <a href="#">O00327</a>
<b>Background:</b>	The protein encoded by this gene is a basic helix-loop-helix protein that forms a heterodimer with CLOCK. This complex binds an E-box upstream of the PER1 gene, activating this gene and possibly other circadian rhythm-associated genes. Three transcript variants encoding two different isoforms have been found for this gene. [provided by RefSeq, Jul 2008]
<b>Synonyms:</b>	bHLHe5; BMAL1; BMAL1c; JAP3; MOP3; PASD3; TIC

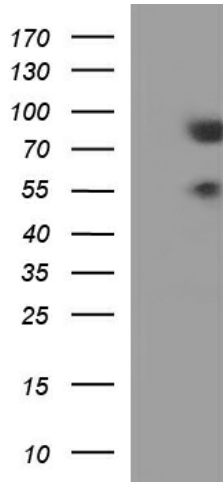


[View online »](#)

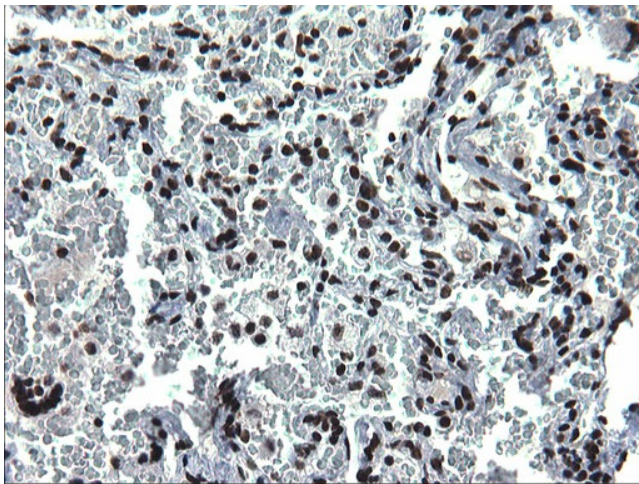
**Protein Families:** Druggable Genome, Transcription Factors

**Protein Pathways:** Circadian rhythm - mammal

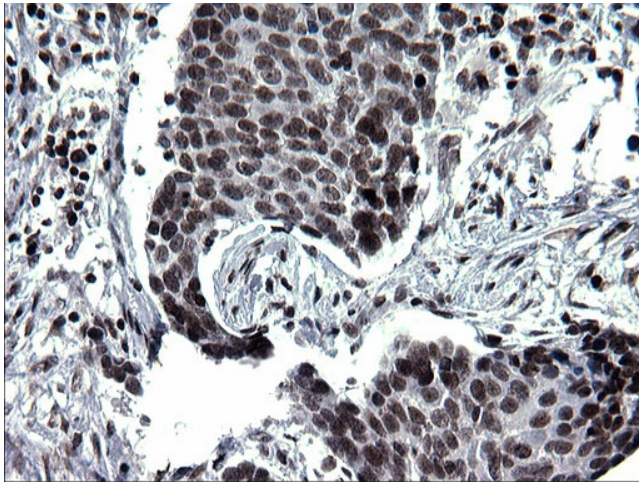
**Product images:**



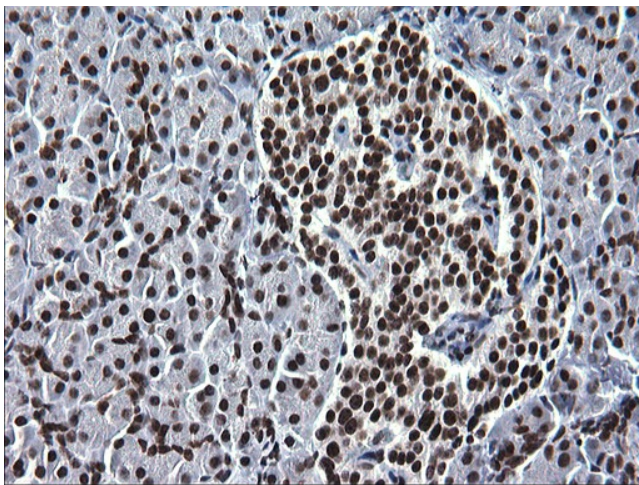
HEK293T cells were transfected with the pCMV6-ENTRY control (Left lane) or pCMV6-ENTRY ARNTL ([RC207870], Right lane) cDNA for 48 hrs and lysed. Equivalent amounts of cell lysates (5 ug per lane) were separated by SDS-PAGE and immunoblotted with anti-ARNTL. Positive lysates [LY400474] (100ug) and [LC400474] (20ug) can be purchased separately from OriGene.



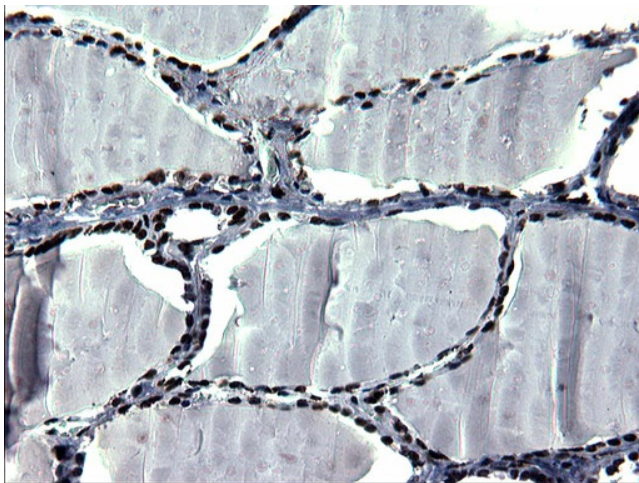
Immunohistochemical staining of paraffin-embedded Human lung tissue within the normal limits using anti-ARNTL mouse monoclonal antibody. (Heat-induced epitope retrieval by 1mM EDTA in 10mM Tris, pH8.5, 120°C for 3min, [TA501227])



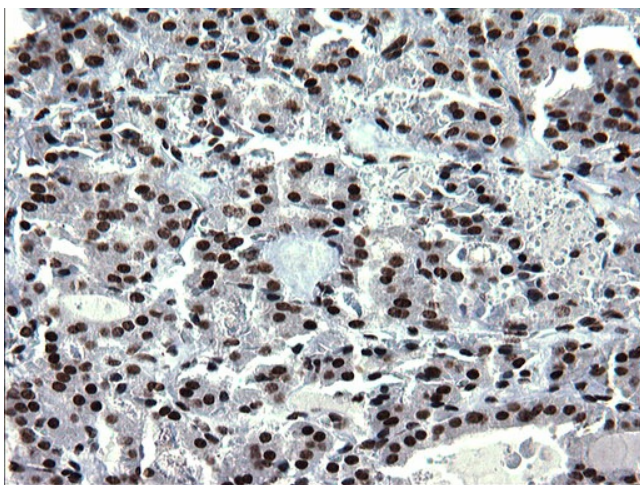
Immunohistochemical staining of paraffin-embedded Carcinoma of Human lung tissue using anti-ARNTL mouse monoclonal antibody. (Heat-induced epitope retrieval by 1mM EDTA in 10mM Tris, pH8.5, 120°C for 3min, [TA501227])



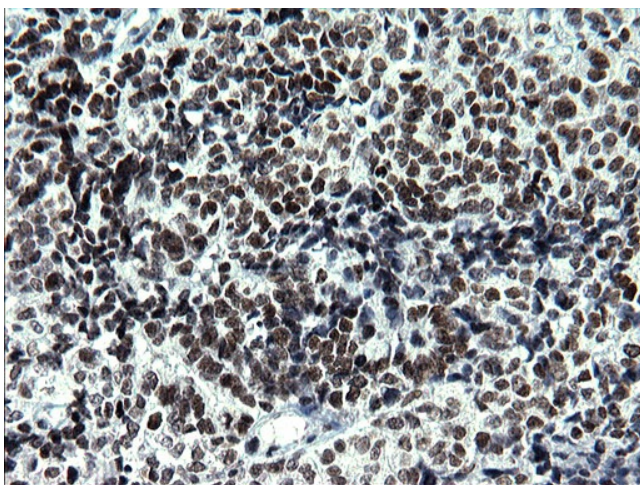
Immunohistochemical staining of paraffin-embedded Human pancreas tissue within the normal limits using anti-ARNTL mouse monoclonal antibody. (Heat-induced epitope retrieval by 1mM EDTA in 10mM Tris, pH8.5, 120°C for 3min, [TA501227])



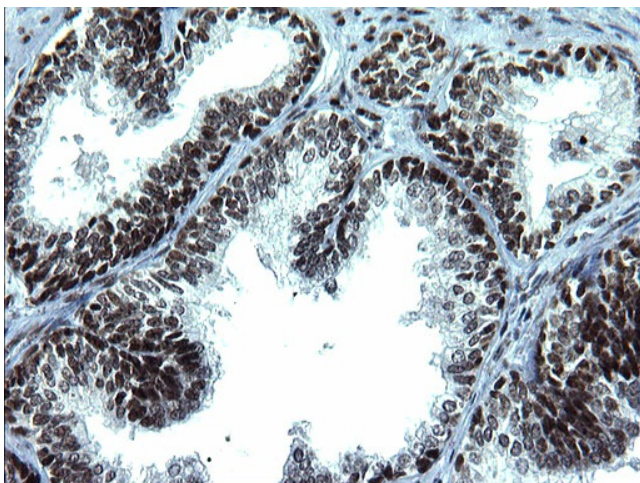
Immunohistochemical staining of paraffin-embedded Human thyroid tissue within the normal limits using anti-ARNTL mouse monoclonal antibody. (Heat-induced epitope retrieval by 1mM EDTA in 10mM Tris, pH8.5, 120°C for 3min, [TA501227])



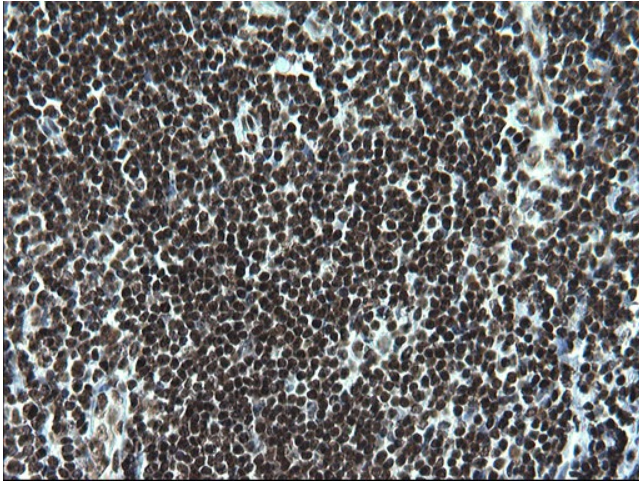
Immunohistochemical staining of paraffin-embedded Carcinoma of Human thyroid tissue using anti-ARNTL mouse monoclonal antibody. (Heat-induced epitope retrieval by 1mM EDTA in 10mM Tris, pH8.5, 120°C for 3min, [TA501227])



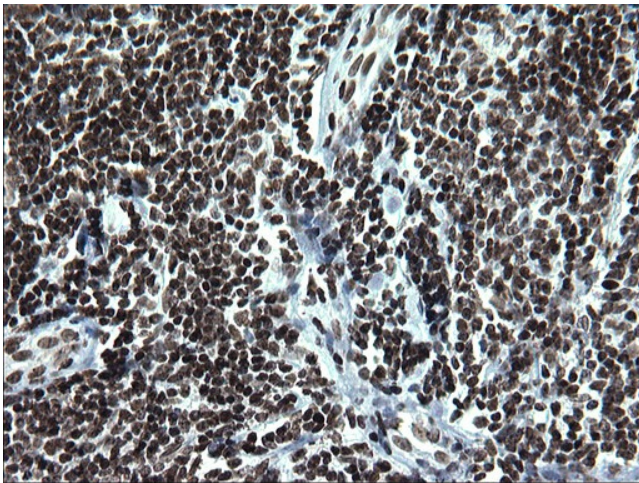
Immunohistochemical staining of paraffin-embedded Adenocarcinoma of Human endometrium tissue using anti-ARNTL mouse monoclonal antibody. (Heat-induced epitope retrieval by 1mM EDTA in 10mM Tris, pH8.5, 120°C for 3min, [TA501227])



Immunohistochemical staining of paraffin-embedded Human prostate tissue within the normal limits using anti-ARNTL mouse monoclonal antibody. (Heat-induced epitope retrieval by 1mM EDTA in 10mM Tris, pH8.5, 120°C for 3min, [TA501227])



Immunohistochemical staining of paraffin-embedded Human lymph node tissue within the normal limits using anti-ARNTL mouse monoclonal antibody. (Heat-induced epitope retrieval by 1mM EDTA in 10mM Tris, pH8.5, 120°C for 3min, [TA501227])



Immunohistochemical staining of paraffin-embedded Human lymphoma tissue using anti-ARNTL mouse monoclonal antibody. (Heat-induced epitope retrieval by 1mM EDTA in 10mM Tris, pH8.5, 120°C for 3min, [TA501227])