

## Product datasheet for **TA501227**

### **BMAL1 (ARNTL) Mouse Monoclonal Antibody [Clone ID: OT11H6]**

#### **Product data:**

Product Type:	Primary Antibodies
Clone Name:	OT11H6
Applications:	IHC, WB
Recommended Dilution:	WB 1:4000, IHC 1:150
Reactivity:	Human, Mouse, Rat
Host:	Mouse
Isotype:	IgG1
Clonality:	Monoclonal
Immunogen:	Full length human recombinant protein of human ARNTL(NP_001169) produced in HEK293T cell.
Formulation:	PBS (pH 7.3) containing 1% BSA, 50% glycerol and 0.02% sodium azide.
Concentration:	1 mg/ml
Purification:	Purified from mouse ascites fluids or tissue culture supernatant by affinity chromatography (protein A/G)
Conjugation:	Unconjugated
Storage:	Store at -20°C as received.
Stability:	Stable for 12 months from date of receipt.
Predicted Protein Size:	68.5 kDa
Gene Name:	aryl hydrocarbon receptor nuclear translocator like
Database Link:	<a href="#">NP_001169</a> <a href="#">Entrez Gene 11865 Mouse</a> <a href="#">Entrez Gene 29657 Rat</a> <a href="#">Entrez Gene 406 Human</a> <a href="#">O00327</a>
Background:	The protein encoded by this gene is a basic helix-loop-helix protein that forms a heterodimer with CLOCK. This complex binds an E-box upstream of the PER1 gene, activating this gene and possibly other circadian rhythm-associated genes. Three transcript variants encoding two different isoforms have been found for this gene. [provided by RefSeq, Jul 2008]
Synonyms:	bHLHe5; BMAL1; BMAL1c; JAP3; MOP3; PASD3; TIC



[View online »](#)

**Note:** WB application: Only overexpression results are guaranteed, not endogenous

**Protein Families:** Druggable Genome, Transcription Factors

**Protein Pathways:** Circadian rhythm - mammal

### Product images:

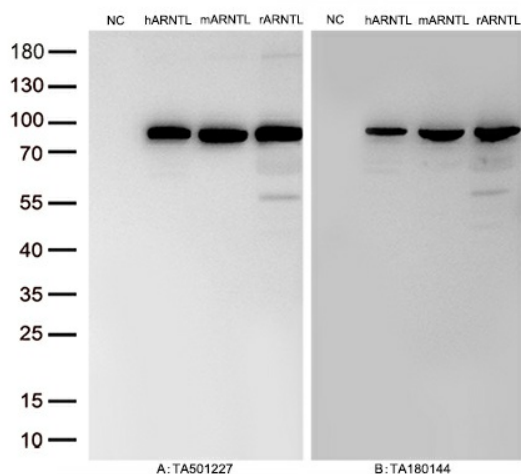
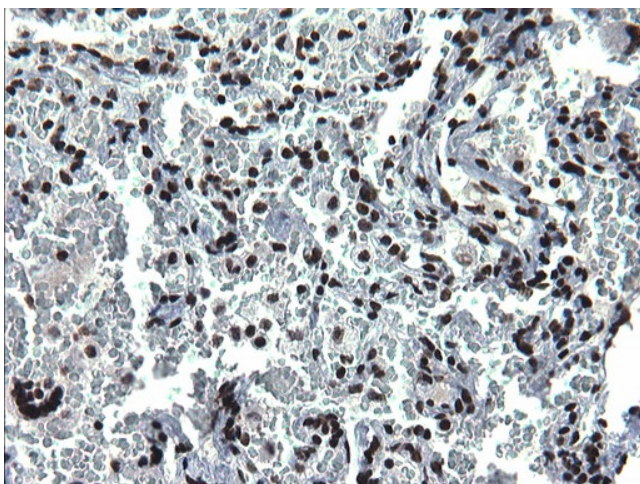
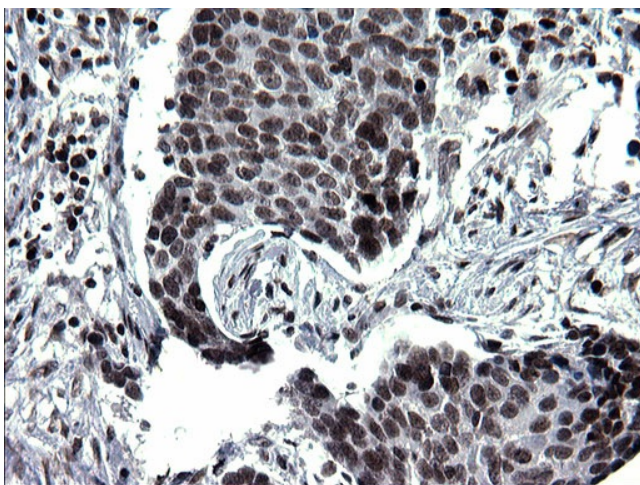


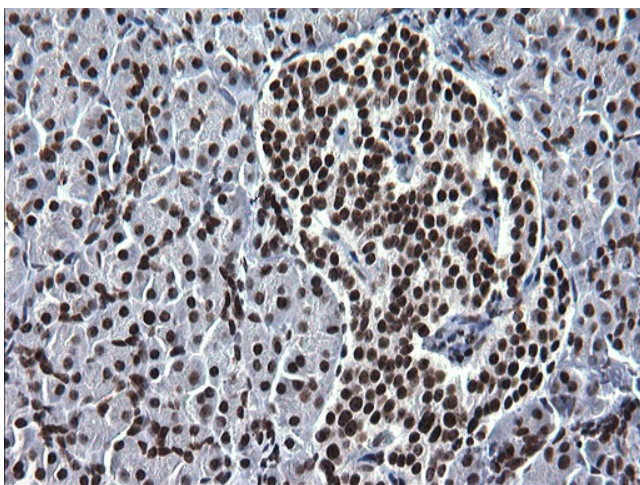
Figure A, Western blot analysis of overexpressed lysates (15ug per lane) from HEK293T cells transfected with empty plasmid ([PS100001], NC), human ARNTL plasmid ([RC207870], hARNTL), mouse ARNTL plasmid ([MR209553], mARNTL), rat ARNTL plasmid ([RR210481], rARNTL) using anti-ARNTL antibody TA501227 (1:5000@1mg/ml). Figure B, Western blot analysis of the same samples as figure A with anti-DDK antibody ([TA180144], 1:5000@1mg/ml).



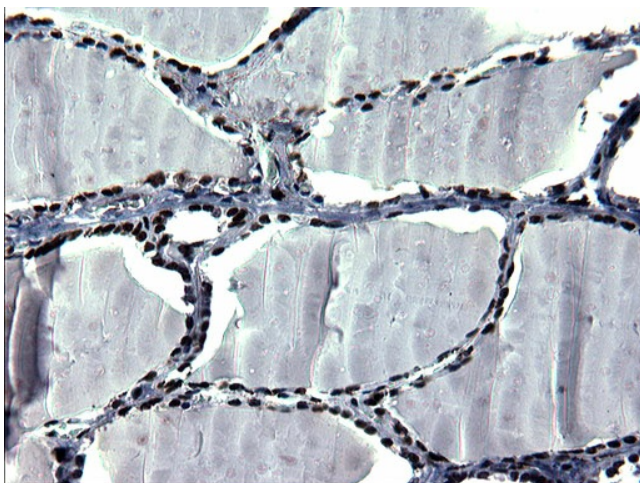
Immunohistochemical staining of paraffin-embedded Human lung tissue within the normal limits using anti-ARNTL mouse monoclonal antibody. Heat-induced epitope retrieval by EDTA solution buffer pH 8.0 at 120°C for 3 min.



Immunohistochemical staining of paraffin-embedded Carcinoma of Human lung tissue using anti-ARNTL mouse monoclonal antibody. Heat-induced epitope retrieval by EDTA solution buffer pH 8.0 at 120°C for 3 min.

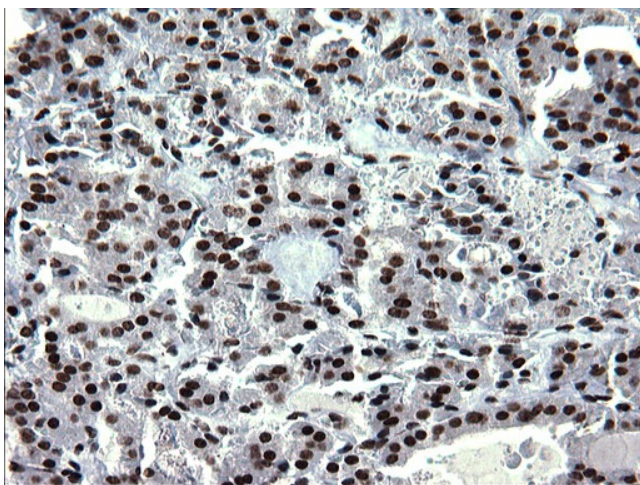


Immunohistochemical staining of paraffin-embedded Human pancreas tissue within the normal limits using anti-ARNTL mouse monoclonal antibody. Heat-induced epitope retrieval by EDTA solution buffer pH 8.0 at 120°C for 3 min.

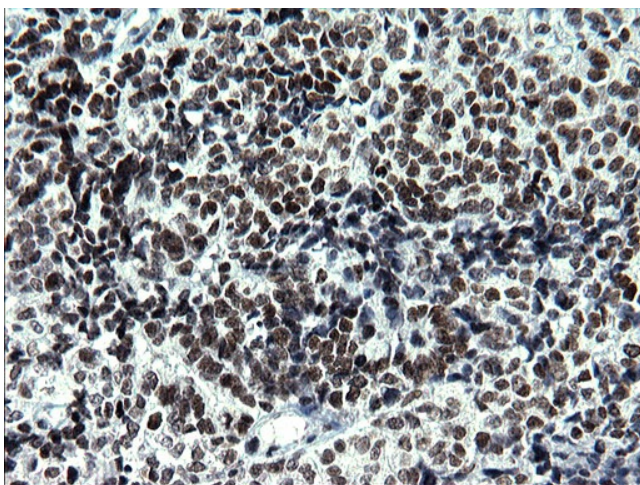


Immunohistochemical staining of paraffin-embedded Human thyroid tissue within the normal limits using anti-ARNTL mouse monoclonal antibody. Heat-induced epitope retrieval by EDTA solution buffer pH 8.0 at 120°C for 3 min.

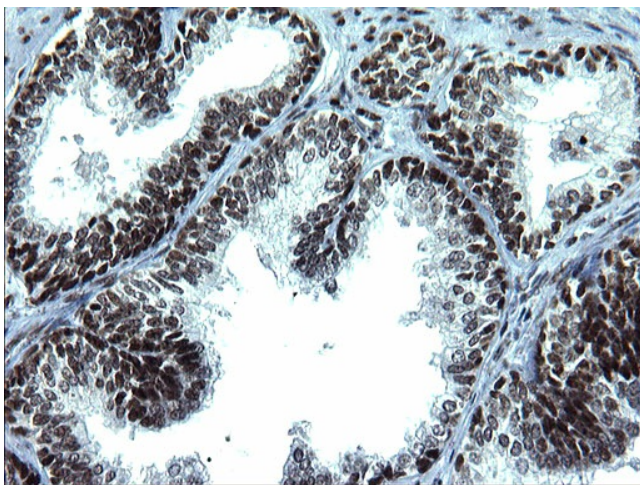




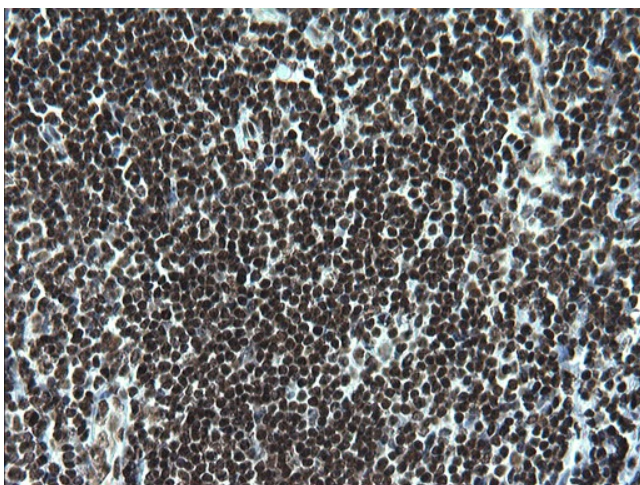
Immunohistochemical staining of paraffin-embedded Carcinoma of Human thyroid tissue using anti-ARNTL mouse monoclonal antibody. Heat-induced epitope retrieval by EDTA solution buffer pH 8.0 at 120°C for 3 min.



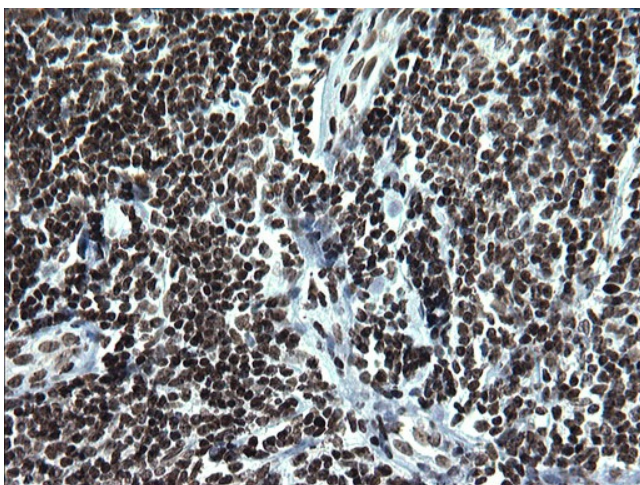
Immunohistochemical staining of paraffin-embedded Adenocarcinoma of Human endometrium tissue using anti-ARNTL mouse monoclonal antibody. Heat-induced epitope retrieval by EDTA solution buffer pH 8.0 at 120°C for 3 min.



Immunohistochemical staining of paraffin-embedded Human prostate tissue within the normal limits using anti-ARNTL mouse monoclonal antibody. Heat-induced epitope retrieval by EDTA solution buffer pH 8.0 at 120°C for 3 min.



Immunohistochemical staining of paraffin-embedded Human lymph node tissue within the normal limits using anti-ARNTL mouse monoclonal antibody. Heat-induced epitope retrieval by EDTA solution buffer pH 8.0 at 120°C for 3 min.



Immunohistochemical staining of paraffin-embedded Human lymphoma tissue using anti-ARNTL mouse monoclonal antibody. Heat-induced epitope retrieval by EDTA solution buffer pH 8.0 at 120°C for 3 min.