

Product datasheet for **TA501222AM**

ACAT2 Mouse Monoclonal Antibody (Biotin conjugated) [Clone ID: OTI3E2]

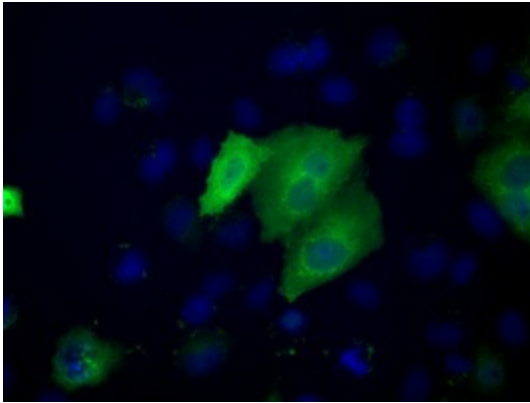
Product data:

Product Type:	Primary Antibodies
Clone Name:	OTI3E2
Applications:	FC, IF, IHC, WB
Recommended Dilution:	WB 1:1000~2000, IHC 1:50, IF 1:100, FLOW 1:100
Reactivity:	Human, Dog, Rat, Monkey, Mouse
Host:	Mouse
Isotype:	IgG2b
Clonality:	Monoclonal
Immunogen:	Full length human recombinant protein of human ACAT2(NP_005882) produced in HEK293T cell.
Formulation:	PBS (pH 7.3) containing 1% BSA, 50% glycerol and 0.02% sodium azide.
Concentration:	0.5 mg/ml
Purification:	Purified from mouse ascites fluids or tissue culture supernatant by affinity chromatography (protein A/G)
Conjugation:	Biotin
Storage:	Store at -20°C as received.
Stability:	Stable for 12 months from date of receipt.
Predicted Protein Size:	41.2 kDa
Gene Name:	acetyl-CoA acetyltransferase 2
Database Link:	NP_005882 Entrez Gene 308100 Rat Entrez Gene 484063 Dog Entrez Gene 100427660 Monkey Entrez Gene 39 Human Q9BWD1
Background:	The product of this gene is an enzyme involved in lipid metabolism, and it encodes cytosolic acetoacetyl-CoA thiolase. This gene shows complementary overlapping with the 3-prime region of the TCP1 gene in both mouse and human. These genes are encoded on opposite strands of DNA, as well as in opposite transcriptional orientation.

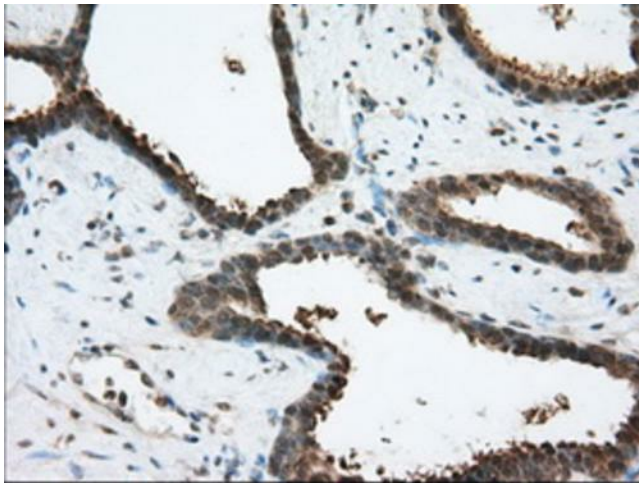


[View online »](#)

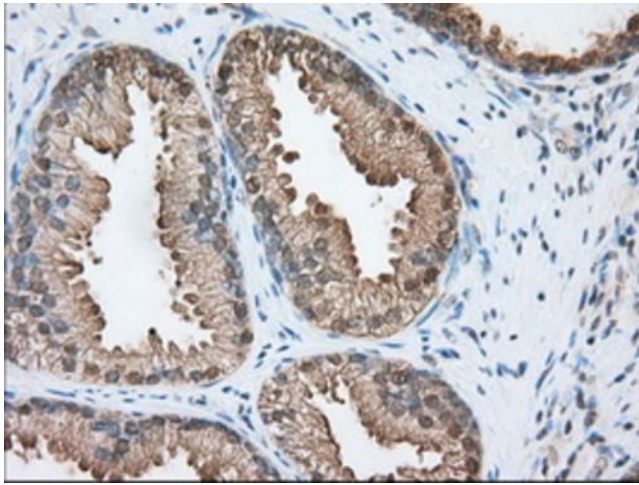
Synonyms:	acetoacetyl Coenzyme A thiolase; acetyl-Coenzyme A acetyltransferase 2; cytosolic acetoacetyl-CoA thiolase; OTTHUMP00000017527
Protein Families:	Druggable Genome
Protein Pathways:	Butanoate metabolism, Fatty acid metabolism, Lysine degradation, Metabolic pathways, Propanoate metabolism, Pyruvate metabolism, Synthesis and degradation of ketone bodies, Terpenoid backbone biosynthesis, Tryptophan metabolism, Valine, leucine and isoleucine degradation

Product images:

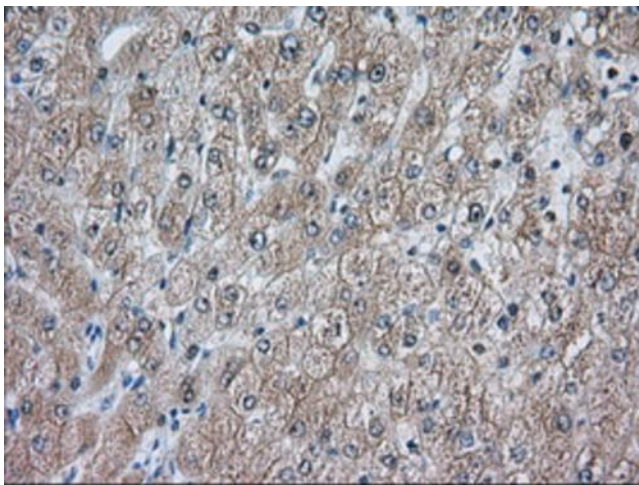
Anti-ACAT2 mouse monoclonal antibody ([TA501222]) immunofluorescent staining of COS7 cells transiently transfected by pCMV6-ENTRY ACAT2 ([RC201821]).



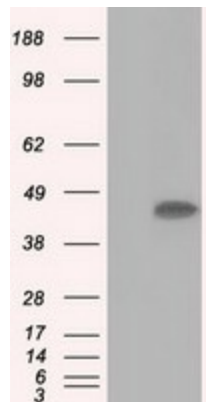
Immunohistochemical staining of paraffin-embedded Carcinoma of Human prostate tissue using anti-ACAT2 mouse monoclonal antibody. (Heat-induced epitope retrieval by 10mM citric buffer, pH6.0, 100°C for 10min, [TA501222], Dilution 1:50)



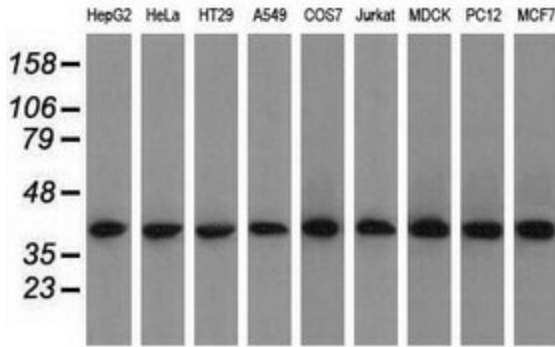
Immunohistochemical staining of paraffin-embedded Human prostate tissue within the normal limits using anti-ACAT2 mouse monoclonal antibody. (Heat-induced epitope retrieval by 10mM citric buffer, pH6.0, 100°C for 10min, [TA501222], Dilution 1:50)



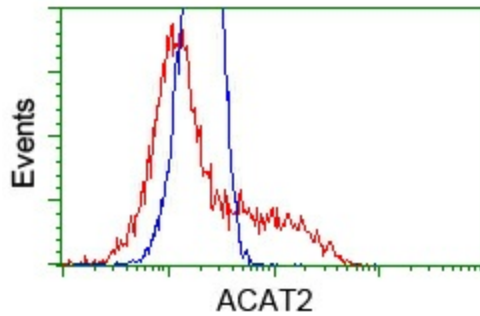
Immunohistochemical staining of paraffin-embedded Human liver tissue within the normal limits using anti-ACAT2 mouse monoclonal antibody. (Heat-induced epitope retrieval by 10mM citric buffer, pH6.0, 100°C for 10min, [TA501222], Dilution 1:50)



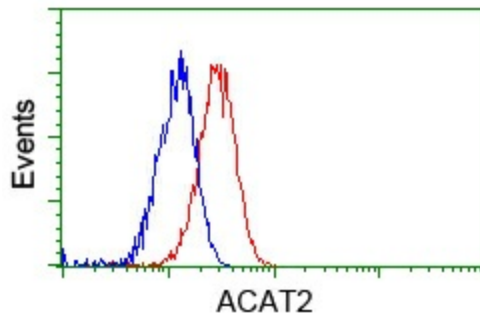
HEK293T cells were transfected with the pCMV6-ENTRY control (Left lane) or pCMV6-ENTRY ACAT2 ([RC201821], Right lane) cDNA for 48 hrs and lysed. Equivalent amounts of cell lysates (5 ug per lane) were separated by SDS-PAGE and immunoblotted with anti-ACAT2. Positive lysates [LY417006] (100ug) and [LC417006] (20ug) can be purchased separately from OriGene.



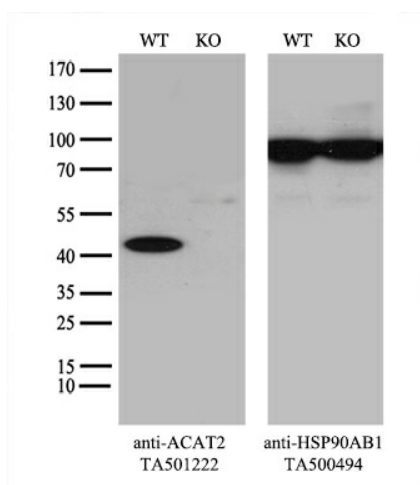
Western blot analysis of extracts (35ug) from 9 different cell lines by using anti-ACAT2 monoclonal antibody.



HEK293T cells transfected with either [RC201821] overexpress plasmid (Red) or empty vector control plasmid (Blue) were immunostained by anti-ACAT2 antibody ([TA501222]), and then analyzed by flow cytometry.



Flow cytometric Analysis of Jurkat cells, using anti-ACAT2 antibody ([TA501222]), (Red), compared to a nonspecific negative control antibody (TA50011), (Blue).



Equivalent amounts of cell lysates (10 ug per lane) of wild-type HeLa cells (WT, Cat# LC810HELA) and ACAT2-Knockout HeLa cells (KO, Cat# [LC832703]) were separated by SDS-PAGE and immunoblotted with anti-ACAT2 monoclonal antibody [TA501222] (1:1000). Then the blotted membrane was stripped and reprobed with anti-HSP90 antibody as a loading control.