

## Product datasheet for **TA501221**

### ACAT2 Mouse Monoclonal Antibody [Clone ID: OTI7B1]

#### Product data:

Product Type:	Primary Antibodies
Clone Name:	OTI7B1
Applications:	FC, IF, IHC, WB
Recommended Dilution:	WB 1:1000~2000, IHC 1:150, IF 1:100, FLOW 1:100
Reactivity:	Human, Mouse, Rat, Dog
Host:	Mouse
Isotype:	IgG1
Clonality:	Monoclonal
Immunogen:	Full length human recombinant protein of human ACAT2 (NP_0058826) produced in HEK293T cell.
Formulation:	PBS (PH 7.3) containing 1% BSA, 50% glycerol and 0.02% sodium azide.
Concentration:	1 mg/ml
Purification:	Purified from mouse ascites fluids or tissue culture supernatant by affinity chromatography (protein A/G)
Conjugation:	Unconjugated
Storage:	Store at -20°C as received.
Stability:	Stable for 12 months from date of receipt.
Predicted Protein Size:	41.2 kDa
Gene Name:	acetyl-CoA acetyltransferase 2
Database Link:	<a href="#">NP_005882</a> <a href="#">Entrez Gene 308100 Rat</a> <a href="#">Entrez Gene 484063 Dog</a> <a href="#">Entrez Gene 39 Human</a> <a href="#">Q9BWD1</a>
Background:	The product of this gene is an enzyme involved in lipid metabolism, and it encodes cytosolic acetoacetyl-CoA thiolase. This gene shows complementary overlapping with the 3-prime region of the TCP1 gene in both mouse and human. These genes are encoded on opposite strands of DNA, as well as in opposite transcriptional orientation. [provided by RefSeq]



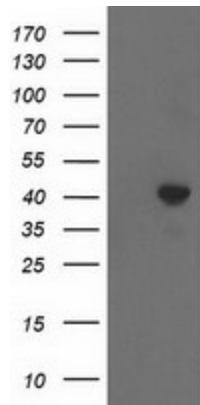
[View online »](#)

**Synonyms:** acetoacetyl Coenzyme A thiolase; acetyl-Coenzyme A acetyltransferase 2; cytosolic acetoacetyl-CoA thiolase; OTTHUMP00000017527

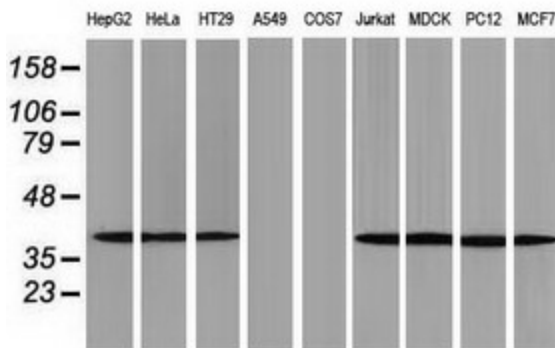
**Protein Families:** Druggable Genome

**Protein Pathways:** Butanoate metabolism, Fatty acid metabolism, Lysine degradation, Metabolic pathways, Propanoate metabolism, Pyruvate metabolism, Synthesis and degradation of ketone bodies, Terpenoid backbone biosynthesis, Tryptophan metabolism, Valine, leucine and isoleucine degradation

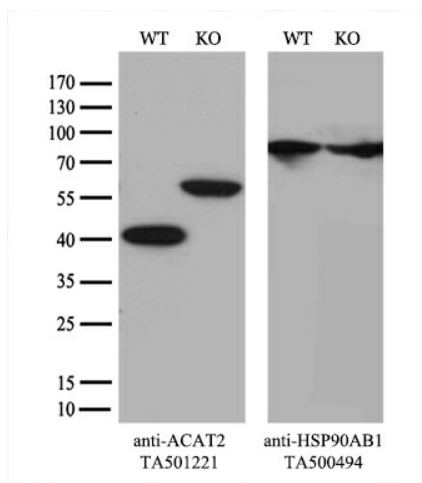
**Product images:**



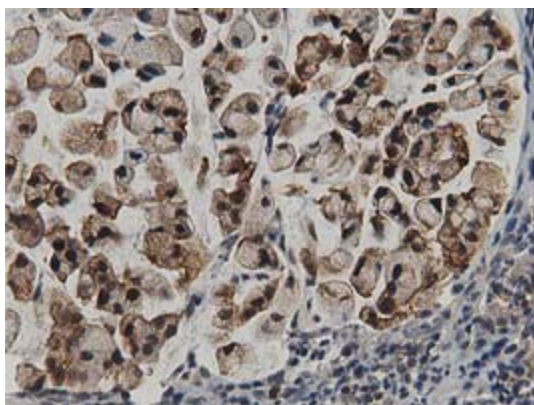
HEK293T cells were transfected with the pCMV6-ENTRY control (Cat# [PS100001], Left lane) or pCMV6-ENTRY ACAT2 (Cat# [RC201821], Right lane) cDNA for 48 hrs and lysed. Equivalent amounts of cell lysates (5 ug per lane) were separated by SDS-PAGE and immunoblotted with anti-ACAT2(Cat# TA501221). Positive lysates [LY417006] (100ug) and [LC417006] (20ug) can be purchased separately from OriGene.



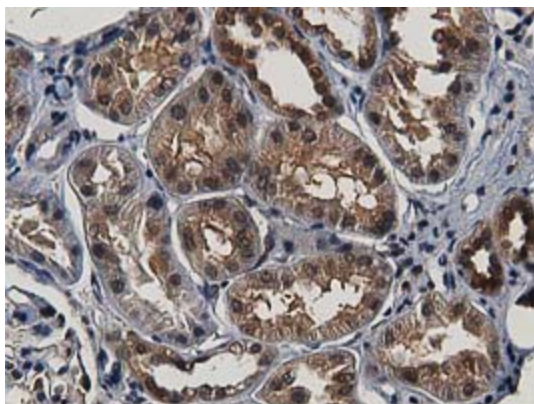
Western blot analysis of extracts (35ug) from 9 different cell lines by using anti-ACAT2 monoclonal antibody.



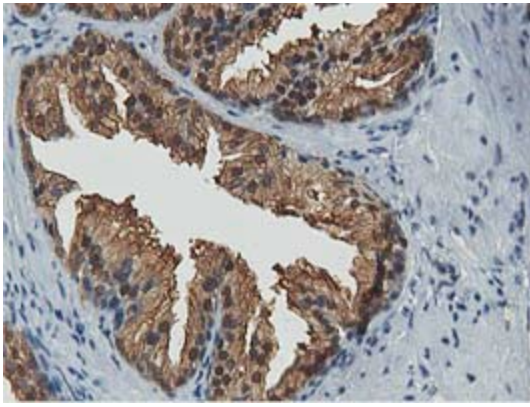
Equivalent amounts of cell lysates (10 ug per lane) of wild-type HeLa cells (WT, Cat# LC810HELA) and ACAT2-Knockout HeLa cells (KO, Cat# [LC832703]) were separated by SDS-PAGE and immunoblotted with anti-ACAT2 monoclonal antibody TA501221 (1:1000 `). Then the blotted membrane was stripped and reprobed with anti-HSP90 antibody as a loading control.



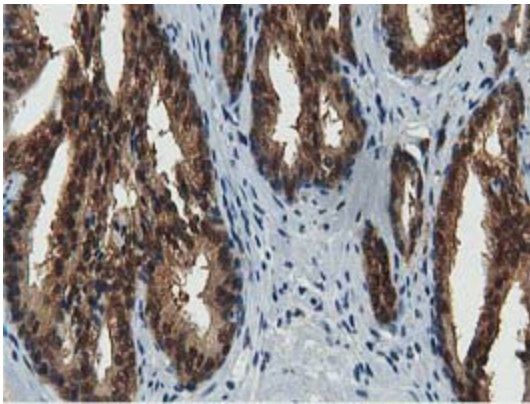
Immunohistochemical staining of paraffin-embedded Adenocarcinoma of Human colon tissue using anti-ACAT2 mouse monoclonal antibody. (Heat-induced epitope retrieval by 10mM citric buffer, pH6.0, 100°C for 10min, TA501221)



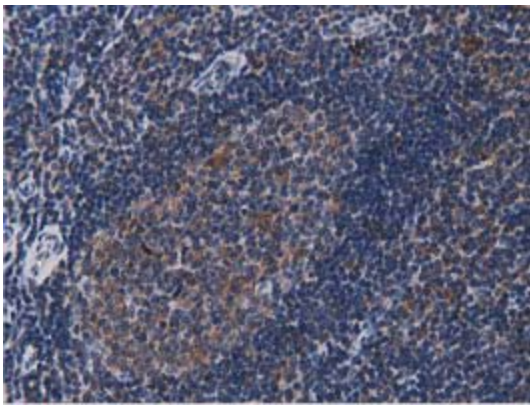
Immunohistochemical staining of paraffin-embedded Human Kidney tissue within the normal limits using anti-ACAT2 mouse monoclonal antibody. (Heat-induced epitope retrieval by 10mM citric buffer, pH6.0, 100°C for 10min, TA501221)



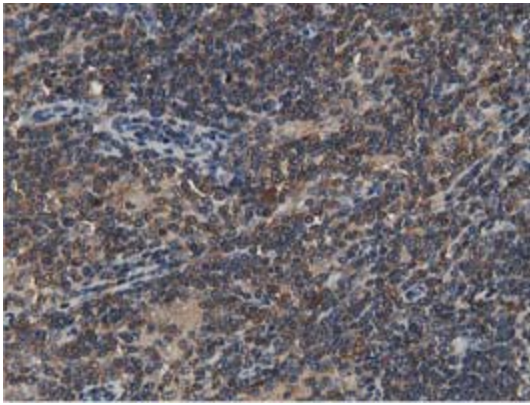
Immunohistochemical staining of paraffin-embedded Human prostate tissue within the normal limits using anti-ACAT2 mouse monoclonal antibody. (Heat-induced epitope retrieval by 10mM citric buffer, pH6.0, 100°C for 10min, TA501221)



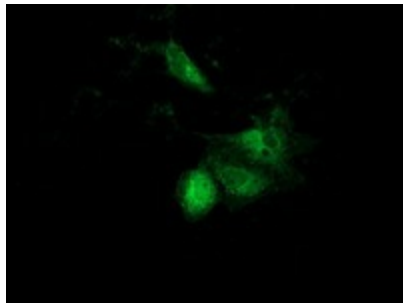
Immunohistochemical staining of paraffin-embedded Carcinoma of Human prostate tissue using anti-ACAT2 mouse monoclonal antibody. (Heat-induced epitope retrieval by 10mM citric buffer, pH6.0, 100°C for 10min, TA501221)



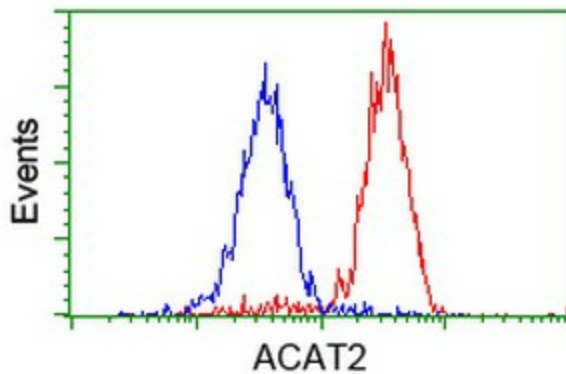
Immunohistochemical staining of paraffin-embedded Human lymph node tissue within the normal limits using anti-ACAT2 mouse monoclonal antibody. (Heat-induced epitope retrieval by 10mM citric buffer, pH6.0, 100°C for 10min, TA501221)



Immunohistochemical staining of paraffin-embedded Human lymphoma tissue using anti-ACAT2 mouse monoclonal antibody. (Heat-induced epitope retrieval by 10mM citric buffer, pH6.0, 100°C for 10min, TA501221)



Anti-ACAT2 mouse monoclonal antibody (TA501221) immunofluorescent staining of COS7 cells transiently transfected by pCMV6-ENTRY ACAT2 ([RC201821]).



Flow cytometric Analysis of HeLa cells, using anti-ACAT2 antibody (TA501221), (Red), compared to a nonspecific negative control antibody (TA50011), (Blue).