

Product datasheet for **TA501212BM**

CD147 (BSG) Mouse Monoclonal Antibody (HRP conjugated) [Clone ID: OTI4E4]

Product data:

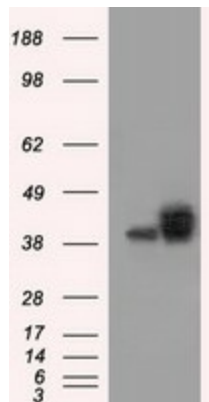
Product Type:	Primary Antibodies
Clone Name:	OTI4E4
Applications:	FC, IF, IHC, WB
Recommended Dilution:	WB 1:200 - 1:2000, IHC 1:50, IF 1:100, FLOW 1:100
Reactivity:	Human
Host:	Mouse
Isotype:	IgG2b
Clonality:	Monoclonal
Immunogen:	Full length human recombinant protein of human BSG(NP_001719) produced in HEK293T cell.
Formulation:	PBS (pH 7.3) containing 1% BSA, 50% glycerol.
Concentration:	0.5 mg/ml
Purification:	Purified from mouse ascites fluids or tissue culture supernatant by affinity chromatography (protein A/G)
Conjugation:	HRP
Storage:	Store at -20°C as received.
Stability:	Stable for 12 months from date of receipt.
Predicted Protein Size:	40.2 kDa
Gene Name:	basigin (Ok blood group)
Database Link:	NP_001719 Entrez Gene 682 Human P35613
Background:	The protein encoded by this gene is a plasma membrane protein that is important in spermatogenesis, embryo implantation, neural network formation, and tumor progression. The encoded protein is also a member of the immunoglobulin superfamily. Multiple transcript variants encoding different isoforms have been found for this gene.
Synonyms:	5F7; CD147; EMMPRIN; OK; TCSF



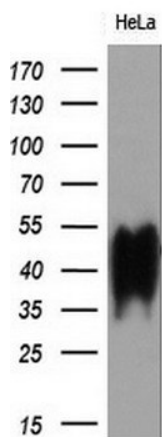
[View online »](#)

Protein Families: Druggable Genome, ES Cell Differentiation/IPS, Transmembrane

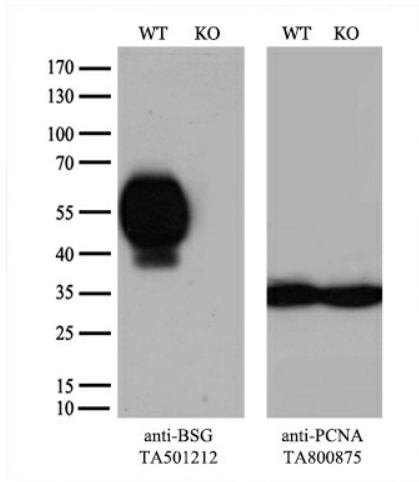
Product images:



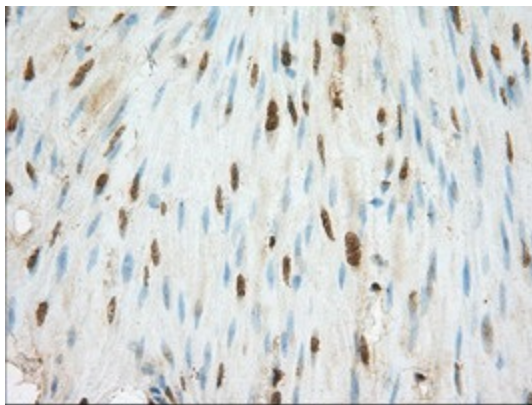
HEK293T cells were transfected with the pCMV6-ENTRY control (Left lane) or pCMV6-ENTRY BSG ([RC219464], Right lane) cDNA for 48 hrs and lysed. Equivalent amounts of cell lysates (5 ug per lane) were separated by SDS-PAGE and immunoblotted with anti-BSG. Positive lysates [LY419777] (100ug) and [LC419777] (20ug) can be purchased separately from OriGene.



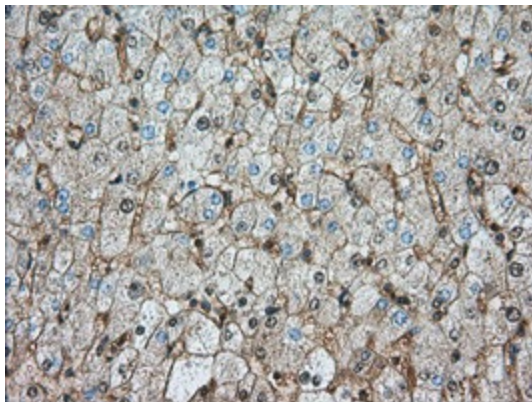
Western blot analysis of extracts (10ug) from 1 cell line by using anti-BSG monoclonal antibody at 1:200.



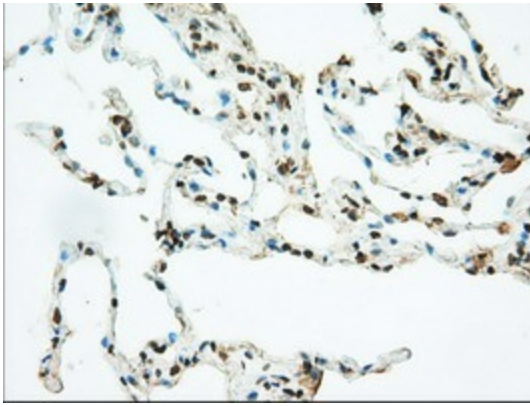
Equivalent amounts of cell lysates (10 ug per lane) of wild-type 293T cells (WT, Cat# LC810293T) and BSG-Knockout 293T cells (KO, Cat# [LC810433]) were separated by SDS-PAGE and immunoblotted with anti-BSG monoclonal antibody [TA501212] (1:2000). Then the blotted membrane was stripped and reprobed with anti-PCNA antibody as a loading control.



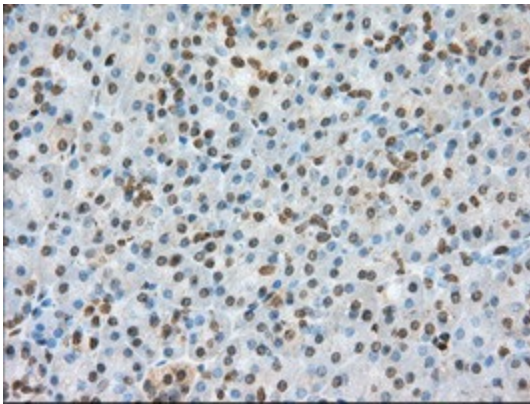
Immunohistochemical staining of paraffin-embedded Human colon tissue within the normal limits using anti-BSG mouse monoclonal antibody. (Heat-induced epitope retrieval by 10mM citric buffer, pH6.0, 100°C for 10min, [TA501212])



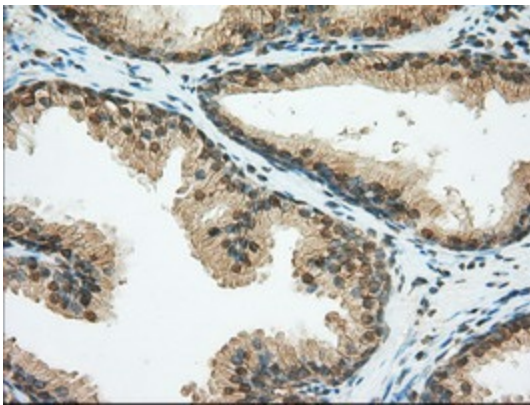
Immunohistochemical staining of paraffin-embedded Human liver tissue within the normal limits using anti-BSG mouse monoclonal antibody. (Heat-induced epitope retrieval by 10mM citric buffer, pH6.0, 100°C for 10min, [TA501212])



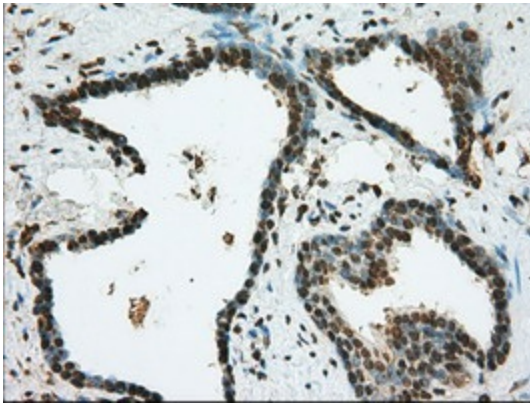
Immunohistochemical staining of paraffin-embedded Human lung tissue within the normal limits using anti-BSG mouse monoclonal antibody. (Heat-induced epitope retrieval by 10mM citric buffer, pH6.0, 100°C for 10min, [TA501212])



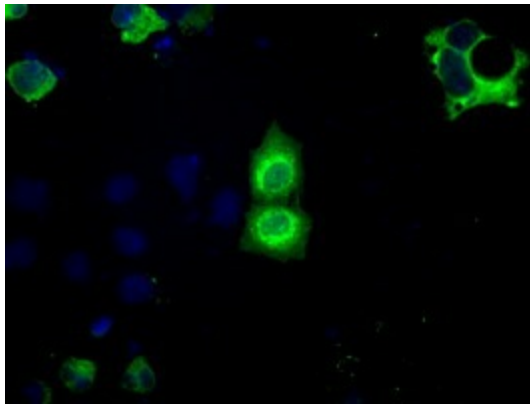
Immunohistochemical staining of paraffin-embedded Human pancreas tissue within the normal limits using anti-BSG mouse monoclonal antibody. (Heat-induced epitope retrieval by 10mM citric buffer, pH6.0, 100°C for 10min, [TA501212])



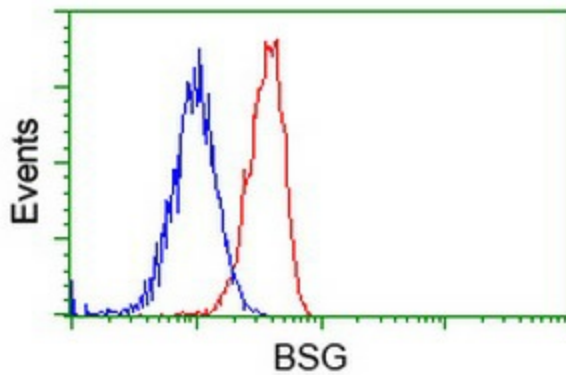
Immunohistochemical staining of paraffin-embedded Human prostate tissue within the normal limits using anti-BSG mouse monoclonal antibody. (Heat-induced epitope retrieval by 10mM citric buffer, pH6.0, 100°C for 10min, [TA501212])



Immunohistochemical staining of paraffin-embedded Carcinoma of Human prostate tissue using anti-BSG mouse monoclonal antibody. (Heat-induced epitope retrieval by 10mM citric buffer, pH6.0, 100°C for 10min, [TA501212])



Anti-BSG mouse monoclonal antibody ([TA501212]) immunofluorescent staining of COS7 cells transiently transfected by pCMV6-ENTRY BSG ([RC219464]).



Flow cytometric Analysis of Jurkat cells, using anti-BSG antibody ([TA501212]), (Red), compared to a nonspecific negative control antibody (TA50011), (Blue).