

## Product datasheet for **TA501211AM**

### Profilin 1 (PFN1) Mouse Monoclonal Antibody (Biotin conjugated) [Clone ID: OTI1D5]

#### Product data:

Product Type:	Primary Antibodies
Clone Name:	OTI1D5
Applications:	FC, IF, IHC, WB
Recommended Dilution:	WB 1:1000~2000, IHC 1:50, IF 1:100, FLOW 1:100
Reactivity:	Human, Dog, Rat, Monkey, Mouse
Host:	Mouse
Isotype:	IgG2a
Clonality:	Monoclonal
Immunogen:	Full length human recombinant protein of human PFN1 (NP_005013) produced in HEK293T cell.
Formulation:	PBS (pH 7.3) containing 1% BSA, 50% glycerol and 0.02% sodium azide.
Concentration:	0.5 mg/ml
Purification:	Purified from mouse ascites fluids or tissue culture supernatant by affinity chromatography (protein A/G)
Conjugation:	Biotin
Storage:	Store at -20°C as received.
Stability:	Stable for 12 months from date of receipt.
Predicted Protein Size:	14.9 kDa
Gene Name:	profilin 1
Database Link:	<a href="#">NP_005013</a> <a href="#">Entrez Gene 18643 Mouse</a> <a href="#">Entrez Gene 64303 Rat</a> <a href="#">Entrez Gene 607397 Dog</a> <a href="#">Entrez Gene 710753 Monkey</a> <a href="#">Entrez Gene 5216 Human</a> <a href="#">P07737</a>
Background:	The protein encoded by this gene is a ubiquitous actin monomer-binding protein belonging to the profilin family. It is thought to regulate actin polymerization in response to extracellular signals. Deletion of this gene is associated with Miller-Dieker syndrome.
Synonyms:	ALS18

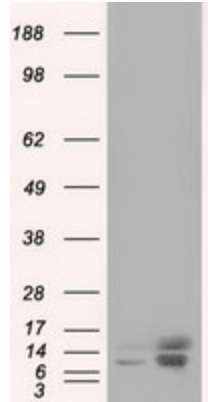


[View online »](#)

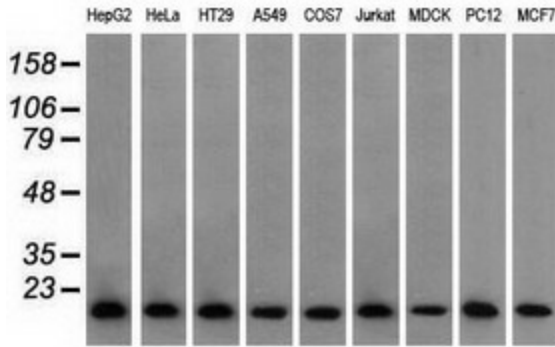
**Protein Families:** Druggable Genome, Stem cell - Pluripotency

**Protein Pathways:** Regulation of actin cytoskeleton

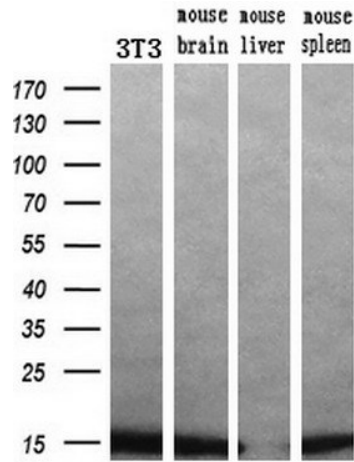
**Product images:**



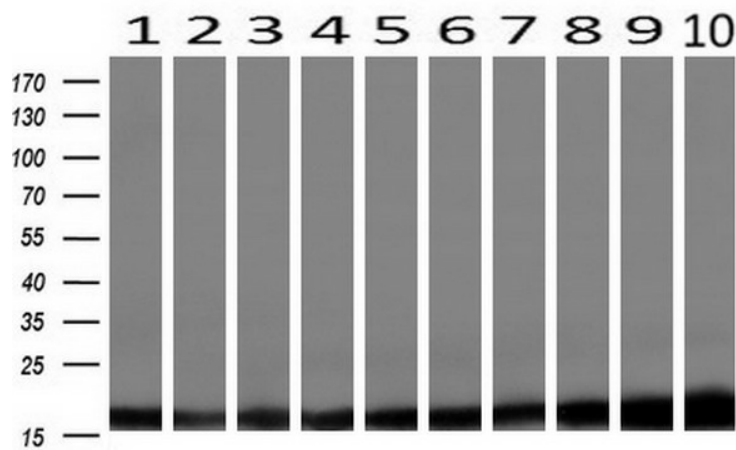
HEK293T cells were transfected with the pCMV6-ENTRY control (Cat# [PS100001], Left lane) or pCMV6-ENTRY PFN1 (Cat# [RC202338], Right lane) cDNA for 48 hrs and lysed. Equivalent amounts of cell lysates (5 ug per lane) were separated by SDS-PAGE and immunoblotted with anti-PFN1 (Cat# [TA501211]). Positive lysates [LY417584] (100ug) and [LC417584] (20ug) can be purchased separately from OriGene.



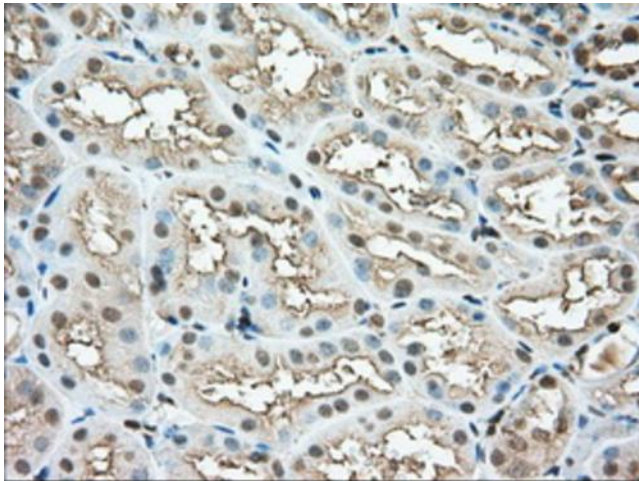
Western blot analysis of extracts (35ug) from 9 different cell lines by using anti-PFN1 monoclonal antibody.



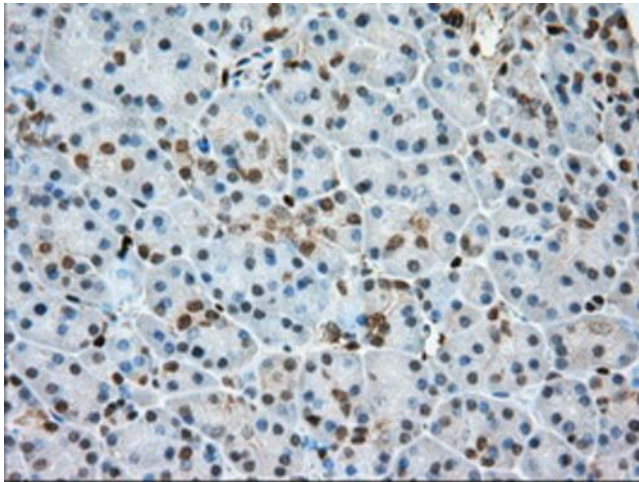
Western blot analysis of extracts (10ug) from a mouse cell line and 3 different mouse tissues by using anti-PFN1 monoclonal antibody (1:200).



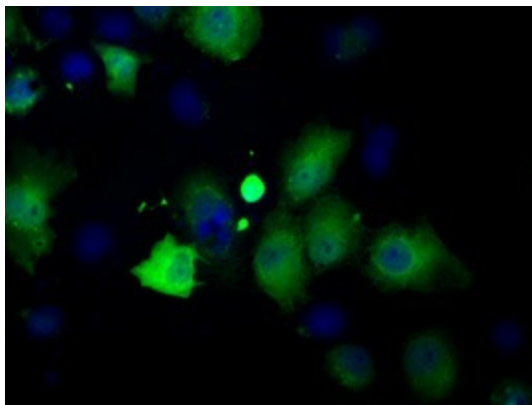
Western blot analysis of extracts (10ug) from 10 Human tissue by using anti-PFN1 monoclonal antibody at 1:200 (1: Testis; 2: Omentum; 3: Uterus; 4: Breast; 5: Brain; 6: Liver; 7: Ovary; 8: Thyroid gland; 9: colon; 10: spleen).



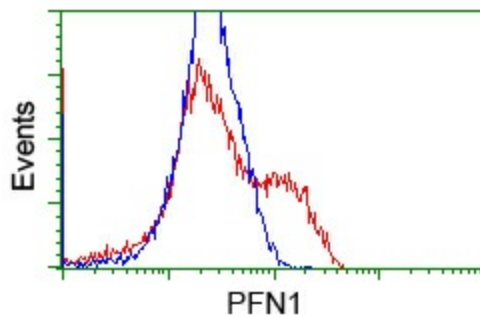
Immunohistochemical staining of paraffin-embedded Human Kidney tissue within the normal limits using anti-PFN1 mouse monoclonal antibody. (Heat-induced epitope retrieval by 10mM citric buffer, pH6.0, 100°C for 10min, [TA501211], Dilution 1:50)



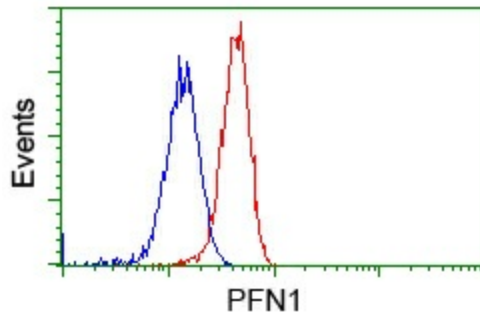
Immunohistochemical staining of paraffin-embedded Human pancreas tissue within the normal limits using anti-PFN1 mouse monoclonal antibody. (Heat-induced epitope retrieval by 10mM citric buffer, pH6.0, 100°C for 10min, [TA501211], Dilution 1:50)



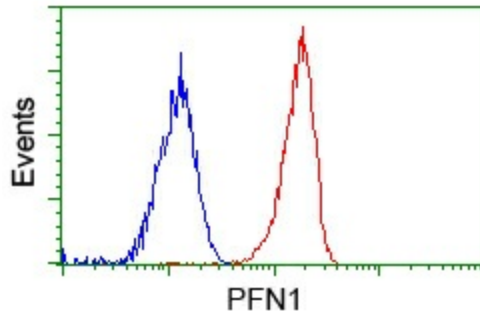
Anti-PFN1 mouse monoclonal antibody ([TA501211]) immunofluorescent staining of COS7 cells transiently transfected by pCMV6-ENTRY PFN1 ([RC202338]).



HEK293T cells transfected with either [RC202338] overexpress plasmid (Red) or empty vector control plasmid (Blue) were immunostained by anti-PFN1 antibody ([TA501211]), and then analyzed by flow cytometry.



Flow cytometric Analysis of HeLa cells, using anti-PFN1 antibody ([TA501211]), (Red), compared to a nonspecific negative control antibody (TA50011), (Blue).



Flow cytometric Analysis of Jurkat cells, using anti-PFN1 antibody ([TA501211]), (Red), compared to a nonspecific negative control antibody (TA50011), (Blue).