

Product datasheet for **TA501210S**

Hsp22 (HSPB8) Mouse Monoclonal Antibody [Clone ID: OTI1E3]

Product data:

Product Type:	Primary Antibodies
Clone Name:	OTI1E3
Applications:	FC, IF, WB
Recommended Dilution:	WB 1:500~2000, IF 1:100, FLOW 1:100
Reactivity:	Human, Rat, Mouse
Host:	Mouse
Isotype:	IgG2a
Clonality:	Monoclonal
Immunogen:	Full length human recombinant protein of human HSPB8(NP_055180) produced in HEK293T cell.
Formulation:	PBS (pH 7.3) containing 1% BSA, 50% glycerol and 0.02% sodium azide.
Concentration:	0.88 mg/ml
Purification:	Purified from mouse ascites fluids or tissue culture supernatant by affinity chromatography (protein A/G)
Conjugation:	Unconjugated
Storage:	Store at -20°C as received.
Stability:	Stable for 12 months from date of receipt.
Predicted Protein Size:	21.4 kDa
Gene Name:	heat shock protein family B (small) member 8
Database Link:	NP_055180 Entrez Gene 80888 Mouse Entrez Gene 113906 Rat Entrez Gene 26353 Human Q9UJY1



[View online »](#)

Background:

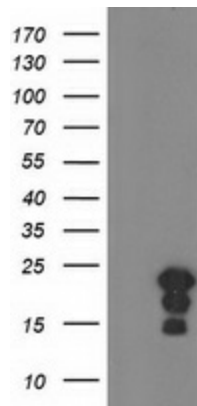
The protein encoded by this gene belongs to the superfamily of small heat-shock proteins containing a conservative alpha-crystallin domain at the C-terminal part of the molecule. The expression of this gene is induced by estrogen in estrogen receptor-positive breast cancer cells, and this protein also functions as a chaperone in association with Bag3, a stimulator of macroautophagy. Thus, this gene appears to be involved in regulation of cell proliferation, apoptosis, and carcinogenesis, and mutations in this gene have been associated with different neuromuscular diseases, including Charcot-Marie-Tooth disease. [provided by RefSeq]

Synonyms:

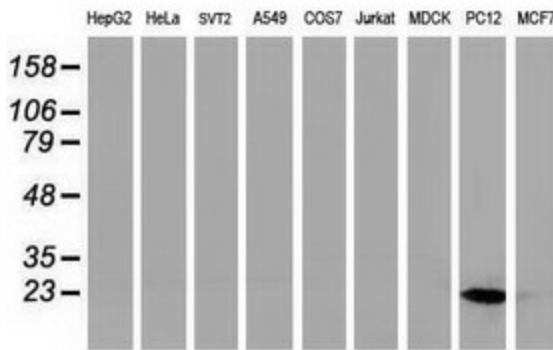
CMT2L; DHMN2; E2IG1; H11; HMN2; HMN2A; HSP22

Protein Families:

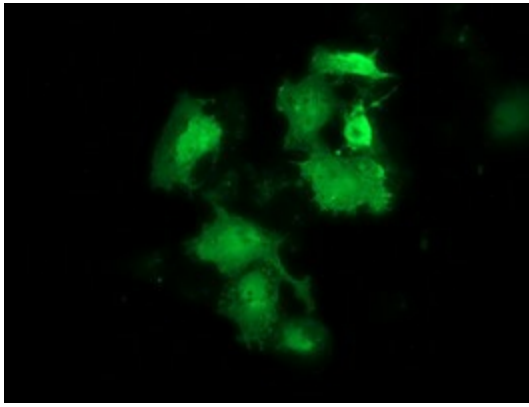
Druggable Genome, Protein Kinase

Product images:


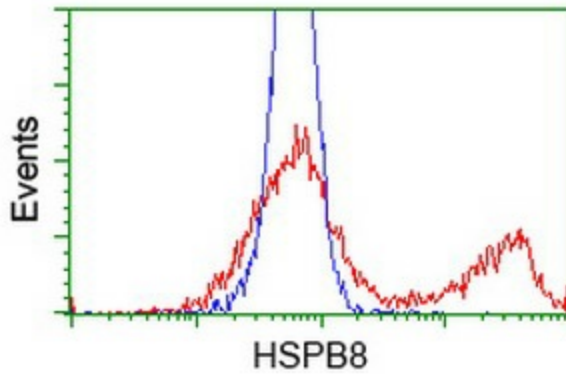
HEK293T cells were transfected with the pCMV6-ENTRY control (Cat# [PS100001], Left lane) or pCMV6-ENTRY HSPB8 (Cat# [RC201040], Right lane) cDNA for 48 hrs and lysed. Equivalent amounts of cell lysates (5 ug per lane) were separated by SDS-PAGE and immunoblotted with anti-HSPB8 (Cat# [TA501210]). Positive lysates [LY415329] (100ug) and [LC415329] (20ug) can be purchased separately from OriGene.



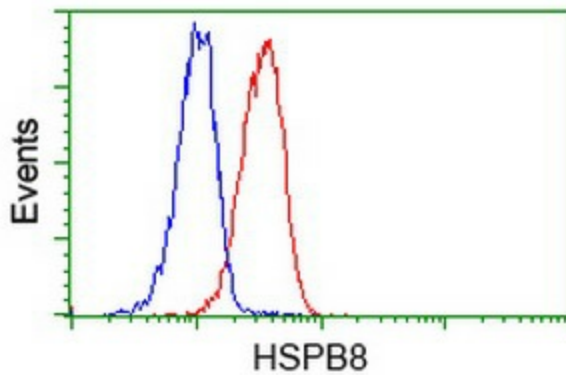
Western blot analysis of extracts (35ug) from 9 different cell lines by using anti-HSPB8 monoclonal antibody.



Anti-HSPB8 mouse monoclonal antibody ([TA501210]) immunofluorescent staining of COS7 cells transiently transfected by pCMV6-ENTRY HSPB8 ([RC201040]).



HEK293T cells transfected with either [RC201040] overexpress plasmid (Red) or empty vector control plasmid (Blue) were immunostained by anti-HSPB8 antibody ([TA501210]), and then analyzed by flow cytometry.



Flow cytometric Analysis of Jurkat cells, using anti-HSPB8 antibody ([TA501210]), (Red), compared to a nonspecific negative control antibody (TA50011), (Blue).