

Product datasheet for **TA501209AM**

EMG1 Mouse Monoclonal Antibody (Biotin conjugated) [Clone ID: OTI1B8]

Product data:

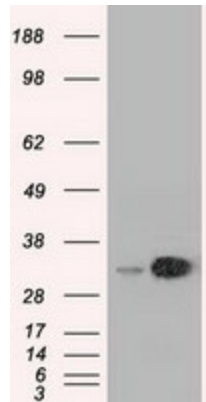
Product Type:	Primary Antibodies
Clone Name:	OTI1B8
Applications:	FC, IF, WB
Recommended Dilution:	WB 1:1000~2000, IF 1:100, FLOW 1:100
Reactivity:	Human, Dog, Monkey, Mouse, Rat
Host:	Mouse
Isotype:	IgG2b
Clonality:	Monoclonal
Immunogen:	Full length human recombinant protein of human EMG1(NP_006322) produced in HEK293T cell.
Formulation:	PBS (pH 7.3) containing 1% BSA, 50% glycerol and 0.02% sodium azide.
Concentration:	0.5 mg/ml
Purification:	Purified from mouse ascites fluids or tissue culture supernatant by affinity chromatography (protein A/G)
Conjugation:	Biotin
Storage:	Store at -20°C as received.
Stability:	Stable for 12 months from date of receipt.
Predicted Protein Size:	26.5 kDa
Gene Name:	EMG1 N1-specific pseudouridine methyltransferase
Database Link:	NP_006322 Entrez Gene 14791 Mouse Entrez Gene 312706 Rat Entrez Gene 477708 Dog Entrez Gene 722122 Monkey Entrez Gene 10436 Human Q92979
Background:	This gene encodes an essential, conserved eukaryotic protein involved in ribosome biogenesis. In yeast, the related protein is a component of the small subunit processome and is essential for biogenesis of the ribosomal 40S subunit. A mutation in this gene has been associated with Bowen-Conradi syndrome. COMPLETENESS: complete on the 3' end.



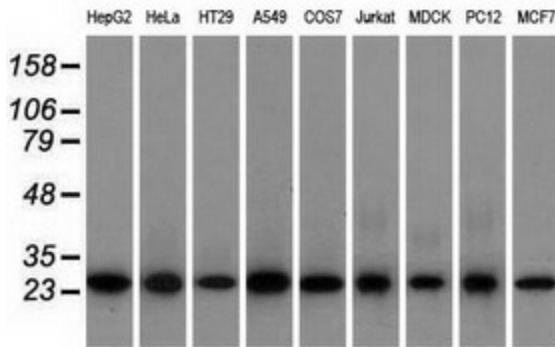
[View online »](#)

Synonyms: C2F; Grcc2f; NEP1

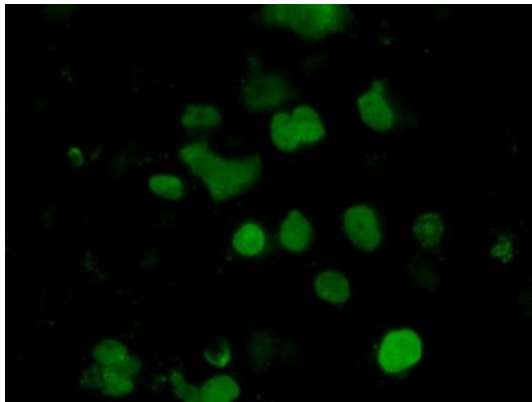
Product images:



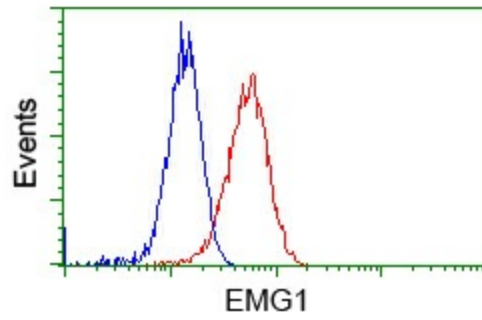
HEK293T cells were transfected with the pCMV6-ENTRY control (Cat# [PS100001], Left lane) or pCMV6-ENTRY EMG1 (Cat# [RC208885], Right lane) cDNA for 48 hrs and lysed. Equivalent amounts of cell lysates (5 ug per lane) were separated by SDS-PAGE and immunoblotted with anti-EMG1 (Cat# [TA501209]). Positive lysates [LY401906] (100ug) and [LC401906] (20ug) can be purchased separately from OriGene.



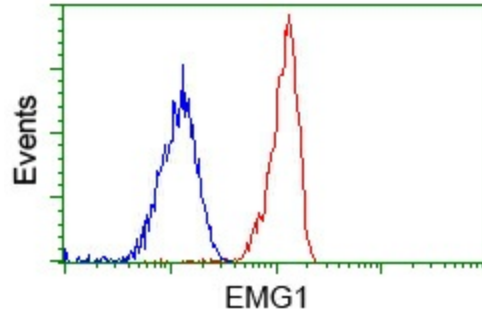
Western blot analysis of extracts (35ug) from 9 different cell lines by using anti-EMG1 monoclonal antibody.



Anti-EMG1 mouse monoclonal antibody ([TA501209]) immunofluorescent staining of COS7 cells transiently transfected by pCMV6-ENTRY EMG1 ([RC208885]).



Flow cytometric Analysis of HeLa cells, using anti-EMG1 antibody ([TA501209]), (Red), compared to a nonspecific negative control antibody (TA50011), (Blue).



Flow cytometric Analysis of Jurkat cells, using anti-EMG1 antibody ([TA501209]), (Red), compared to a nonspecific negative control antibody (TA50011), (Blue).