

## Product datasheet for **TA501208S**

### **cGKI (PRKG1) Mouse Monoclonal Antibody [Clone ID: OTI9A4]**

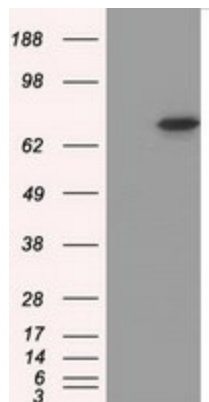
#### **Product data:**

<b>Product Type:</b>	Primary Antibodies
<b>Clone Name:</b>	OTI9A4
<b>Applications:</b>	FC, IF, WB
<b>Recommended Dilution:</b>	WB 1:2000, IF 1:100, FLOW 1:100
<b>Reactivity:</b>	Human, Mouse, Rat
<b>Host:</b>	Mouse
<b>Isotype:</b>	IgG2b
<b>Clonality:</b>	Monoclonal
<b>Immunogen:</b>	Full length human recombinant protein of human PRKG1 (NP_006249) produced in HEK293T cell.
<b>Formulation:</b>	PBS (pH 7.3) containing 1% BSA, 50% glycerol and 0.02% sodium azide.
<b>Concentration:</b>	1 mg/ml
<b>Purification:</b>	Purified from mouse ascites fluids or tissue culture supernatant by affinity chromatography (protein A/G)
<b>Conjugation:</b>	Unconjugated
<b>Storage:</b>	Store at -20°C as received.
<b>Stability:</b>	Stable for 12 months from date of receipt.
<b>Predicted Protein Size:</b>	77.6 kDa
<b>Gene Name:</b>	protein kinase cGMP-dependent 1
<b>Database Link:</b>	<a href="#">NP_006249</a> <a href="#">Entrez Gene 19091 Mouse</a> <a href="#">Entrez Gene 54286 Rat</a> <a href="#">Entrez Gene 5592 Human</a> <a href="#">Q13976</a>
<b>Synonyms:</b>	1; AAT8; cGK; cGK 1; cGK1; cGKI; cGKI-alpha; cGKI-BETA; PKG; PRKG1B; PRKGR1B
<b>Protein Families:</b>	Druggable Genome, Protein Kinase
<b>Protein Pathways:</b>	Gap junction, Long-term depression, Olfactory transduction, Vascular smooth muscle contraction

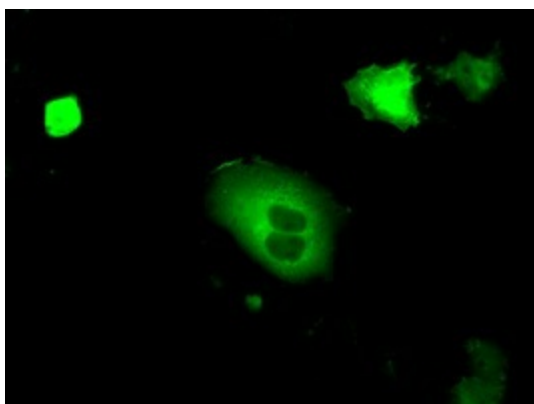


[View online »](#)

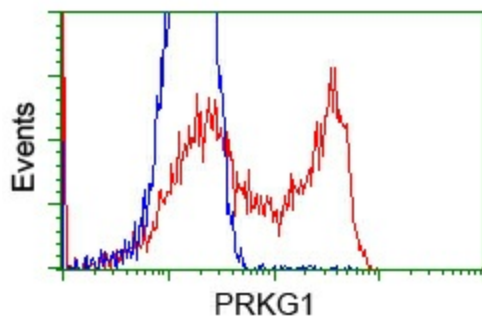
**Product images:**



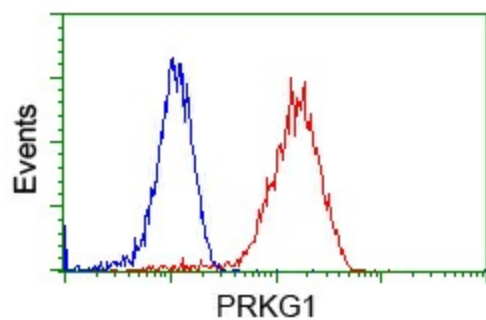
HEK293T cells were transfected with the pCMV6-ENTRY control (Left lane) or pCMV6-ENTRY PRKG1 ([RC220986], Right lane) cDNA for 48 hrs and lysed. Equivalent amounts of cell lysates (5 ug per lane) were separated by SDS-PAGE and immunoblotted with anti-PRKG1. Positive lysates [LY416766] (100ug) and [LC416766] (20ug) can be purchased separately from OriGene.



Anti-PRKG1 mouse monoclonal antibody ([TA501208]) immunofluorescent staining of COS7 cells transiently transfected by pCMV6-ENTRY PRKG1 ([RC220986]).



HEK293T cells transfected with either [RC220986] overexpress plasmid (Red) or empty vector control plasmid (Blue) were immunostained by anti-PRKG1 antibody ([TA501208]), and then analyzed by flow cytometry.



Flow cytometric Analysis of Jurkat cells, using anti-PRKG1 antibody ([TA501208]), (Red), compared to a nonspecific negative control antibody (TA50011), (Blue).