

Product datasheet for **TA501206**

PDE4A Mouse Monoclonal Antibody [Clone ID: OTI5C6]

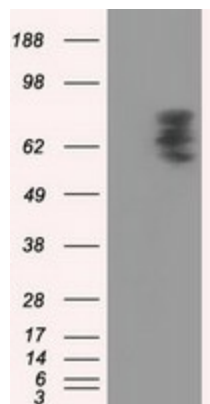
Product data:

Product Type:	Primary Antibodies
Clone Name:	OTI5C6
Applications:	FC, IF, IHC, WB
Recommended Dilution:	WB 1:2000, IHC 1:50, IF 1:100, FLOW 1:100
Reactivity:	Human, Rat
Host:	Mouse
Isotype:	IgG2b
Clonality:	Monoclonal
Immunogen:	Full length human recombinant protein of human PDE4A (NP_006193) produced in HEK293T cell.
Formulation:	PBS (pH 7.3) containing 1% BSA, 50% glycerol and 0.02% sodium azide.
Concentration:	0.96 mg/ml
Purification:	Purified from mouse ascites fluids or tissue culture supernatant by affinity chromatography (protein A/G)
Conjugation:	Unconjugated
Storage:	Store at -20°C as received.
Stability:	Stable for 12 months from date of receipt.
Predicted Protein Size:	72.0 kDa
Gene Name:	phosphodiesterase 4A
Database Link:	NP_006193 Entrez Gene 5141 Human P27815
Background:	Cyclic nucleotides are important second messengers that regulate and mediate a number of cellular responses to extracellular signals, such as hormones, light, and neurotransmitters. Cyclic nucleotide phosphodiesterases (PDEs) regulate the cellular concentrations of cyclic nucleotides and thereby play a role in signal transduction. PDE4A is a class IV cAMP-specific PDE

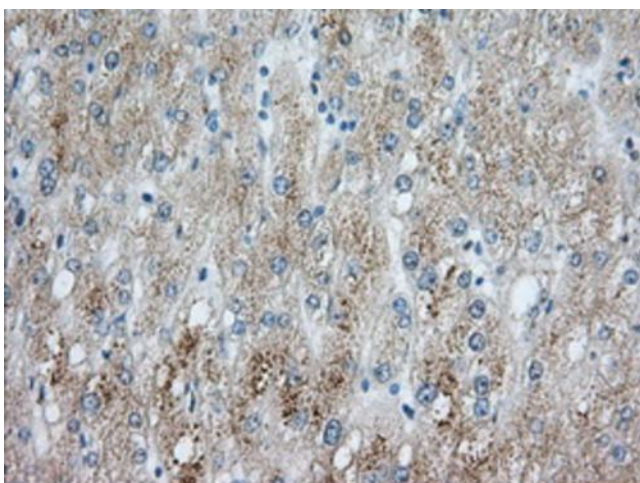


[View online »](#)

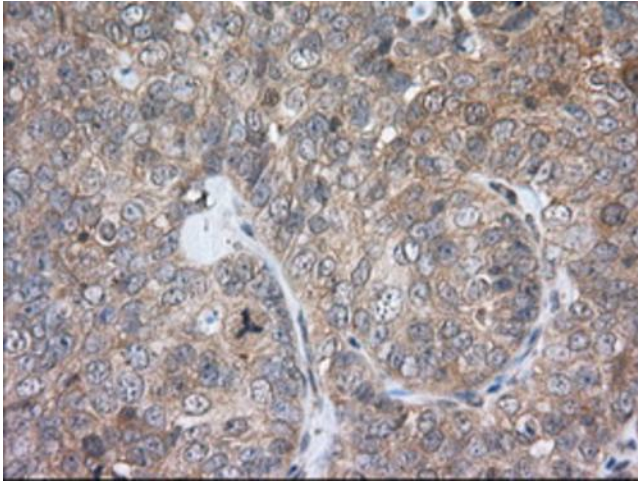
Synonyms: DPDE2; PDE4; PDE46
Protein Families: Druggable Genome
Protein Pathways: Progesterone-mediated oocyte maturation, Purine metabolism

Product images:

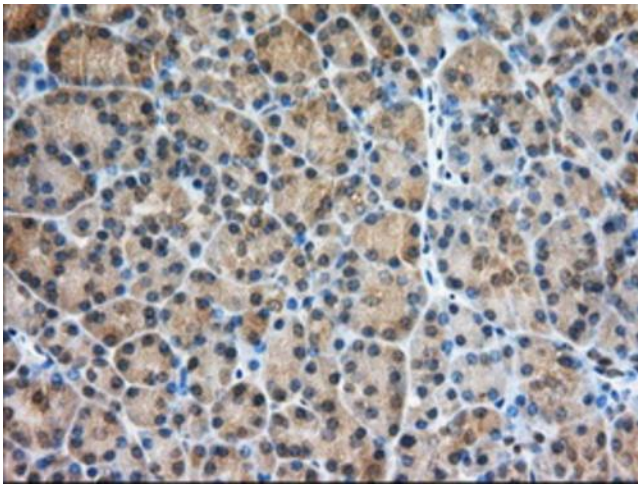
HEK293T cells were transfected with the pCMV6-ENTRY control (Left lane) or pCMV6-ENTRY PDE4A ([RC207765], Right lane) cDNA for 48 hrs and lysed. Equivalent amounts of cell lysates (5 ug per lane) were separated by SDS-PAGE and immunoblotted with anti-PDE4A.



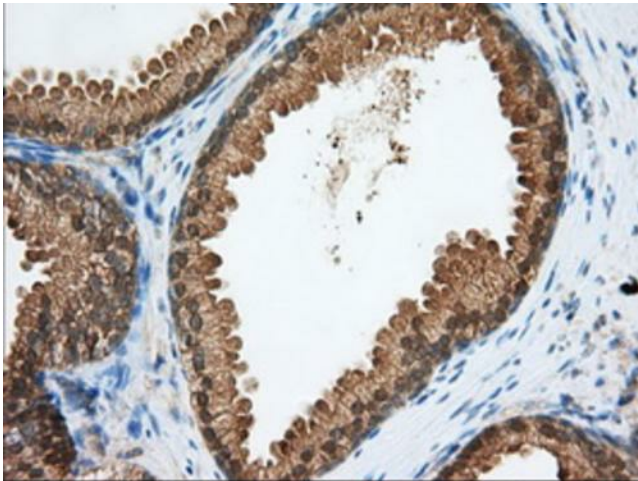
Immunohistochemical staining of paraffin-embedded Human liver tissue within the normal limits using anti-PDE4A mouse monoclonal antibody. Heat-induced epitope retrieval by EDTA solution buffer pH 8.0 at 120°C for 3 min.



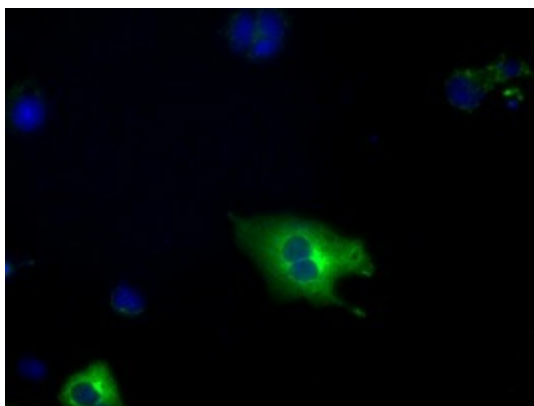
Immunohistochemical staining of paraffin-embedded Adenocarcinoma of Human ovary tissue using anti-PDE4A mouse monoclonal antibody. Heat-induced epitope retrieval by EDTA solution buffer pH 8.0 at 120°C for 3 min.



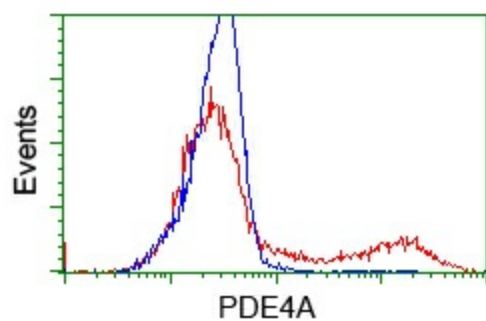
Immunohistochemical staining of paraffin-embedded Human pancreas tissue within the normal limits using anti-PDE4A mouse monoclonal antibody. Heat-induced epitope retrieval by EDTA solution buffer pH 8.0 at 120°C for 3 min.



Immunohistochemical staining of paraffin-embedded Human prostate tissue within the normal limits using anti-PDE4A mouse monoclonal antibody. Heat-induced epitope retrieval by EDTA solution buffer pH 8.0 at 120°C for 3 min.



Anti-PDE4A mouse monoclonal antibody (TA501206) immunofluorescent staining of COS7 cells transiently transfected by pCMV6-ENTRY PDE4A ([RC207765]).



HEK293T cells transfected with either [RC207765] overexpress plasmid (Red) or empty vector control plasmid (Blue) were immunostained by anti-PDE4A antibody (TA501206), and then analyzed by flow cytometry.