

## Product datasheet for **TA501188M**

### CD147 (BSG) Mouse Monoclonal Antibody [Clone ID: OTI9B10]

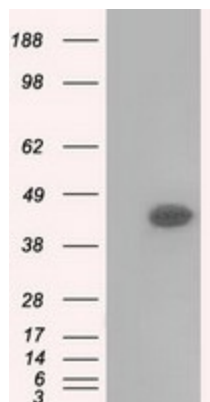
#### Product data:

Product Type:	Primary Antibodies
Clone Name:	OTI9B10
Applications:	FC, IF, WB
Recommended Dilution:	WB 1:2000, IF 1:100, FLOW 1:100
Reactivity:	Human
Host:	Mouse
Isotype:	IgG1
Clonality:	Monoclonal
Immunogen:	Full length human recombinant protein of human BSG(NP_001719) produced in HEK293T cell.
Formulation:	PBS (pH 7.3) containing 1% BSA, 50% glycerol and 0.02% sodium azide.
Concentration:	1 mg/ml
Purification:	Purified from mouse ascites fluids or tissue culture supernatant by affinity chromatography (protein A/G)
Conjugation:	Unconjugated
Storage:	Store at -20°C as received.
Stability:	Stable for 12 months from date of receipt.
Predicted Protein Size:	40.2 kDa
Gene Name:	basigin (Ok blood group)
Database Link:	<a href="#">NP_001719</a> <a href="#">Entrez Gene 682 Human</a> <a href="#">P35613</a>
Background:	The protein encoded by this gene is a plasma membrane protein that is important in spermatogenesis, embryo implantation, neural network formation, and tumor progression. The encoded protein is also a member of the immunoglobulin superfamily. Multiple transcript variants encoding different isoforms have been found for this gene.
Synonyms:	5F7; CD147; EMMPRIN; OK; TCSF

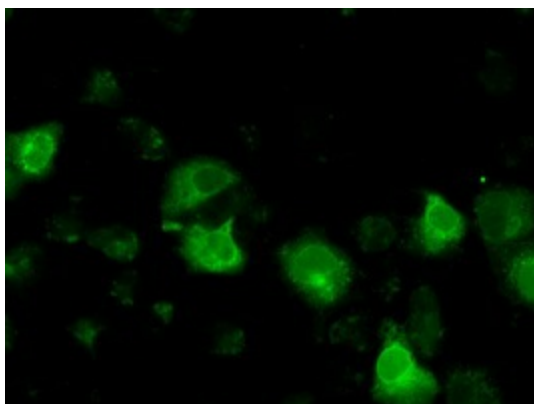
[View online »](#)

**Protein Families:** Druggable Genome, ES Cell Differentiation/IPS, Transmembrane

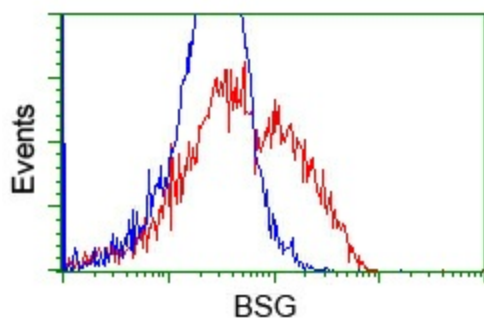
## Product images:



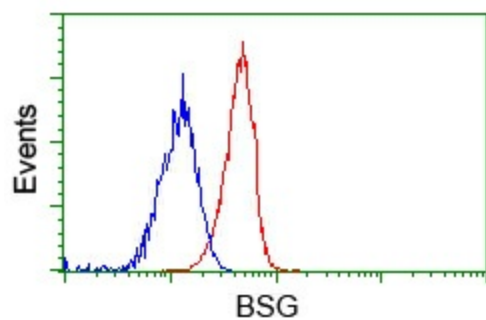
HEK293T cells were transfected with the pCMV6-ENTRY control (Left lane) or pCMV6-ENTRY BSG ([RC219464], Right lane) cDNA for 48 hrs and lysed. Equivalent amounts of cell lysates (5 ug per lane) were separated by SDS-PAGE and immunoblotted with anti-BSG. Positive lysates [LY419777] (100ug) and [LC419777] (20ug) can be purchased separately from OriGene.



Anti-BSG mouse monoclonal antibody ([TA501188]) immunofluorescent staining of COS7 cells transiently transfected by pCMV6-ENTRY BSG ([RC219464]).



HEK293T cells transfected with either [RC219464] overexpress plasmid (Red) or empty vector control plasmid (Blue) were immunostained by anti-BSG antibody ([TA501188]), and then analyzed by flow cytometry.



Flow cytometric Analysis of Jurkat cells, using anti-BSG antibody ([TA501188]), (Red), compared to a nonspecific negative control antibody (TA50011), (Blue).