

Product datasheet for **TA501186M**

UAP56 (DDX39B) Mouse Monoclonal Antibody [Clone ID: OTI2C5]

Product data:

Product Type:	Primary Antibodies
Clone Name:	OTI2C5
Applications:	IHC, WB
Recommended Dilution:	WB 1:500, IHC 1:50
Reactivity:	Human, Mouse, Rat
Host:	Mouse
Isotype:	IgG2b
Clonality:	Monoclonal
Immunogen:	Full length human recombinant protein of human BAT1(NP_542165) produced in HEK293T cell.
Formulation:	PBS (pH 7.3) containing 1% BSA, 50% glycerol and 0.02% sodium azide.
Concentration:	0.59 mg/ml
Purification:	Purified from mouse ascites fluids or tissue culture supernatant by affinity chromatography (protein A/G)
Conjugation:	Unconjugated
Storage:	Store at -20°C as received.
Stability:	Stable for 12 months from date of receipt.
Predicted Protein Size:	48.8 kDa
Gene Name:	DExD-box helicase 39B
Database Link:	NP_542165 Entrez Gene 53817 Mouse Entrez Gene 114612 Rat Entrez Gene 7919 Human Q13838


[View online »](#)

Background:

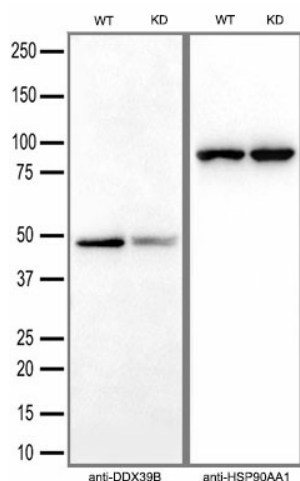
This gene encodes a member of the DEAD box family of RNA-dependent ATPases that mediate ATP hydrolysis during pre-mRNA splicing. The encoded protein is an essential splicing factor required for association of U2 small nuclear ribonucleoprotein with pre-mRNA, and also plays an important role in mRNA export from the nucleus to the cytoplasm. A cluster of genes, BAT1-BAT5, is localized in the vicinity of the genes for TNF alpha and TNF beta. These genes are all within the human major histocompatibility complex class III region. Mutations in this gene may be associated with rheumatoid arthritis. Alternatively spliced transcript variants encoding the same protein have been described.

Synonyms:

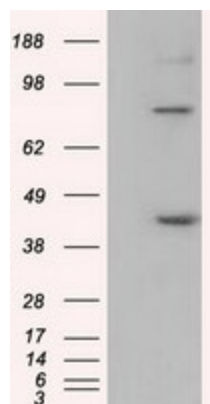
BAT1; D6S81E; UAP56

Protein Pathways:

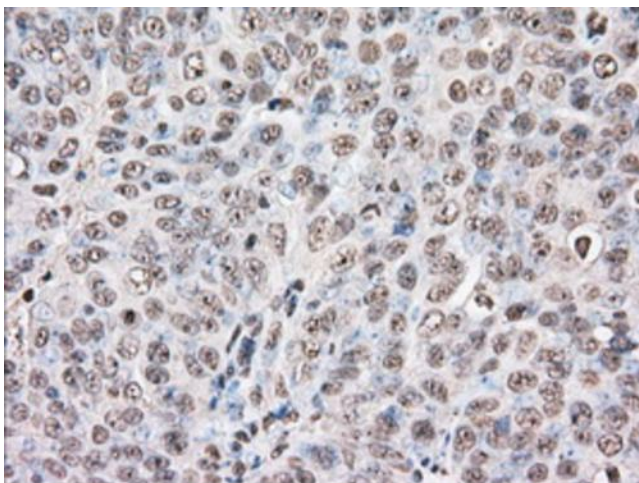
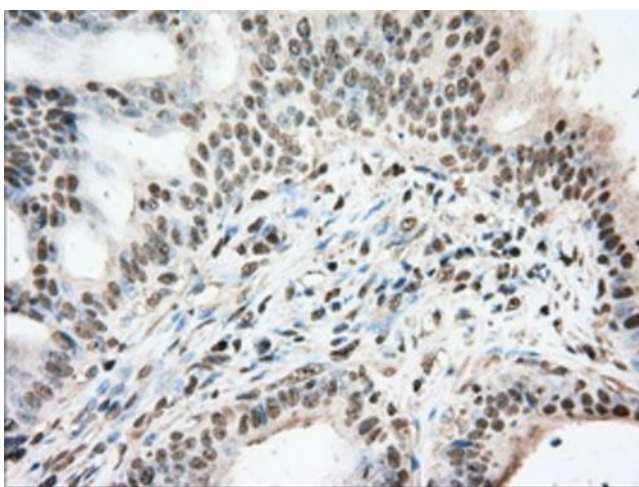
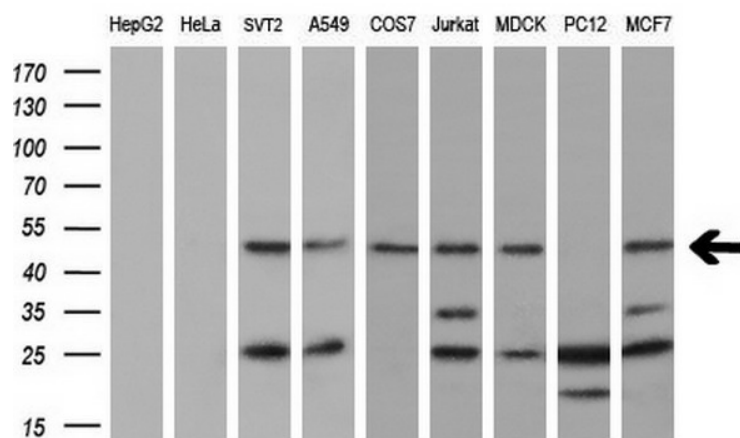
Spliceosome

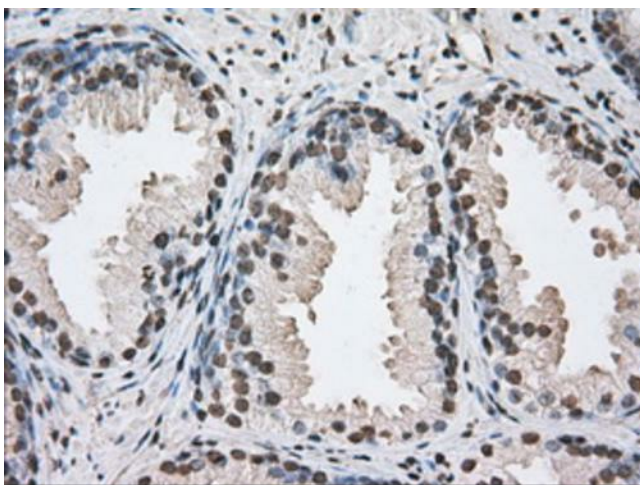
Product images:


Equivalent amounts of cell lysates (30 ug per lane) of wild-type HAP-1 cells (WT) and DDX39B-Knockdown HAP-1 cells (KD) were separated by SDS-PAGE and immunoblotted with anti-DDX39B monoclonal antibody [TA501186] (1:2500). Then the blotted membrane was stripped and reprobed with anti-HSP90AA1 antibody as a loading control.



HEK293T cells were transfected with the pCMV6-ENTRY control (Cat# [PS100001], Left lane) or pCMV6-ENTRY BAT1 (Cat# [RC201847], Right lane) cDNA for 48 hrs and lysed. Equivalent amounts of cell lysates (5 ug per lane) were separated by SDS-PAGE and immunoblotted with anti-BAT1 (Cat# [TA501186]). Positive lysates [LY409144] (100ug) and [LC409144] (20ug) can be purchased separately from OriGene.





Immunohistochemical staining of paraffin-embedded Human prostate tissue within the normal limits using anti-BAT1 mouse monoclonal antibody. Heat-induced epitope retrieval by EDTA solution buffer pH 8.0 at 120°C for 3 min.