

Product datasheet for **TA501176S**

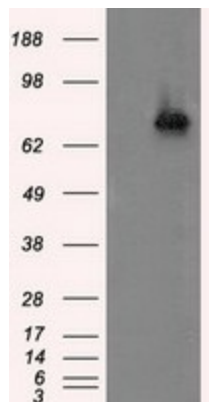
ACSBG1 Mouse Monoclonal Antibody [Clone ID: OTI2B6]

Product data:

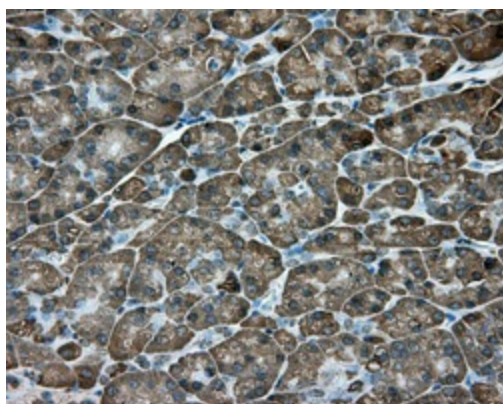
Product Type:	Primary Antibodies
Clone Name:	OTI2B6
Applications:	IHC, WB
Recommended Dilution:	WB 1:2000, IHC 1:50
Reactivity:	Human, Mouse, Rat
Host:	Mouse
Isotype:	IgG1
Clonality:	Monoclonal
Immunogen:	Full length human recombinant protein of human ACSBG1(NP_055977) produced in HEK293T cell.
Formulation:	PBS (pH 7.3) containing 1% BSA, 50% glycerol and 0.02% sodium azide.
Concentration:	0.65 mg/ml
Purification:	Purified from mouse ascites fluids or tissue culture supernatant by affinity chromatography (protein A/G)
Conjugation:	Unconjugated
Storage:	Store at -20°C as received.
Stability:	Stable for 12 months from date of receipt.
Predicted Protein Size:	81.1 kDa
Gene Name:	acyl-CoA synthetase bubbligum family member 1
Database Link:	NP_055977 Entrez Gene 94180 Mouse Entrez Gene 171410 Rat Entrez Gene 23205 Human Q96GR2
Background:	The protein encoded by this gene possesses long-chain acyl-CoA synthetase activity. It is thought to play a central role in brain very long-chain fatty acids metabolism and myelinogenesis. [provided by RefSeq]. COMPLETENESS: complete on the 3' end.
Synonyms:	BG; BG1; BGM; GR-LACS; LPD



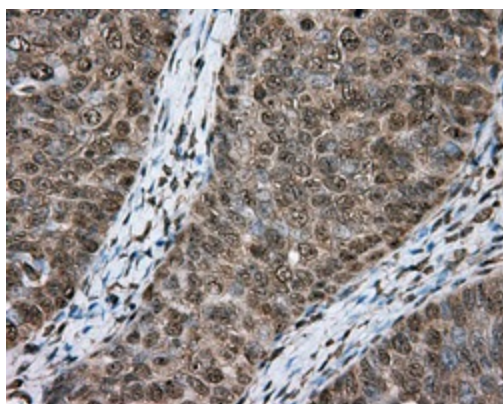
[View online »](#)

Product images:


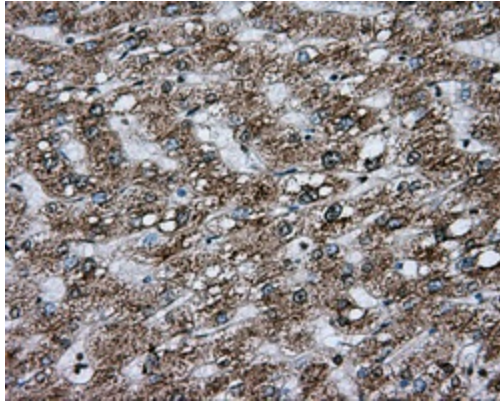
HEK293T cells were transfected with the pCMV6-ENTRY control (Cat# [PS100001], Left lane) or pCMV6-ENTRY ACSBG1 (Cat# [RC203219], Right lane) cDNA for 48 hrs and lysed. Equivalent amounts of cell lysates (5 ug per lane) were separated by SDS-PAGE and immunoblotted with anti-ACSBG1 (Cat# [TA501176]). Positive lysates [LY414754] (100ug) and [LC414754] (20ug) can be purchased separately from OriGene.



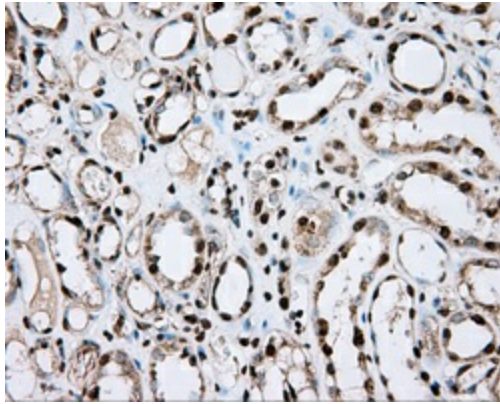
Immunohistochemical staining of paraffin-embedded pancreas tissue within the normal limits using anti-ACSBG1 mouse monoclonal antibody. (Heat-induced epitope retrieval by 10mM citric buffer, pH6.0, 100°C for 10min, [TA501176], Dilution 1:50)



Immunohistochemical staining of paraffin-embedded Adenocarcinoma of ovary tissue N93ing anti-ACSBG1 mouse monoclonal antibody. (Heat-induced epitope retrieval by 10mM citric buffer, pH6.0, 100°C for 10min, [TA501176], Dilution 1:50)



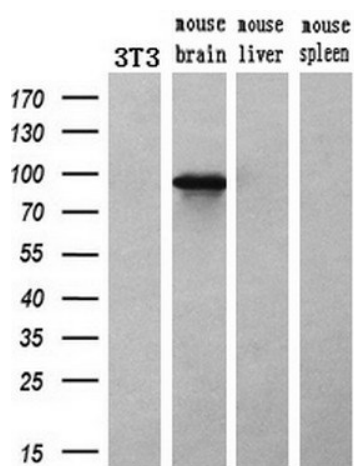
Immunohistochemical staining of paraffin-embedded liver tissue within the normal limits using anti-ACSBG1 mouse monoclonal antibody. (Heat-induced epitope retrieval by 10mM citric buffer, pH6.0, 100°C for 10min, [TA501176], Dilution 1:50)



Immunohistochemical staining of paraffin-embedded Kidney tissue within the normal limits using anti-ACSBG1 mouse monoclonal antibody. (Heat-induced epitope retrieval by 10mM citric buffer, pH6.0, 100°C for 10min, [TA501176], Dilution 1:50)



Immunohistochemical staining of paraffin-embedded colon tissue within the normal limits using anti-ACSBG1 mouse monoclonal antibody. (Heat-induced epitope retrieval by 10mM citric buffer, pH6.0, 100°C for 10min, [TA501176], Dilution 1:50)



Western blot analysis of extracts (10ug) from a mouse cell line and 3 different mouse tissues by using anti-ACSBG1 monoclonal antibody (1:200).