

## Product datasheet for **TA501159**

### **TUBA8 Mouse Monoclonal Antibody [Clone ID: OTI3G2]**

#### **Product data:**

|                         |   |
|-------------------------|---|
| Product Type:           | Primary Antibodies  |
| Clone Name:             | OTI3G2  |
| Applications:           | WB  |
| Recommended Dilution:   | WB 1:2000   |
| Reactivity:             | Human, Mouse, Rat   |
| Host:                   | Mouse   |
| Isotype:                | IgG2a   |
| Clonality:              | Monoclonal  |
| Immunogen:              | Full length human recombinant protein of human TUBA8(NP_061816) produced in HEK293T cell.   |
| Formulation:            | PBS (pH 7.3) containing 1% BSA, 50% glycerol and 0.02% sodium azide.  |
| Concentration:          | 0.78 mg/ml  |
| Purification:           | Purified from mouse ascites fluids or tissue culture supernatant by affinity chromatography (protein A/G)   |
| Conjugation:            | Unconjugated  |
| Storage:                | Store at -20°C as received.   |
| Stability:              | Stable for 12 months from date of receipt.  |
| Predicted Protein Size: | 49.9 kDa  |
| Gene Name:              | tubulin alpha 8   |
| Database Link:          | <a href="#">NP_061816</a><br><a href="#">Entrez Gene 500377 Rat</a> <a href="#">Entrez Gene 51807 Human</a><br><a href="#">Q9NY65</a>   |
| Background:             | This gene encodes a member of the alpha tubulin protein family. Alpha tubulins are one of two core protein families (alpha and beta tubulins) that heterodimerize and assemble to form microtubules. Mutations in this gene are associated with polymicrogyria and optic nerve hypoplasia. Alternate splicing results in multiple transcript variants. [provided by RefSeq] |
| Synonyms:               | TUBAL2  |

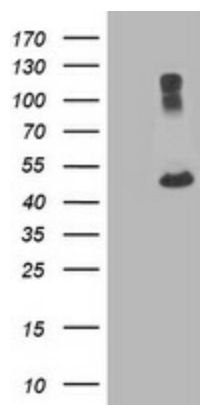


[View online »](#)

Protein Families: Druggable Genome

Protein Pathways: Gap junction, Pathogenic Escherichia coli infection

### Product images:



HEK293T cells were transfected with the pCMV6-ENTRY control (Left lane) or pCMV6-ENTRY TUBA8 ([RC211175], Right lane) cDNA for 48 hrs and lysed. Equivalent amounts of cell lysates (5 ug per lane) were separated by SDS-PAGE and immunoblotted with anti-TUBA8. Positive lysates [LY412867] (100ug) and [LC412867] (20ug) can be purchased separately from OriGene.