

## Product datasheet for **TA501151M**

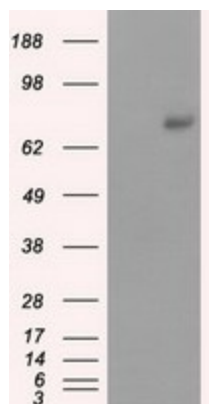
### cGKI (PRKG1) Mouse Monoclonal Antibody [Clone ID: OTI9G4]

#### Product data:

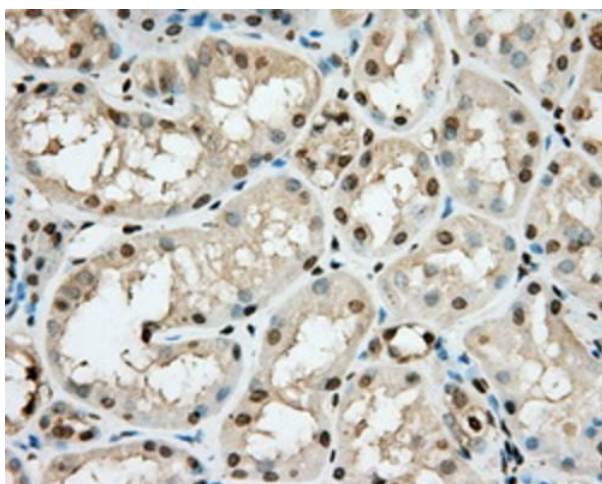
Product Type:	Primary Antibodies
Clone Name:	OTI9G4
Applications:	IF, IHC, WB
Recommended Dilution:	WB 1:3000, IHC 1:50, IF 1:100
Reactivity:	Human, Mouse, Rat
Host:	Mouse
Isotype:	IgG1
Clonality:	Monoclonal
Immunogen:	Full length human recombinant protein of human PRKG1 (NP_006249) produced in HEK293T cell.
Formulation:	PBS (pH 7.3) containing 1% BSA, 50% glycerol and 0.02% sodium azide.
Concentration:	0.83 mg/ml
Purification:	Purified from mouse ascites fluids or tissue culture supernatant by affinity chromatography (protein A/G)
Conjugation:	Unconjugated
Storage:	Store at -20°C as received.
Stability:	Stable for 12 months from date of receipt.
Predicted Protein Size:	77.6 kDa
Gene Name:	protein kinase cGMP-dependent 1
Database Link:	<a href="#">NP_006249</a> <a href="#">Entrez Gene 19091 Mouse</a> <a href="#">Entrez Gene 54286 Rat</a> <a href="#">Entrez Gene 5592 Human</a> <a href="#">Q13976</a>
Synonyms:	1; AAT8; cGK; cGK 1; cGK1; cGKI; cGKI-alpha; cGKI-BETA; PKG; PRKG1B; PRKGR1B
Protein Families:	Druggable Genome, Protein Kinase
Protein Pathways:	Gap junction, Long-term depression, Olfactory transduction, Vascular smooth muscle contraction


[View online »](#)

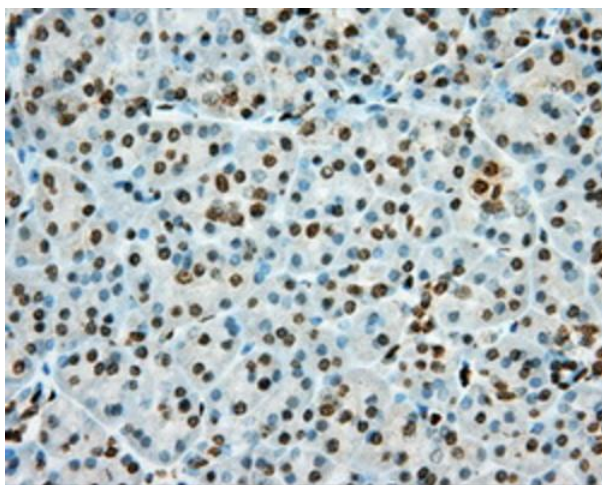
## Product images:



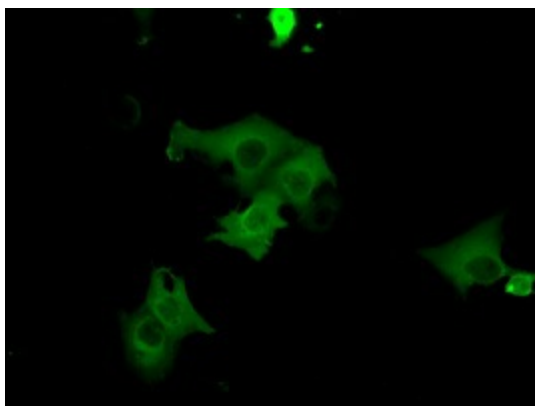
HEK293T cells were transfected with the pCMV6-ENTRY control (Cat# [PS100001], Left lane) or pCMV6-ENTRY PRKG1 (Cat# [RC220986], Right lane) cDNA for 48 hrs and lysed. Equivalent amounts of cell lysates (5 ug per lane) were separated by SDS-PAGE and immunoblotted with anti-PRKG1 (Cat# [TA501151]). Positive lysates [LY416766] (100ug) and [LC416766] (20ug) can be purchased separately from OriGene.



Immunohistochemical staining of paraffin-embedded Kidney tissue within the normal limits using anti-PRKG1 mouse monoclonal antibody. Heat-induced epitope retrieval by EDTA solution buffer pH 8.0 at 120°C for 3 min.



Immunohistochemical staining of paraffin-embedded pancreas tissue within the normal limits using anti-PRKG1 mouse monoclonal antibody. Heat-induced epitope retrieval by EDTA solution buffer pH 8.0 at 120°C for 3 min.



Anti-PRKG1 mouse monoclonal antibody ([TA501151]) immunofluorescent staining of COS7 cells transiently transfected by pCMV6-ENTRY PRKG1 ([RC220986]).