

Product datasheet for **TA501151**

cGKI (PRKG1) Mouse Monoclonal Antibody [Clone ID: OTI9G4]

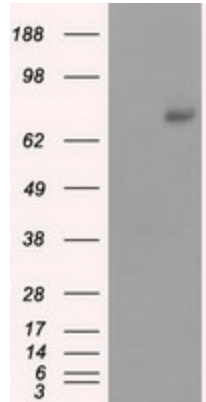
Product data:

| | |
|--------------------------------|---|
| Product Type: | Primary Antibodies |
| Clone Name: | OTI9G4 |
| Applications: | IF, IHC, WB |
| Recommended Dilution: | WB 1:3000, IHC 1:50, IF 1:100 |
| Reactivity: | Human, Mouse, Rat |
| Host: | Mouse |
| Isotype: | IgG1 |
| Clonality: | Monoclonal |
| Immunogen: | Full length human recombinant protein of human PRKG1 (NP_006249) produced in HEK293T cell. |
| Formulation: | PBS (pH 7.3) containing 1% BSA, 50% glycerol and 0.02% sodium azide. |
| Concentration: | 0.83 mg/ml |
| Purification: | Purified from mouse ascites fluids or tissue culture supernatant by affinity chromatography (protein A/G) |
| Conjugation: | Unconjugated |
| Storage: | Store at -20°C as received. |
| Stability: | Stable for 12 months from date of receipt. |
| Predicted Protein Size: | 77.6 kDa |
| Gene Name: | protein kinase cGMP-dependent 1 |
| Database Link: | NP_006249 Entrez Gene 19091 Mouse Entrez Gene 54286 Rat Entrez Gene 5592 Human Q13976 |
| Synonyms: | 1; AAT8; cGK; cGK 1; cGK1; cGKI; cGKI-alpha; cGKI-BETA; PKG; PRKG1B; PRKGR1B |
| Protein Families: | Druggable Genome, Protein Kinase |
| Protein Pathways: | Gap junction, Long-term depression, Olfactory transduction, Vascular smooth muscle contraction |

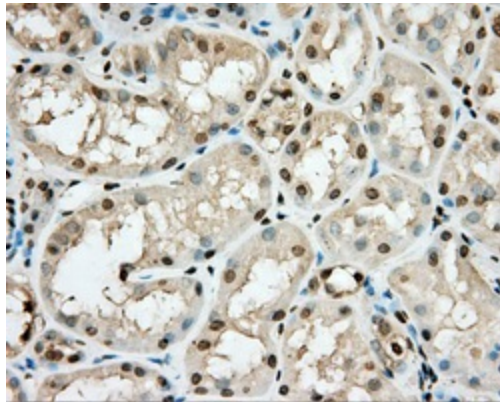


[View online »](#)

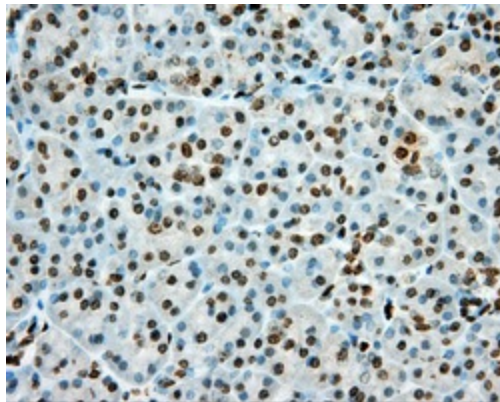
Product images:



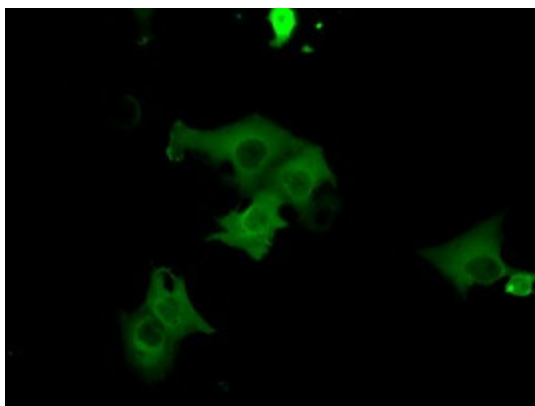
HEK293T cells were transfected with the pCMV6-ENTRY control (Cat# [PS100001], Left lane) or pCMV6-ENTRY PRKG1 (Cat# [RC220986], Right lane) cDNA for 48 hrs and lysed. Equivalent amounts of cell lysates (5 ug per lane) were separated by SDS-PAGE and immunoblotted with anti-PRKG1(Cat# TA501151). Positive lysates [LY416766] (100ug) and [LC416766] (20ug) can be purchased separately from OriGene.



Immunohistochemical staining of paraffin-embedded Kidney tissue within the normal limits using anti-PRKG1 mouse monoclonal antibody. (Heat-induced epitope retrieval by 10mM citric buffer, pH6.0, 100°C for 10min, TA501151, Dilution 1:50)



Immunohistochemical staining of paraffin-embedded pancreas tissue within the normal limits using anti-PRKG1 mouse monoclonal antibody. (Heat-induced epitope retrieval by 10mM citric buffer, pH6.0, 100°C for 10min, TA501151, Dilution 1:50)



Anti-PRKG1 mouse monoclonal antibody (TA501151) immunofluorescent staining of COS7 cells transiently transfected by pCMV6-ENTRY PRKG1 ([RC220986]).